

LOC/DME I-MED 111.1 Chan 48	APP CRS 093°	Rwy Idg 12246 TDZE 672 Apt Elev 680
---	------------------------	--

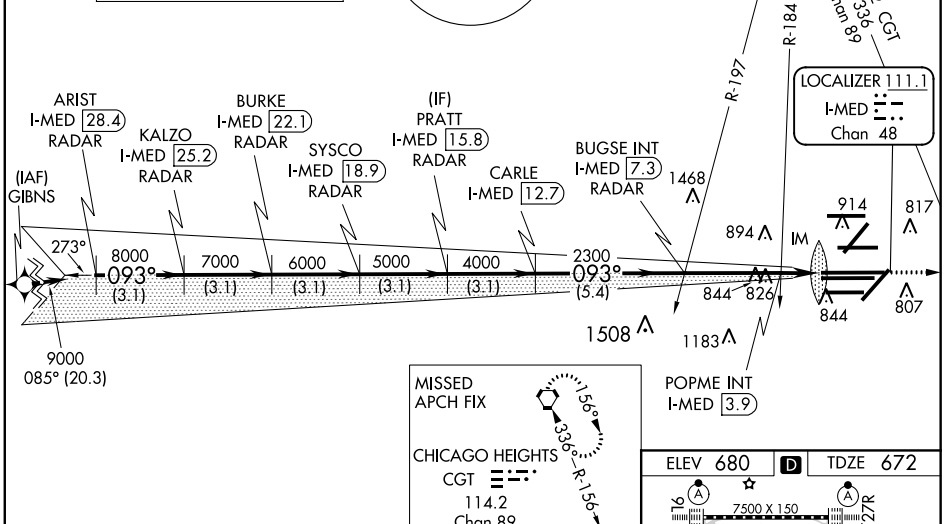
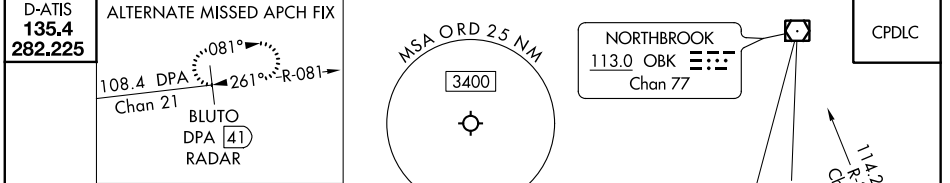
ILS or LOC RWY 10L

CHICAGO O'HARE INTL (ORD)

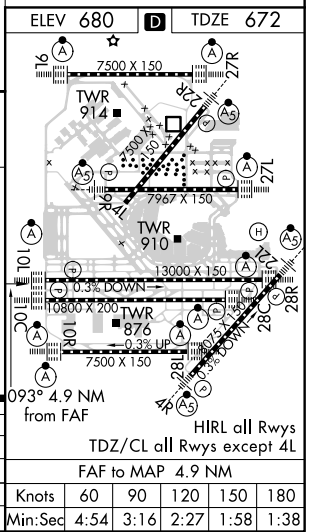
From GIBNS: RNAV-1 GPS required.
 RNAV 1-GPS or RADAR required for procedure entry. DME or RADAR required.
 Simultaneous approach authorized.

ALSF-2
 MISSED APPROACH: Climb to 4000 on heading 093° and CGT VORTAC R-336 to CGT VORTAC and hold.

CHICAGO APP CON 119.0 292.125	O'HARE TOWERS 128.15 348.0 (Rwy 9L/27R) 120.75 121.15 126.9 132.7 348.0 (CENTER)	GND CON (TWR CENTER) 124.125 (TWR NORTH) 118.05 (TWR SOUTH) 226.675 (ALL TWRs)	121.75 (OBND) 121.9 (IBND)	CLNC DEL 121.6
---	--	--	---	--------------------------



ARIST I-MED [28.4] RADAR	KALZO I-MED [25.2] RADAR	BURKE I-MED [22.1] RADAR	PRATT I-MED [15.8] RADAR	SYSCO I-MED [18.9] RADAR	BUGSE INT I-MED [7.3]	CARLE I-MED [12.7]	POPME INT I-MED [3.9]	I-MED [2.4]
3.1 NM	3.1 NM	3.1 NM	3.1 NM	3.1 NM	5.4 NM	3.4 NM	1.4 NM	0.1 NM
CATEGORY A				CATEGORY B		CATEGORY C		CATEGORY D
S-ILS 10L				872/18		200 (200-½)		
S-LOC 10L				1200/24 528 (600-½)		1200/55 528 (600-1)		
POPME FIX MINIMUMS (DUAL VOR RECEIVERS OR DME REQUIRED)								
S-LOC 10L				1080/24 408 (400-½)		1080/40 408 (400-¾)		



EC-3, 15 AUG 2019 to 12 SEP 2019

EC-3, 15 AUG 2019 to 12 SEP 2019