

LOC/DME I-TSL <b>111.1</b> Chan <b>48</b>	APP CRS <b>273°</b>	Rwy ldg <b>13000</b> TDZE <b>651</b> Apt Elev <b>680</b>
---	------------------------	--

# ILS RWY 28R (SA CAT I)

CHICAGO O'HARE INTL (ORD)

From VOGLR: RNAV 1-GPS required.  
Aircraft not GPS equipped - RADAR required for procedure entry.  
DME or RADAR required.

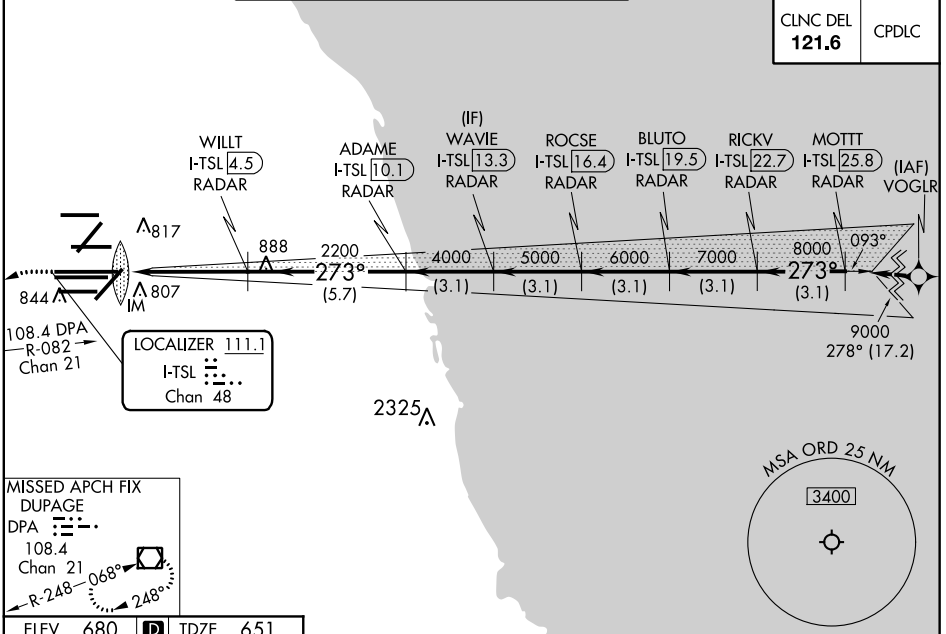
ALSF-2

MISSED APPROACH: Climb to 1100 then climbing  
left turn to 4000 on heading 215° and DPA  
VOR/DME R-082 to DPA VOR/DME and hold.

Simultaneous approach authorized. Requires specific OPSPEC,  
MSPEC, or LOA approval and use of HUD to DH.

D-ATIS <b>135.4</b> <b>282.225</b>	CHICAGO APP CON <b>119.0 292.125</b>	O'HARE TOWERS <b>128.15 348.0</b> (Rwy 9L/27R) <b>133.0 348.0</b> (10R/28L) <b>120.75 121.15 126.9 132.7 348.0</b> (CENTER)	GND CON (TWR NORTH) <b>124.125</b> (TWR SOUTH) <b>118.05</b> (ALL TWSRS) <b>226.675</b>	(TWR CENTER) <b>121.75</b> (OBND) (IBND) <b>121.9</b>
--	---	---	--	--

CLNC DEL <b>121.6</b>	CPDLC
--------------------------	-------

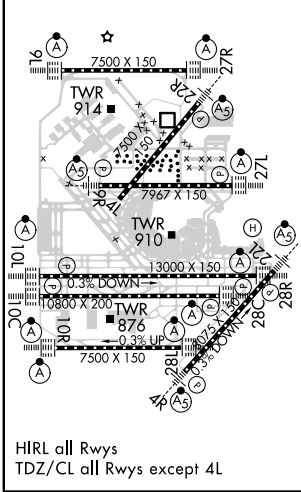


EC-3, 15 AUG 2019 to 12 SEP 2019

EC-3, 15 AUG 2019 to 12 SEP 2019

MISSED APCH FIX  
DUPAGE  
DPA 108.4  
Chan 21  
R-248 068°  
248°

ELEV <b>680</b>	<b>D</b>	TDZE <b>651</b>
-----------------	----------	-----------------



1100	4000	DPA	VGSI and ILS glidepath not coincident (VGSI Angle 3.00/TCH 70).																					
↑	hdg 215°	R-082																						
<table border="1"> <tr> <td>WAVIE I-TSL 13.3 RADAR</td> <td>BLUTO I-TSL 19.5 RADAR</td> <td>MOTTT I-TSL 25.8 RADAR</td> </tr> <tr> <td>WILLT I-TSL 4.5 RADAR</td> <td>ADAME I-TSL 10.1 RADAR</td> <td>RICKV I-TSL 22.7 RADAR</td> </tr> <tr> <td>I-TSL DME ANTENNA</td> <td>ROCSE I-TSL 16.4 RADAR</td> <td></td> </tr> </table>				WAVIE I-TSL 13.3 RADAR	BLUTO I-TSL 19.5 RADAR	MOTTT I-TSL 25.8 RADAR	WILLT I-TSL 4.5 RADAR	ADAME I-TSL 10.1 RADAR	RICKV I-TSL 22.7 RADAR	I-TSL DME ANTENNA	ROCSE I-TSL 16.4 RADAR													
WAVIE I-TSL 13.3 RADAR	BLUTO I-TSL 19.5 RADAR	MOTTT I-TSL 25.8 RADAR																						
WILLT I-TSL 4.5 RADAR	ADAME I-TSL 10.1 RADAR	RICKV I-TSL 22.7 RADAR																						
I-TSL DME ANTENNA	ROCSE I-TSL 16.4 RADAR																							
<table border="1"> <tr> <td>2200</td> <td>4000</td> <td>5000</td> <td>6000</td> <td>7000</td> <td>8000</td> <td>9000</td> </tr> <tr> <td>IM</td> <td>3.1 NM</td> <td>3.1 NM</td> <td>3.1 NM</td> <td>3.1 NM</td> <td>3.1 NM</td> <td>3.1 NM</td> </tr> <tr> <td>1030'</td> <td>4.7 NM</td> <td>5.7 NM</td> <td></td> <td></td> <td></td> <td></td> </tr> </table>				2200	4000	5000	6000	7000	8000	9000	IM	3.1 NM	3.1 NM	3.1 NM	3.1 NM	3.1 NM	3.1 NM	1030'	4.7 NM	5.7 NM				
2200	4000	5000	6000	7000	8000	9000																		
IM	3.1 NM	3.1 NM	3.1 NM	3.1 NM	3.1 NM	3.1 NM																		
1030'	4.7 NM	5.7 NM																						
<table border="1"> <tr> <td>CATEGORY</td> <td>A</td> <td>B</td> <td>C</td> <td>D</td> </tr> <tr> <td>S-ILS 28R</td> <td colspan="4">RA 161/14 150 DA 801</td> </tr> </table>				CATEGORY	A	B	C	D	S-ILS 28R	RA 161/14 150 DA 801														
CATEGORY	A	B	C	D																				
S-ILS 28R	RA 161/14 150 DA 801																							

## SA CATEGORY I ILS - SPECIAL AIRCREW & AIRCRAFT CERTIFICATION REQUIRED