

LOC/DME I-VQX 110.75 Chan 44(Y)	APP CRS 274°	Rwy ldg TDZE Apt Elev	7500 667 680
---	------------------------	-----------------------------	---

ILS RWY 28L (SA CAT I)

CHICAGO O'HARE INTL (ORD)

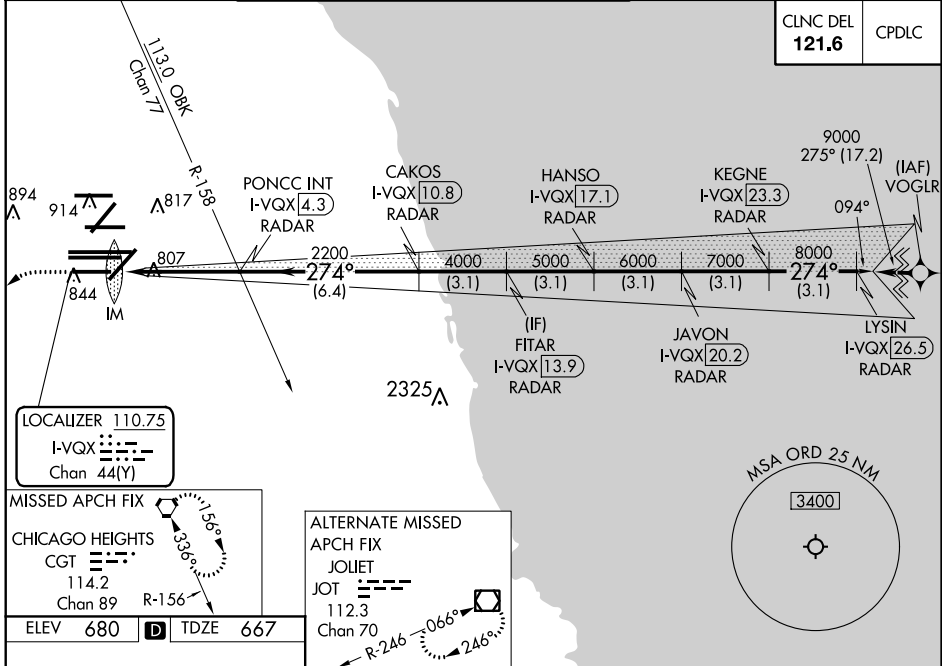
From VOGLR: RNAV 1-GPS required.
 Aircraft not GPS equipped - RADAR required for procedure entry. DME or RADAR required.
 Simultaneous approach authorized.
 Requires specific OPSPEC, MSPEC, or LOA approval and use of HUD to DH.



MISSED APPROACH: Climb to 1200 then climbing left turn to 4000 direct CGT VORTAC and hold.

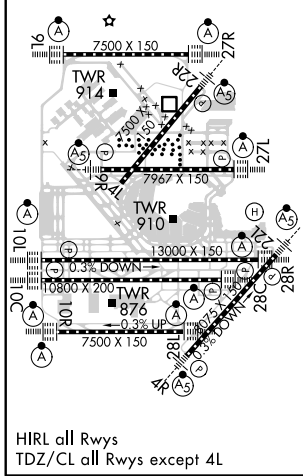
D-ATIS 135.4	CHICAGO APP CON 119.0 292.125	O'HARE TOWERS 128.15 348.0 (Rwy 9L/27R) 133.0 348.0 (10R/28L) 120.75 121.15 126.9 132.7 348.0 (CENTER)	GND CON (TWR NORTH) 124.125 (TWR SOUTH) 118.05 (ALL TWRs) 226.675	(TWR CENTER) 121.75 (OBND) (IBND) 121.9
------------------------	---	---	---	--

CLNC DEL 121.6	CPDLC
--------------------------	-------



EC-3, 15 AUG 2019 to 12 SEP 2019

EC-3, 15 AUG 2019 to 12 SEP 2019



ELEV 680	TDZE 667																	
1200	4000	CGT																
<table border="1"> <tr> <td>FITAR I-VQX 13.9</td> <td>JAVON I-VQX 20.2</td> <td>LYSIN I-VQX 26.5</td> </tr> <tr> <td>PONCC INT I-VQX 4.3</td> <td>HANSO I-VQX 17.1</td> <td>KEGNE I-VQX 23.3</td> </tr> <tr> <td>CAKOS I-VQX 10.8</td> <td>JAVON I-VQX 20.2</td> <td>LYSIN I-VQX 26.5</td> </tr> </table>			FITAR I-VQX 13.9	JAVON I-VQX 20.2	LYSIN I-VQX 26.5	PONCC INT I-VQX 4.3	HANSO I-VQX 17.1	KEGNE I-VQX 23.3	CAKOS I-VQX 10.8	JAVON I-VQX 20.2	LYSIN I-VQX 26.5							
FITAR I-VQX 13.9	JAVON I-VQX 20.2	LYSIN I-VQX 26.5																
PONCC INT I-VQX 4.3	HANSO I-VQX 17.1	KEGNE I-VQX 23.3																
CAKOS I-VQX 10.8	JAVON I-VQX 20.2	LYSIN I-VQX 26.5																
<table border="1"> <tr> <td>IM</td> <td>2200</td> <td>4000</td> <td>5000</td> <td>6000</td> <td>7000</td> <td>8000</td> <td>9000</td> </tr> <tr> <td>99°</td> <td>4.7 NM</td> <td>6.4 NM</td> <td>3.1 NM</td> <td>3.1 NM</td> <td>3.1 NM</td> <td>3.1 NM</td> <td>3.1 NM</td> </tr> </table>			IM	2200	4000	5000	6000	7000	8000	9000	99°	4.7 NM	6.4 NM	3.1 NM	3.1 NM	3.1 NM	3.1 NM	3.1 NM
IM	2200	4000	5000	6000	7000	8000	9000											
99°	4.7 NM	6.4 NM	3.1 NM	3.1 NM	3.1 NM	3.1 NM	3.1 NM											
CATEGORY	A	B	C	D														
S-ILS 28L	RA 157/14			150 DA 817														

SA CATEGORY I ILS-SPECIAL AIRCREW & AIRCRAFT CERTIFICATION REQUIRED