

LOC/DME I-VQX 110.75 Chan 44(Y)	APP CRS 274°	Rwy Idg TDZE Apt Elev	7500 667 680
---	------------------------	-----------------------------	---

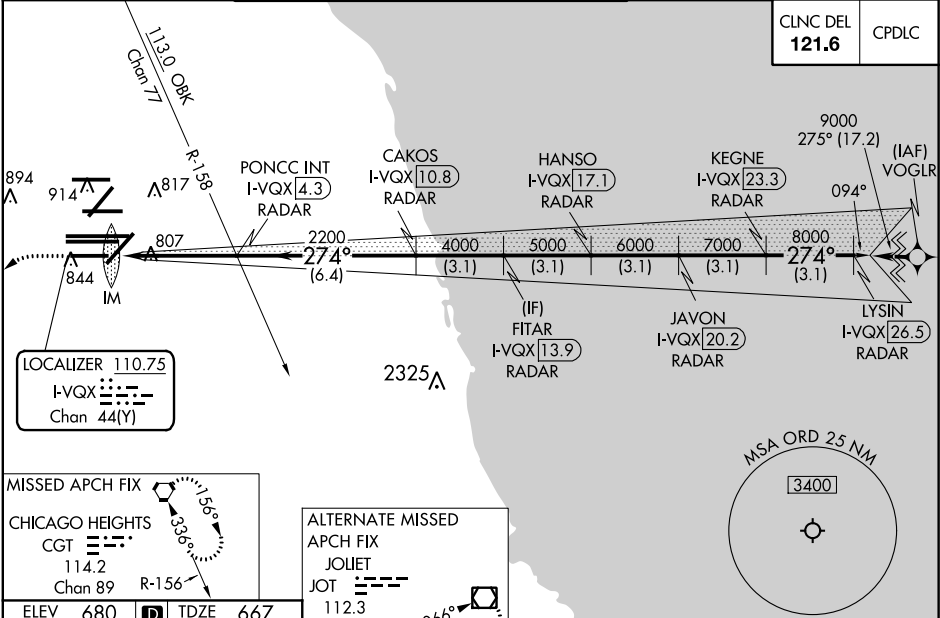
ILS RWY 28L (CAT II & III)

CHICAGO O'HARE INTL (ORD)

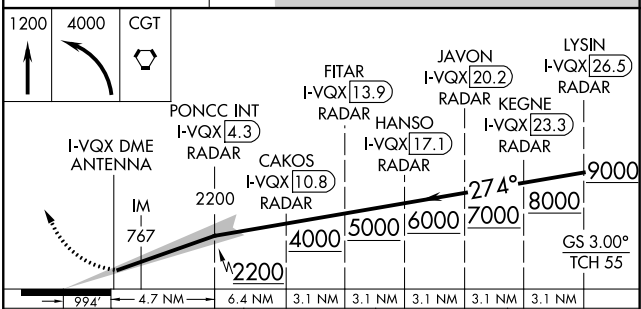
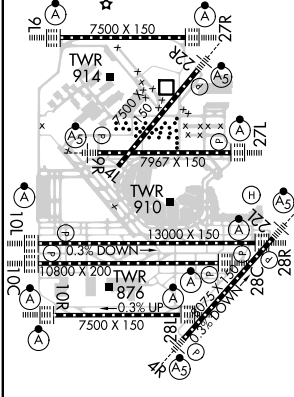
From VOGLR: RNAV 1-GPS required.
Aircraft not GPS equipped - RADAR required for procedure entry.
DME or RADAR required.
Simultaneous approach authorized.
CAT II: RVR 1000 authorized with specific OPSPEC, MSPEC, or LOA approval and use of autoland or HUD to touchdown.

ALSF-2
MISSED APPROACH:
Climb to 1200 then climbing left turn to 4000 direct CGT VORTAC and hold.

D-ATIS 135.4	CHICAGO APP CON 119.0 292.125	O'HARE TOWERS 128.15 348.0 (Rwy 9L/27R) 133.0 348.0 (10R/28L)				GND CON (TWR NORTH) 124.125	(TWR CENTER) 121.75 (OBND)
282.225		120.75	121.15	126.9	132.7 348.0 (CENTER)	(TWR SOUTH) 118.05	(IBND) 121.9
						226.675 (ALL TWRs)	



ELEV 680	D	TDZE 667
----------	---	----------



CATEGORY	A	B	C	D
S-ILS 28L	CAT II RA 106/12 100 DA 767			
S-ILS 28L	CAT III RVR 06			

CATEGORY II & III ILS - SPECIAL AIRCREW & AIRCRAFT CERTIFICATION REQUIRED

EC-3, 15 AUG 2019 to 12 SEP 2019

EC-3, 15 AUG 2019 to 12 SEP 2019