

LOC/DME I-AIC 110.5 Chan 42	APP CRS 273°	Rwy ldg 7782	TDZE 654	Apt Elev 680
-------------------------------------------------	------------------------	------------------------	--------------------	------------------------

ILS RWY 27L (SA CAT I)

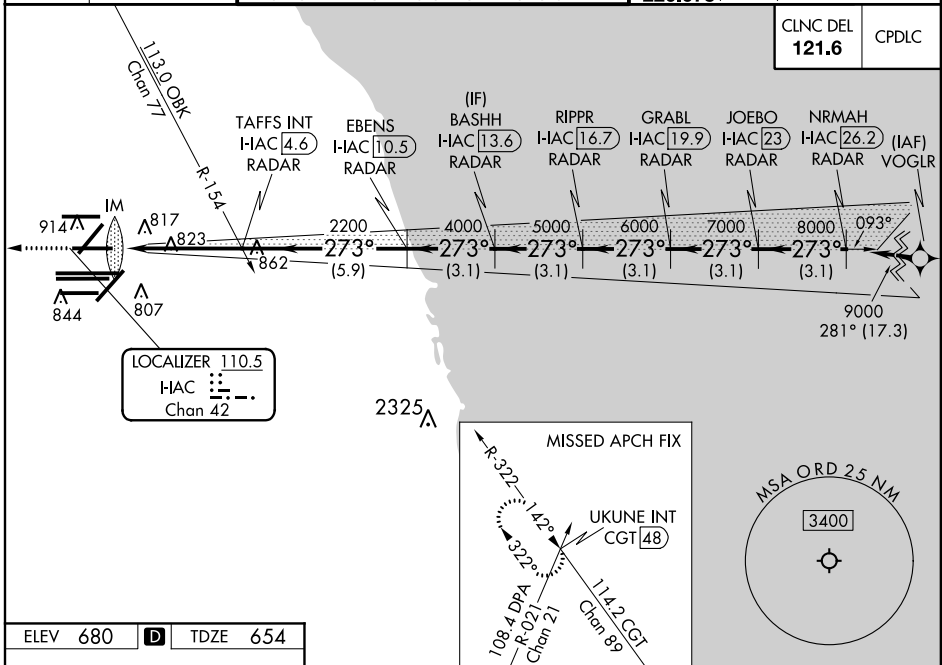
CHICAGO O'HARE INTL (ORD)

From VOGLR: RNAV 1-GPS required.
 Aircraft not GPS equipped - RADAR required for procedure entry. DME or RADAR required.
 Simultaneous approach authorized.
 Requires specific OPSPEC, MSPEC, or LOA approval and use of HUD to DH.



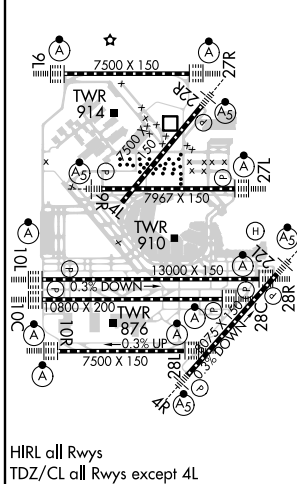
MISSED APPROACH: Climb to 1200 then climbing right turn to 4000 on heading 295° and on CGT VORTAC R-322 to UKUNE INT/CGT 48 DME and hold.

D-ATIS 135.4	CHICAGO APP CON 119.0 292.125	O'HARE TOWERS 128.15 348.0 (Rwy 9L/27R) 133.0 348.0 (10R/28L)	124.125 (TWR NORTH) 118.05 (TWR SOUTH) 226.675 (ALL TWRs)	GND CON (TWR CENTER) 121.75 (OBND) (TWR SOUTH) 121.9 (IBND)
------------------------	-----------------------------------------	--------------------------------------------------------------------------------	--------------------------------------------------------------------------------	---------------------------------------------------------------------------



CLNC DEL 121.6	CPDLC
--------------------------	-------

ELEV 680	D	TDZE 654
-----------------	----------	-----------------



1200	4000	CGT R-322	UKUNE INT	VGSI and ILS glidepath not coincident (VGSI Angle 3.00/TCH 67).								
<table border="1"> <tr> <td>HAC DME ANTENNA</td> <td>TAFSS INT I-HAC 4.6 RADAR</td> <td>EBENS I-HAC 10.5 RADAR</td> <td>BASHH I-HAC 13.6 RADAR</td> <td>RIPPR I-HAC 16.7 RADAR</td> <td>GRABL I-HAC 19.9 RADAR</td> <td>JOEBO I-HAC 23 RADAR</td> <td>NRMAH I-HAC 26.2 RADAR</td> </tr> </table>					HAC DME ANTENNA	TAFSS INT I-HAC 4.6 RADAR	EBENS I-HAC 10.5 RADAR	BASHH I-HAC 13.6 RADAR	RIPPR I-HAC 16.7 RADAR	GRABL I-HAC 19.9 RADAR	JOEBO I-HAC 23 RADAR	NRMAH I-HAC 26.2 RADAR
HAC DME ANTENNA	TAFSS INT I-HAC 4.6 RADAR	EBENS I-HAC 10.5 RADAR	BASHH I-HAC 13.6 RADAR	RIPPR I-HAC 16.7 RADAR	GRABL I-HAC 19.9 RADAR	JOEBO I-HAC 23 RADAR	NRMAH I-HAC 26.2 RADAR					
IM	2200	4000	5000	6000	7000	8000	9000					
1040'	4.7 NM	5.9 NM	3.1 NM	3.1 NM	3.1 NM	3.1 NM	3.1 NM					
CATEGORY	A	B	C	D								
S-ILS 27L	RA 164/14 150 DA 804											

SA CATEGORY I ILS-SPECIAL AIRCREW & AIRCRAFT CERTIFICATION REQUIRED

EC-3, 15 AUG 2019 to 12 SEP 2019

EC-3, 15 AUG 2019 to 12 SEP 2019