

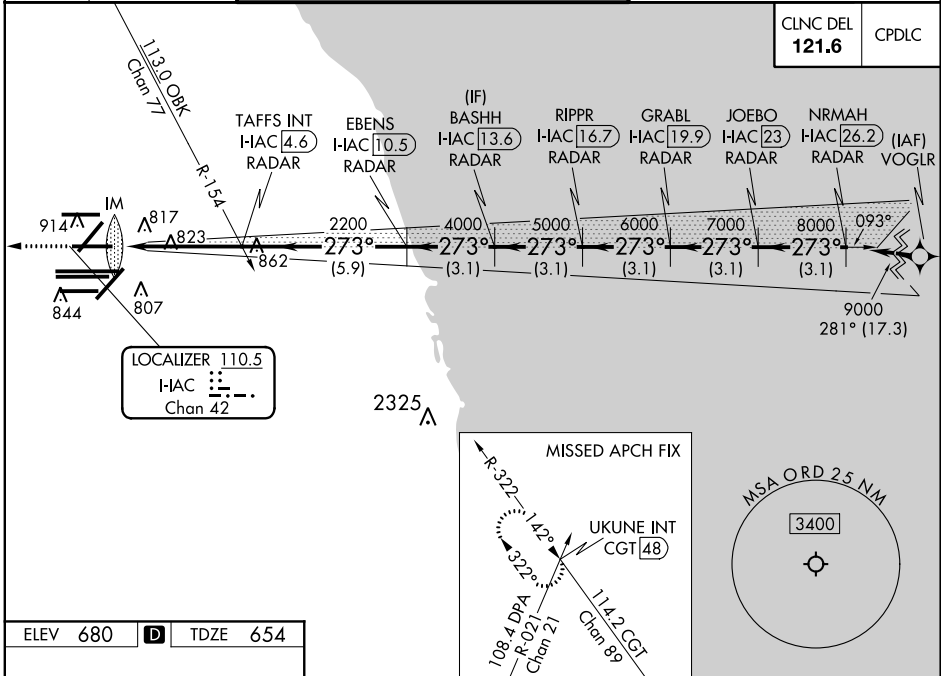
LOC/DME I-IAC 110.5 Chan 42	APP CRS 273°	Rwy ldg 7782 TDZE 654 Apt Elev 680
--	------------------------	--

ILS RWY 27L (CAT II & III)

CHICAGO O'HARE INTL (ORD)

From VOGLR: RNAV 1-GPS required. Aircraft not GPS equipped - RADAR required for procedure entry. DME or RADAR required.	ALSF-2 	MISSED APPROACH: Climb to 1200 then climbing right turn to 4000 on heading 295° and on CGT VORTAC R-322 to UKUNE INT/CGT 48 DME and hold.
Simultaneous approach authorized.		

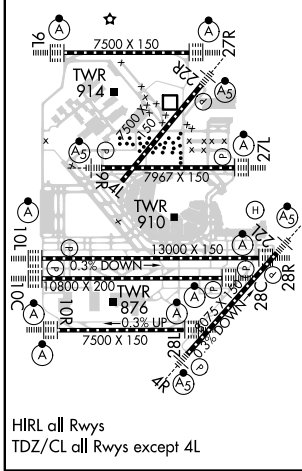
D-ATIS 135.4	CHICAGO APP CON 119.0 292.125	O'HARE TOWERS 128.15 348.0 (Rwy 9L/27R) 133.0 348.0 (10R/28L) 120.75 121.15 126.9 132.7 348.0 (CENTER)	GND CON (TWR NORTH) 124.125 (TWR SOUTH) 118.05 (ALL TWRs) 226.675	(TWR CENTER) (OBND) 121.75 (IBND) 121.9
------------------------	---	--	---	--



EC-3, 15 AUG 2019 to 12 SEP 2019

EC-3, 15 AUG 2019 to 12 SEP 2019

ELEV 680	D	TDZE 654
----------	----------	----------



1200	4000	CGT R-322	UKUNE INT	VGSIs and ILS glidepath not coincident (VGSi Angle 3.00/TCH 67).			
hdg 295°				BASHH I-IAC 13.6	GRABL I-IAC 19.9	JOEBO I-IAC 23	NRMAH I-IAC 26.2
		TAFS INT I-IAC 4.6	EBENS I-IAC 10.5	RIPPR I-IAC 16.7			
		I-IAC 4.6	I-IAC 10.5	I-IAC 16.7	I-IAC 23	I-IAC 26.2	
		2200	4000	5000	6000	7000	9000
		IM 750	GS 3.00° TCH 55				
		1040'	4.7 NM	5.9 NM	3.1 NM	3.1 NM	3.1 NM
CATEGORY	A	B		C		D	
S-ILS 27L	CAT II RA 110/12 100 DA 754						
S-ILS 27L	CAT III RVR 06						

CATEGORY II & III ILS - SPECIAL AIRCREW & AIRCRAFT CERTIFICATION REQUIRED