

LOC/DME I-SXH <b>108.95</b> Chan 26(Y)	APP CRS <b>093°</b>	Rwy Idg <b>10540</b> TDZE <b>669</b> Apt Elev <b>680</b>
--	------------------------	--

# ILS RWY 10C (CAT II & III)

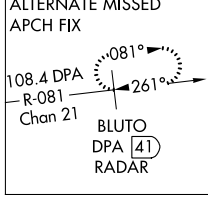
CHICAGO O'HARE INTL (ORD)

From GIBNS: RNAV-1 GPS required.  
 RNAV 1-GPS or RADAR required for procedure entry. DME or RADAR required.  
 Simultaneous approach authorized. CAT II: RVR 1000 authorized with specific OPSPEC, MSPEC, or LOA approval and use of autoland or HUD to touchdown.

ALSF-2  
 MISSED APPROACH: Climb to 4000 on heading 093° and CGT VORTAC R-336 to CGT VORTAC and hold.

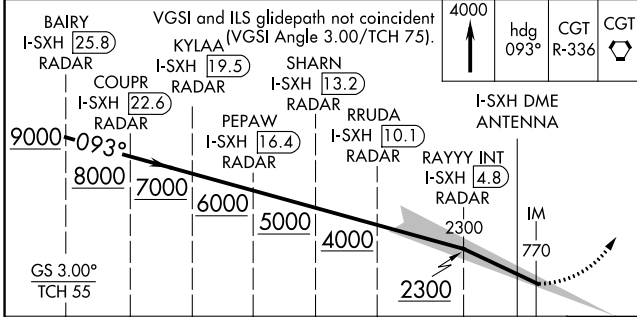
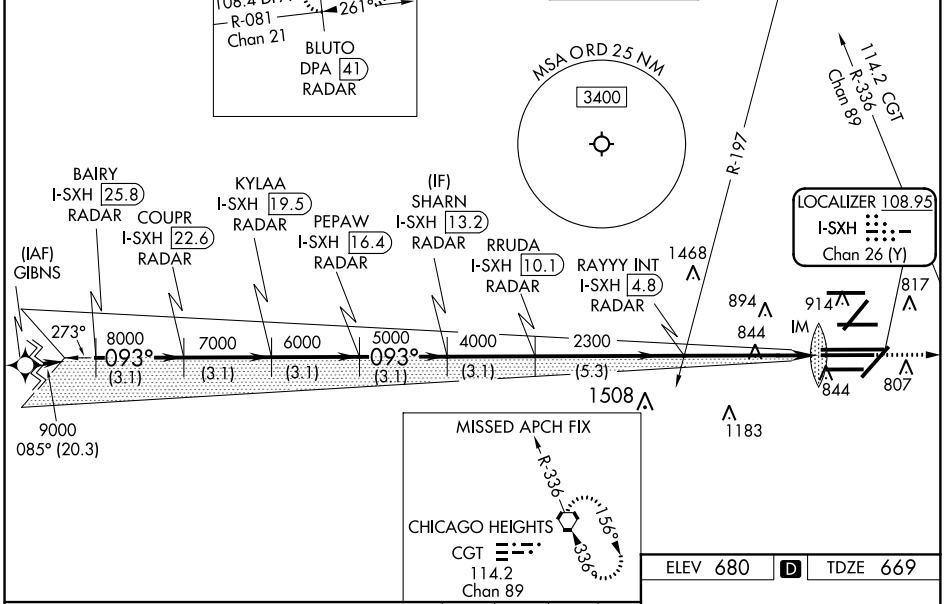
CHICAGO APP CON <b>119.0 292.125</b>	O'HARE TOWERS <b>128.15 348.0</b> (Rwy 9L/27R) <b>133.0 348.0</b> (10R/28L) <b>120.75 121.15 126.9 132.7 348.0</b> (CENTER)	GND CON (TWR CENTER) <b>124.125</b> (TWR NORTH) <b>121.75</b> (OBND) <b>118.05</b> (TWR SOUTH) <b>121.9</b> (IBND) <b>226.675</b> (ALL TWRs)	CLNC DEL <b>121.6</b>
---	---	---	--------------------------

D-ATIS  
**135.4**  
**282.225**

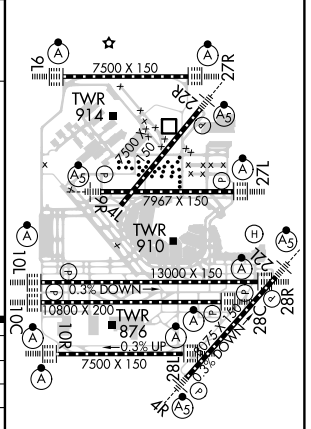


NORTHBROOK  
**113.0** OBK  
Chan 77

CPDLC



ELEV 680	<b>D</b>	TDZE 669
----------	----------	----------



BAIRY I-SXH [25.8] RADAR	KYLAA I-SXH [19.5] RADAR	SHARN I-SXH [13.2] RADAR	PEPAW I-SXH [16.4] RADAR	RRUDA I-SXH [10.1] RADAR	RAYYY INT I-SXH [4.8] RADAR
COUPR I-SXH [22.6] RADAR	I-SXH DME ANTENNA				
CATEGORY A      B      C      D S-ILS 10C      CAT II RA 102/12 100 DA 769 S-ILS 10C      CAT III RVR 06					

## CATEGORY II and III ILS - SPECIAL AIRCREW & AIRCRAFT CERTIFICATION REQUIRED

HIRL all Rwys  
 TDZ/CL all Rwys except 4L

EC-3, 15 AUG 2019 to 12 SEP 2019

EC-3, 15 AUG 2019 to 12 SEP 2019