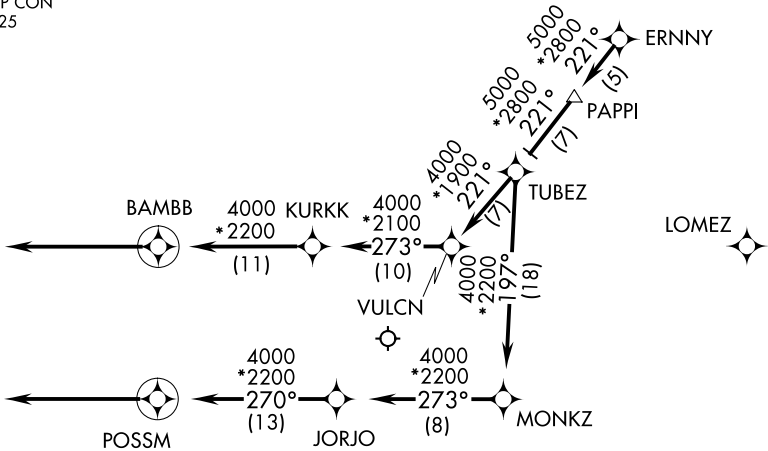


# ERNNY FIVE ARRIVAL (RNAV) Arrival Routes

D-ATIS  
135.4 282.225  
CHICAGO APP CON  
119.0 292.125



- NOTE: RADAR required.
- NOTE: RNAV 1.
- NOTE: DME/DME/IRU or GPS required.
- NOTE: Landing RwyS 4L/R, 22L/R, 27L/R, 28L/C/R: Expect RADAR vectors to final approach course after ERNNY.

NOTE: Chart not to scale.

## ARRIVAL ROUTE DESCRIPTION

From ERNNY on track 221° to PAPP1, then on track 221° to TUBEZ.

LANDING RWYS 4L/R, 09L/R, 10L/C, 22L/R, 27L/R, 28L/C/R: From TUBEZ on track 221° to VULCN, then on track 273° to KURKK, then on track 273° to BAMBB, then on track 273°. Expect RADAR vectors to final approach course.

LANDING RWY 10R: From TUBEZ on track 197° to MONKZ, then on track 273° to JORJO, then on track 270° to POSSM, then on track 270°. Expect RADAR vectors to final approach course.