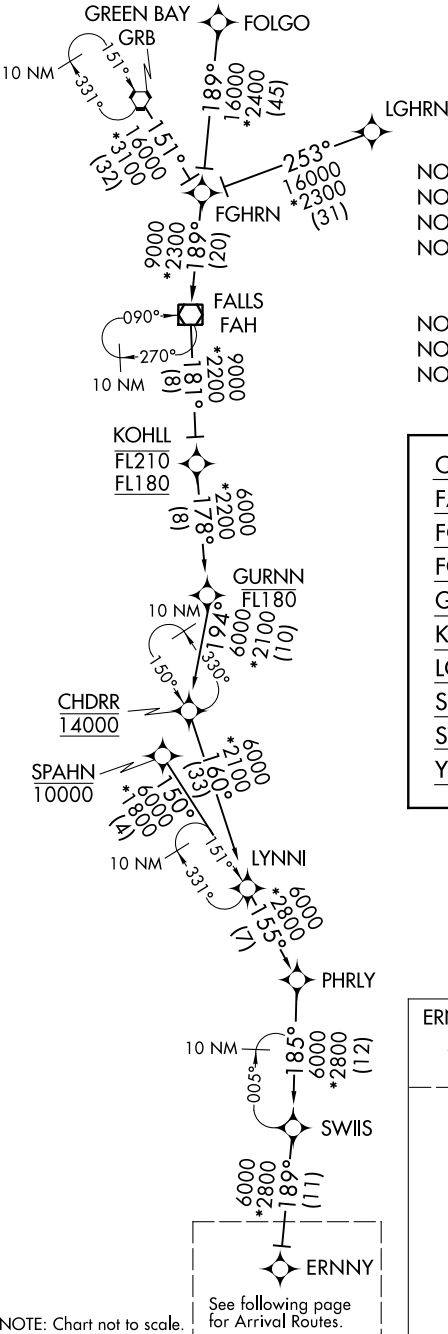


ERNNY FIVE ARRIVAL (RNAV) Transition Routes

CHICAGO, ILLINOIS

D-ATIS  
135.4 282.225  
CHICAGO APP CON  
119.0 292.125

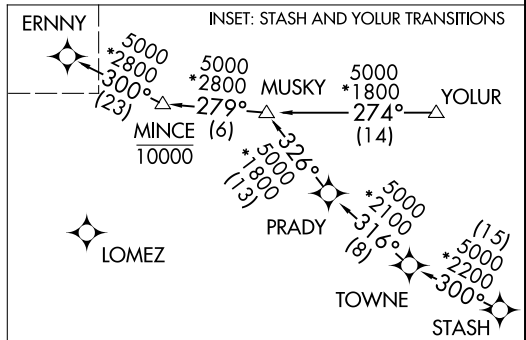


- NOTE: RADAR required.
- NOTE: RNAV 1.
- NOTE: DME/DME/IRU or GPS required.
- NOTE: Landing Rwy: 4L/R, 22L/R, 27L/R, 28L/C/R: Expect RADAR vectors to final approach course after ERNNY.
- NOTE: YOLUR transition - ATC assigned only.
- NOTE: STASH transition - ATC assigned only.
- NOTE: SPAHN transition: For Milwaukee terminal area departures only.

- CHDRR TRANSITION (CHDRR.ERNNY5):
- FALLS TRANSITION (FAH.ERNNY5):
- FGHRN TRANSITION (FGHRN.ERNNY5):
- FOLGO TRANSITION (FOLGO.ERNNY5):
- GREEN BAY TRANSITION (GRB.ERNNY5):
- KOHL TRANSITION (KOHLL.ERNNY5):
- LGHRN TRANSITION (LGHRN.ERNNY5):
- SPAHN TRANSITION (SPAHN.ERNNY5):
- STASH TRANSITION (STASH.ERNNY5):
- YOLUR TRANSITION (YOLUR.ERNNY5):

(CONTINUED ON FOLLOWING PAGE)

NOTE: Chart not to scale. See following page for Arrival Routes.



EC-3, 15 AUG 2019 to 12 SEP 2019

EC-3, 15 AUG 2019 to 12 SEP 2019