

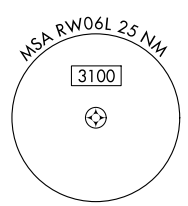
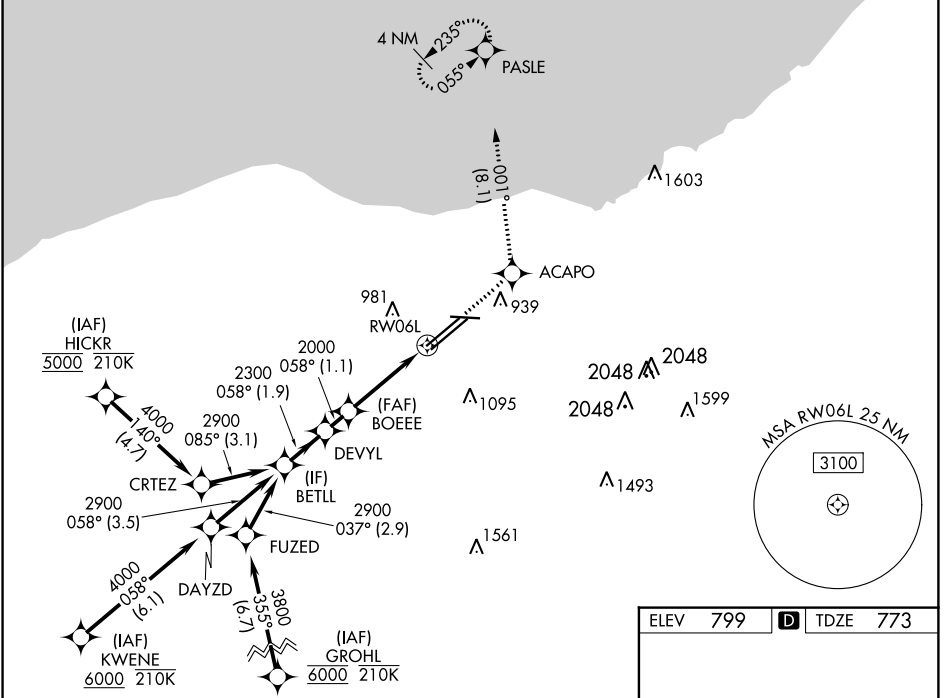
WAAS CH 56204 W06A	APP CRS 058°	Rwy Idg 9000 TDZE 773 Apt Elev 799
--	------------------------	---

RNAV (GPS) Y RWY 6L

CLEVELAND-HOPKINS INTL (CLE)

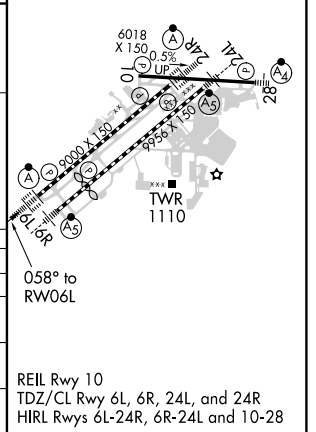
RNP APCH.	ALSF-2 	MISSED APPROACH: Climb to 3000 direct ACAPO and on track 001° to PASLE and hold.
<p>▼ For uncompensated Baro-VNAV systems, LNAV/VNAV NA below -18°C (0°F) or above 54°C (130°F). Circling Rwy 10 NA at night. For inop ALS, increase LNAV/VNAV all Cats visibility to RVR 5500 and increase LNAV Cats C/D visibility to 1½ SM.</p>		

D-ATIS ARR 127.85 DEP 132.375	CLEVELAND APP CON 124.0 354.025	CLEVELAND TOWER 124.5 273.45	GND CON 121.7 273.45	CLNC DEL 125.05 273.45	CPDLC
---	---	--	--------------------------------	----------------------------------	-------



ELEV 799	D TDZE 773
-----------------	--------------------------

VGSi and RNAV glidepath not coincident (VGSi Angle 3.00/TCH 69).		3000	ACAPO	PASLE
BETLL		↑	tr 001°	
2900				
058°				
DEVYL				
2300				
BOEEE				
2000				
1.9 NM		*LNAV only.		
1.1 NM		*1.3 NM to RW06L		
2.4 NM		RW06L		
1.3 NM				
CATEGORY	A	B	C	D
LPV DA	973/18		200 (200-½)	
LNAV/VNAV DA	1120/30		347 (400-¾)	
LNAV MDA	1260/24 487 (500-½)		1260/50 487 (500-1)	
C CIRCLING	1420-1 621 (700-1)		1420-2 621 (700-2)	



EC-2, 15 AUG 2019 to 12 SEP 2019

EC-2, 15 AUG 2019 to 12 SEP 2019