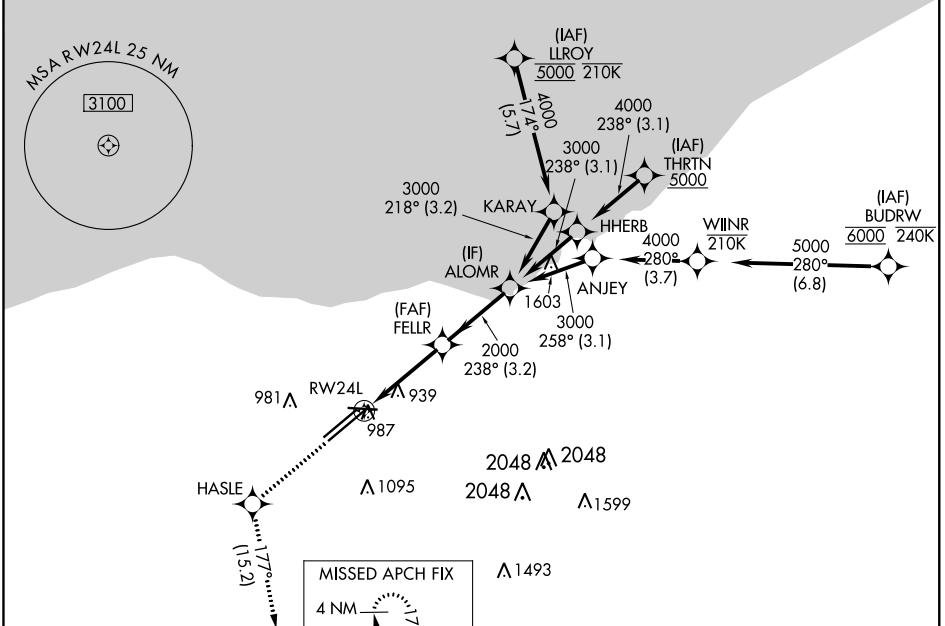


WAAS CH <b>77506</b> <b>W24B</b>	APP CRS <b>238°</b>	Rwy Idg TDZE Apt Elev	<b>9956</b> <b>786</b> <b>799</b>
--	------------------------	-----------------------------	---

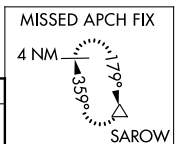
# RNAV (GPS) Y RWY 24L

CLEVELAND-HOPKINS INTL (CLE)

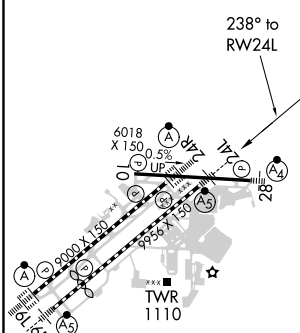
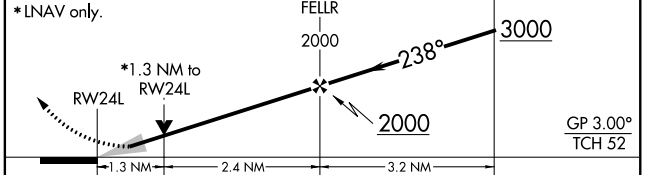
RNP APCH. ▼ Circling Rwy 10 NA at night. For uncompensated Baro-VNAV systems, LNAV/VNAV NA below -1°C or above 54°C.		MALSR 	MISSED APPROACH: Climb to 3000 direct HASLE and on track 177° to SAROW and hold.		
D-ATIS ARR <b>127.85</b> DEP <b>132.375</b>	CLEVELAND APP CON <b>124.0 354.025</b>	CLEVELAND TOWER <b>124.5 273.45</b>	GND CON <b>121.7 273.45</b>	CLNC DEL <b>125.05 273.45</b>	CPDLC



ELEV 799	<b>D</b>	TDZE 786
----------	----------	----------



3000 HASLE SAROW  
↑ tr 177°   
VGSI and RNAV glidepath not coincident (VGSI Angle 3.00/TCH 48).



REIL Rwy 10  
TDZ/CL Rwy 6L, 6R, 24L and 24R  
HIRL Rwy 6L-24R, 6R-24L and 10-28

CATEGORY	A	B	C	D
LPV DA		986/18	200 (200-½)	
LNAV/VNAV DA		1168/35	382 (400-⅝)	
LNAV MDA	1240/24	454 (500-½)	1240/45	454 (500-⅞)
<b>C</b> CIRCLING	1420-1	621 (700-1)	1420-1¾ 621 (700-1¾)	1420-2 621 (700-2)

EC-2: 15 AUG 2019 to 12 SEP 2019

EC-2: 15 AUG 2019 to 12 SEP 2019