

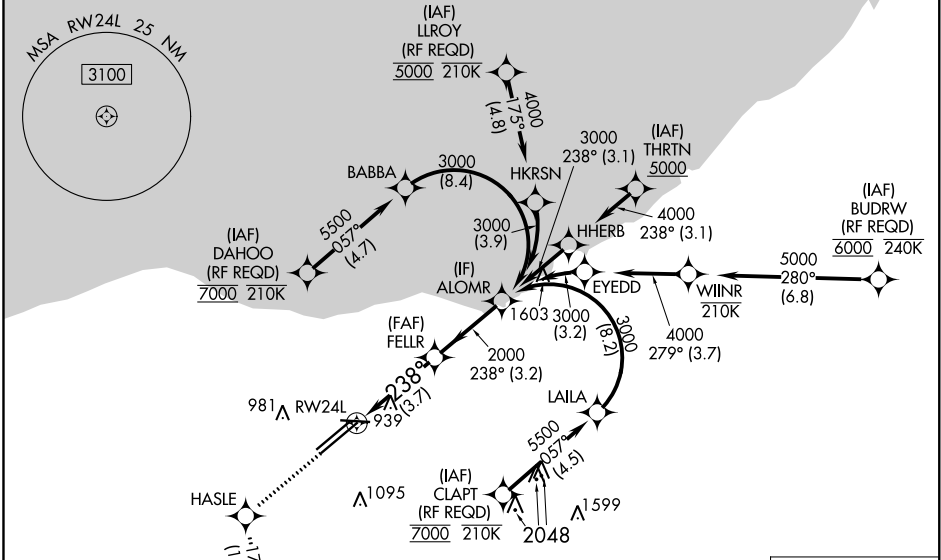
RNAV (RNP) Z RWY 24L

CLEVELAND-HOPKINS INTL (CLE)

APP CRS 238°	Rwy Idg TDZE 786	9956
	Apt Elev 799	

RNP AR APCH.		MALSR	MISSED APPROACH: Climb to 3000 direct HASLE and on track 177° to SAROW and hold.	
<p>▼ For uncompensated Baro-VNAV systems, procedure NA below -18°C (0°F) or above 54°C (130°F). For inop ALS, increase RNP 0.19 all Cats visibility to RVR 5500.</p>				

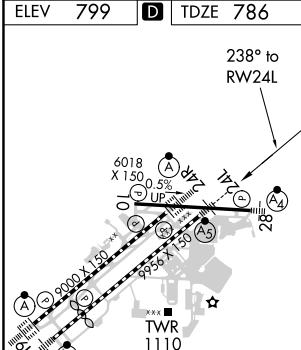
D-ATIS ARR 127.85 DEP 132.375	CLEVELAND APP CON 124.0 354.025	CLEVELAND TOWER 124.5 273.45	GND CON 121.7 273.45	CLNC DEL 125.05 273.45	CPDLC
---	---	--	--------------------------------	----------------------------------	-------



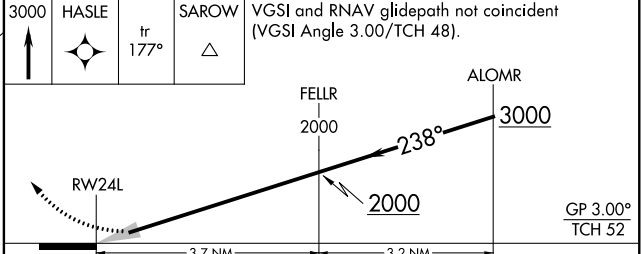
EC-2. 15 AUG 2019 to 12 SEP 2019

EC-2. 15 AUG 2019 to 12 SEP 2019

ELEV 799	D	TDZE 786
-----------------	----------	-----------------



3000	HASLE	SAROW	VGSI and RNAV glidepath not coincident (VGSI Angle 3.00/TCH 48).
↑	tr 177°	△	



CATEGORY	A	B	C	D
RNP 0.19 DA		1140/30	354 (400-%)	
RNP 0.30 DA		1243/45	457 (500-%)	

REIL Rwy 10
TDZ/CL Rwy 6L, 6R, 24L and 24R
HIRL Rwy 6L-24R, 6R-24L and 10-28

AUTHORIZATION REQUIRED