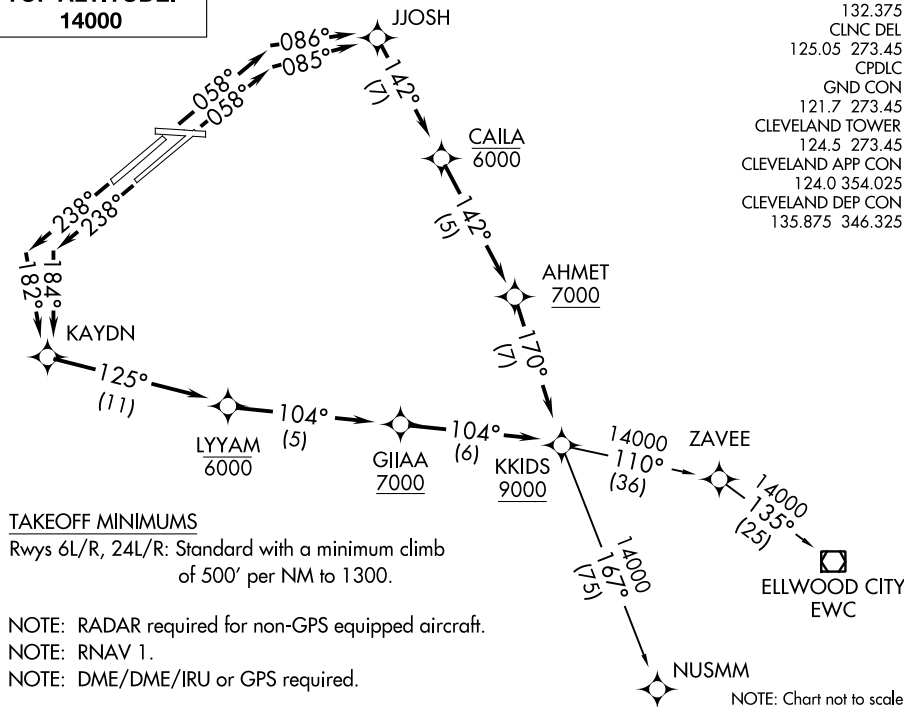


# KKIDS ONE DEPARTURE (RNAV)

**TOP ALTITUDE:  
14000**

D-ATIS 132.375  
 CLNC DEL 125.05 273.45  
 CPDLC  
 GND CON 121.7 273.45  
 CLEVELAND TOWER 124.5 273.45  
 CLEVELAND APP CON 124.0 354.025  
 CLEVELAND DEP CON 135.875 346.325



### TAKEOFF MINIMUMS

Rwys 6L/R, 24L/R: Standard with a minimum climb of 500' per NM to 1300.

NOTE: RADAR required for non-GPS equipped aircraft.

NOTE: RNAV 1.

NOTE: DME/DME/IRU or GPS required.

NOTE: Chart not to scale.



### DEPARTURE ROUTE DESCRIPTION

**TAKEOFF RUNWAY 06L:** Climb on heading 058° to intercept course 086° to JJOSH, then on track 142° to cross CAILA at or below 6000, then on track 142° to cross AHMET at or above 7000, then on track 170° to cross KKIDS at or above 9000 thence....

**TAKEOFF RUNWAY 06R:** Climb on heading 058° to intercept course 085° to JJOSH, then on track 142° to cross CAILA at or below 6000, then on track 142° to cross AHMET at or above 7000, then on track 170° to cross KKIDS at or above 9000 thence....

**TAKEOFF RUNWAY 24L:** Climb on heading 238° to intercept course 184° to KAYDN, then on track 125° to cross LYYAM at or below 6000, then on track 104° to cross GIIAA at or above 7000, then on track 104° to cross KKIDS at or above 9000, thence....

**TAKEOFF RUNWAY 24R:** Climb on heading 238° to intercept course 182° to KAYDN, then on track 125° to cross LYYAM at or below 6000, then on track 104° to cross GIIAA at or above 7000, then on track 104° to cross KKIDS at or above 9000, thence....

....on (Transition). Maintain 14000, expect filed altitude ten minutes after departure.

ELLWOOD CITY TRANSITION (KKIDS1.EWC)

NUSMM TRANSITION (KKIDS1.NUSMM)

# KKIDS ONE DEPARTURE (RNAV)