

| | | |
|--------------------------------|------------------------|------------------------|
| LOC/DME I-PVY 111.55 | APP CRS 238° | Rwy Idg 9000 |
| Chan 52(Y) | TDZE 780 | Apt Elev 799 |

ILS RWY 24R (SA CAT I)

CLEVELAND-HOPKINS INTL (CLE)

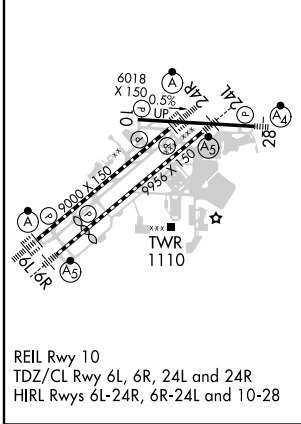
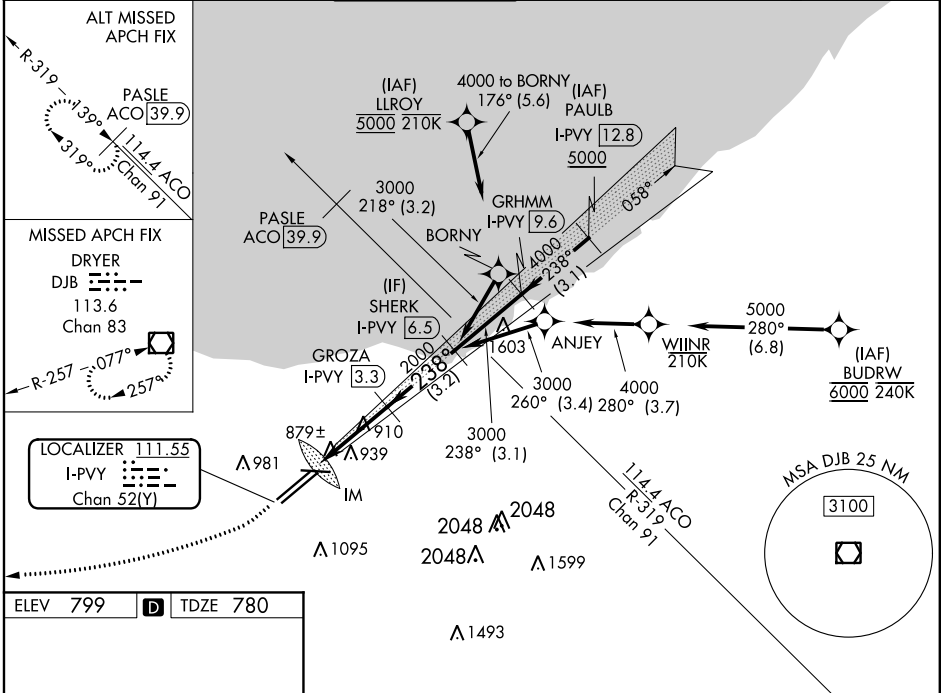
DME required. Aircraft not DME/DME/IRU or GPS equipped - RADAR required for procedure entry. RNAV 1. From LLROY and BUDRW: RNAV 1-DME/DME/IRU or GPS required for procedure entry.

ALSF-2

MISSED APPROACH: Climb to 1700 then climbing right turn to 3000 direct DJB VOR/DME and hold.

Requires specific OPSPEC, MSPEC, or LOA approval and use of HUD to DH. Simultaneous approach authorized. Simultaneous operations require use of vertical guidance; maintain last assigned altitude until established on glideslope.

| | | | | | |
|---|---|--|--------------------------------|----------------------------------|-------|
| D-ATIS ARR 127.85 DEP 132.375 | CLEVELAND APP CON 124.0 354.025 | CLEVELAND TOWER 124.5 273.45 | GND CON 121.7 273.45 | CLNC DEL 125.05 273.45 | CPDLC |
|---|---|--|--------------------------------|----------------------------------|-------|



| | | | | |
|-----------|----------------------|---|---|---|
| CATEGORY | A | B | C | D |
| S-ILS 24R | RA 150/14 150 DA 930 | | | |

SA CATEGORY I ILS - SPECIAL AIRCREW & AIRCRAFT CERTIFICATION REQUIRED

EC-2. 15 AUG 2019 to 12 SEP 2019

EC-2. 15 AUG 2019 to 12 SEP 2019