

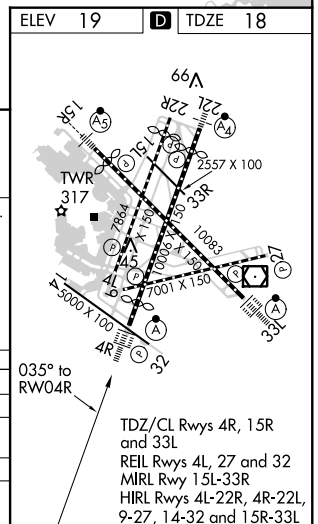
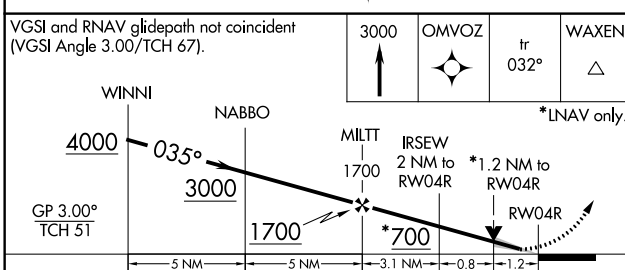
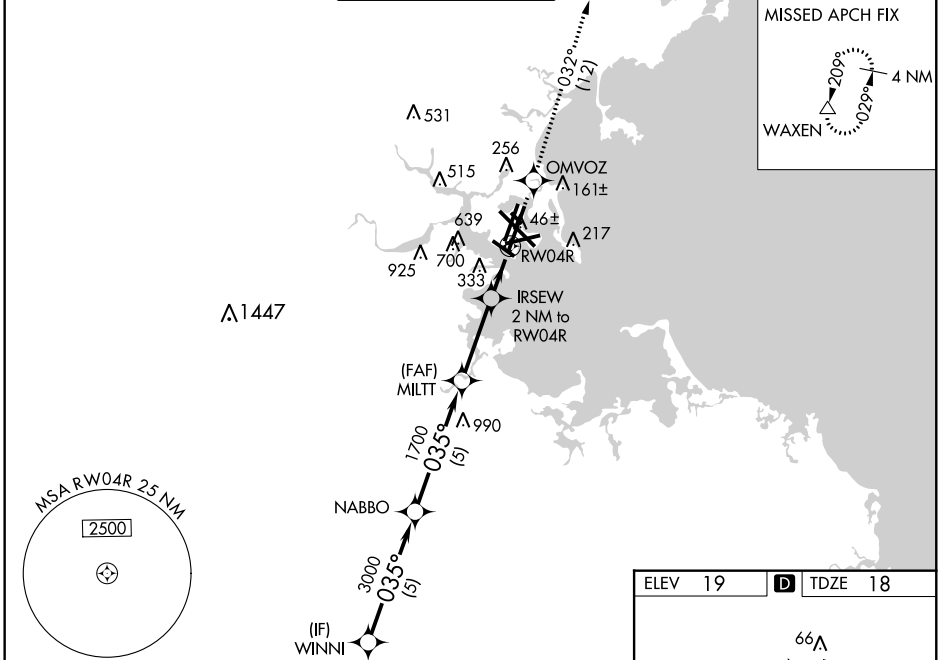
WAAS CH 50124 W04A	APP CRS 035°	Rwy Idg 8851 TDZE 18 Apt Elev 19
--	------------------------	---

RNAV (GPS) RWY 4R

GENERAL EDWARD LAWRENCE LOGAN INTL (BOS)

RNP APCH.	<p>ALSIF-2</p>	<p>MISSED APPROACH: Climb to 3000 direct OMVOZ and on track 032° to WAXEN and hold.</p>
<p>▼ Circling NA to Rwy 14. Circling NA for Cats C and D west of Rws 4L and 15R. When control tower reports tall vessels in approach area: increase LPV DA to 374 and all Cats visibility to RVR 4000, increase LNAV Cats A and B visibility to RVR 4000; Rwy 4R helicopter visibility reduction below RVR 4000 NA; for inop ALS, increase LPV all Cats visibility to RVR 6000 and LNAV Cats A and B visibility to RVR 5000. When vessels taller than 144 feet present, LPV and LNAV/VNAV NA. For uncompensated Baro-VNAV systems, LNAV/VNAV NA below -16°C or above 54°C.</p>		

D-ATIS 135.0	BOSTON APP CON 120.6 263.1	BOSTON TOWER 128.8 257.8	GND CON 121.9	CLNC DEL 121.65 257.8	CPDLC
------------------------	--------------------------------------	------------------------------------	-------------------------	---------------------------------	-------



CATEGORY	A	B	C	D
LPV DA		218/18	200 (200-½)	
LNAV/VNAV DA		514/60	496 (500-1¼)	
LNAV MDA	480/24	462 (500-½)	480/50	462 (500-1)
CIRCLING	960-1¼ 941 (1000-1¼)	1060-1½ 1041 (1100-1½)	640-1¾ 621 (700-1¾)	640-2 621 (700-2)

NE-1, 15 AUG 2019 to 12 SEP 2019

NE-1, 15 AUG 2019 to 12 SEP 2019