

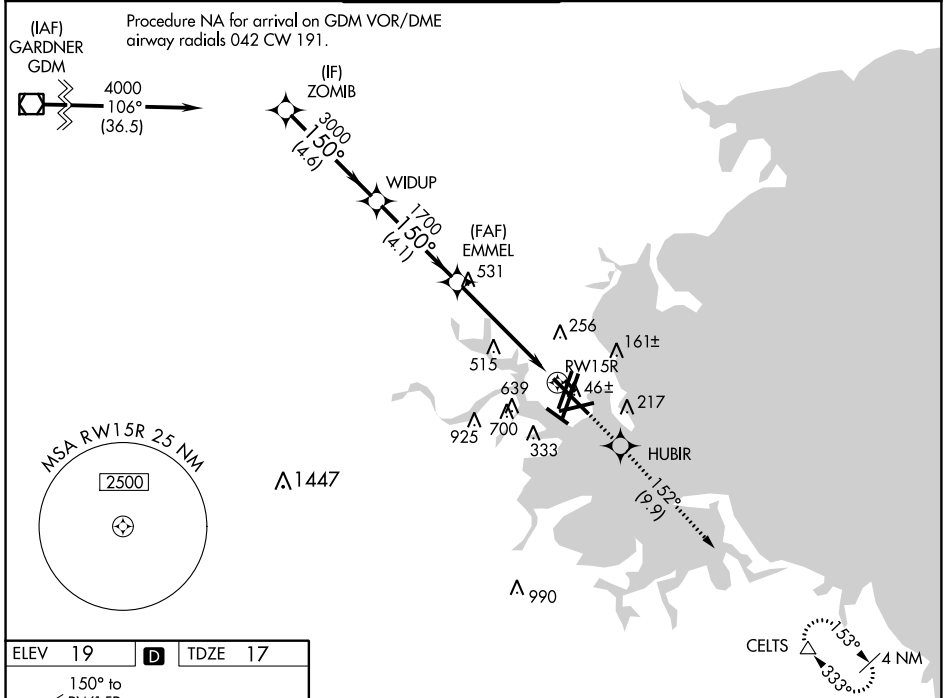
WAAS CH 42925 W15A	APP CRS 150°	Rwy ldg TDZE 17 Apt Elev 19	9201
--	------------------------	---	-------------

RNAV (GPS) RWY 15R

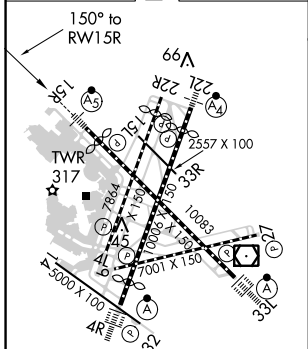
GENERAL EDWARD LAWRENCE LOGAN INTL (BOS)

<p>⚠ DME/DME RNP-0.3 NA. Circling NA to Rwy 14. Circling NA for Cats C and D west of Rws 4L and 15R. For inoperative ALS, increase LNAV Cats C and D visibility to 1 3/4 SM. For uncompensated Baro-VNAV systems, LNAV/VNAV NA below -13°C (9°F) or above 43°C (109°F).</p>	MALSR	<p>MISSED APPROACH: Climb to 3000 direct HUBIR and on track 152° to CELTS and hold.</p>

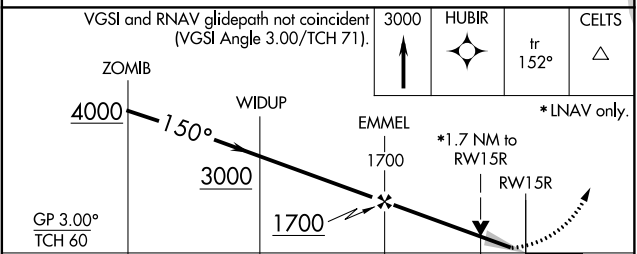
D-ATIS 135.0	BOSTON APP CON 120.6 263.1	BOSTON TOWER 128.8 257.8	GND CON 121.9	CLNC DEL 121.65 257.8	CPDLC
------------------------	--------------------------------------	------------------------------------	-------------------------	---------------------------------	-------



ELEV 19	D	TDZE 17
---------	----------	---------



TDZ/CL Rws 4R, 15R and 33L
 REIL Rws 4L, 27 and 32
 MIRL Rwy 15L-33R
 HIRL Rws 4L-22R, 4R-22L, 9-27, 14-32 and 15R-33L



CATEGORY	A	B	C	D
LPV DA		217/18	200 (200-1/2)	
LNAV/ VNAV DA		567-1 3/8	550 (600-1 3/8)	
LNAV MDA	620/24	603 (700-1/2)	620-1 3/8	603 (700-1 3/8)
CIRCLING	960-1 1/4 941 (1000-1 1/4)	1060-1 1/2 1041 (1100-1 1/2)	640-1 3/4 621 (700-1 3/4)	640-2 621 (700-2)

NE-1, 15 AUG 2019 to 12 SEP 2019

NE-1, 15 AUG 2019 to 12 SEP 2019