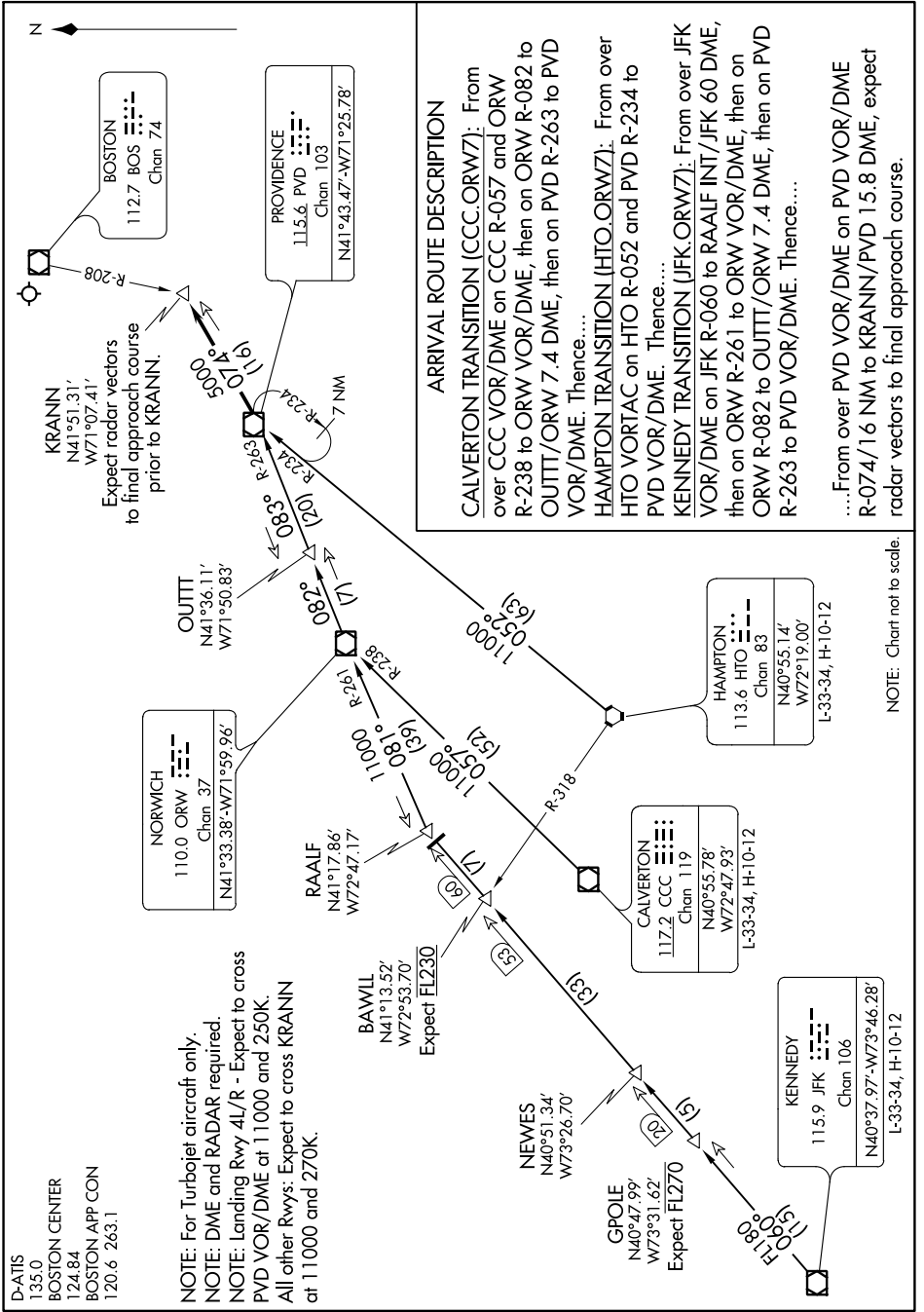


# NORWICH SEVEN ARRIVAL

NE-1, 15 AUG 2019 to 12 SEP 2019



D-ATIS  
135.0  
BOSTON CENTER  
124.84  
BOSTON APP CON  
120.6 263.1

NOTE: For Turbojet aircraft only.  
NOTE: DME and RADAR required.  
NOTE: Landing Rwy 4L/R - Expect to cross PVD VOR/DME at 11000 and 250K.  
All other Rwys: Expect to cross KRANN at 11000 and 270K.

### ARRIVAL ROUTE DESCRIPTION

**CALVERTON TRANSITION (CCC.ORW7):** From over CCC VOR/DME on CCC R-057 and ORW R-238 to ORW VOR/DME, then on ORW R-082 to OUTT/ ORW 7.4 DME, then on PVD R-263 to PVD VOR/DME. Thence....

**HAMPTON TRANSITION (HTO.ORW7):** From over HTO VORTAC on HTO R-052 and PVD R-234 to PVD VOR/DME. Thence....

**KENNEDY TRANSITION (JFK.ORW7):** From over JFK VOR/DME on JFK R-060 to RAALF INT/JFK 60 DME, then on ORW R-261 to ORW VOR/DME, then on ORW R-082 to OUTT/ ORW 7.4 DME, then on PVD R-263 to PVD VOR/DME. Thence....

...From over PVD VOR/DME on PVD VOR/DME R-074/16 NM to KRANN/PVD 15.8 DME, expect radar vectors to final approach course.

NOTE: Chart not to scale.

NE-1, 15 AUG 2019 to 12 SEP 2019