

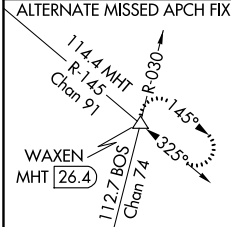
LOC/DME I-BOS <b>110.3</b> Chan <b>40</b>	APP CRS <b>035°</b>	Rwy Idg <b>8851</b> TDZE <b>18</b> Apt Elev <b>19</b>
---	------------------------	---

# ILS or LOC RWY 4R

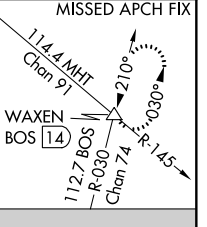
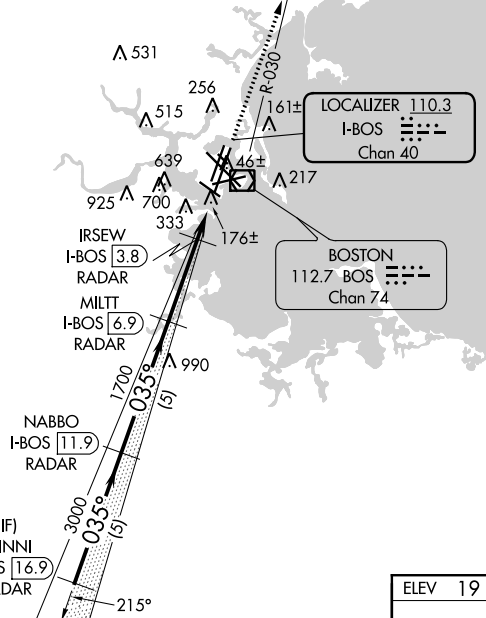
GENERAL EDWARD LAWRENCE LOGAN INTL (BOS)

<p><b>⚠</b> Circling NA for Cats C and D west of Rws 4L and 15R. Circling NA to Rwy 14.  <b>#</b> For inop ALS, increase S-ILS 4R all Cats visibility to RVR 6000, and S-LOC 4R Cats A and B visibility to RVR 5000; Rwy 4R helicopter visibility below 4000 RVR NA. <b>†</b> When vessels taller than 144 feet present, S-ILS 4R NA.</p>	<p>ALSF-2  </p>	<p>MISSED APPROACH: Climb to 3000 on BOS VOR/DME R-030 to WAXEN INT/BOS 14 DME and hold.</p>
---	---------------------	--

D-ATIS <b>135.0</b>	BOSTON APP CON <b>120.6 263.1</b>	BOSTON TOWER <b>128.8 257.8</b>	GND CON <b>121.9</b>	CINC DEL <b>121.65 257.8</b>	CPDLC
------------------------	--------------------------------------	------------------------------------	-------------------------	---------------------------------	-------

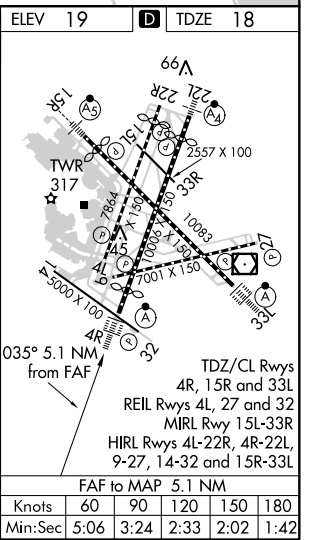
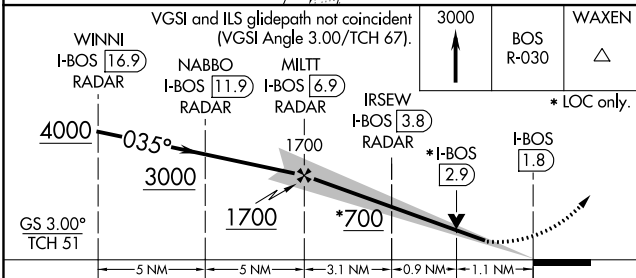


## RADAR REQUIRED



NE-1, 15 AUG 2019 to 12 SEP 2019

NE-1, 15 AUG 2019 to 12 SEP 2019



CATEGORY	A	B	C	D
S-ILS 4R		218/18	200 (200-½)	
S-LOC 4R	440/24	422 (500-½)	440/40	422 (500-¾)
CIRCLING	960-1¼	1060-1½	640-1¾	640-2
	941 (1000-1¼)	1041 (1100-1½)	621 (700-1¾)	621 (700-2)
† APPROACH MINIMA WHEN CONTROL TOWER REPORTS TALL VESSELS IN APPROACH AREA				
S-ILS 4R #		374/40	356 (400-¾)	
S-LOC 4R #		440/40	422 (500-¾)	

Knots	60	90	120	150	180
Min:Sec	5:06	3:24	2:33	2:02	1:42