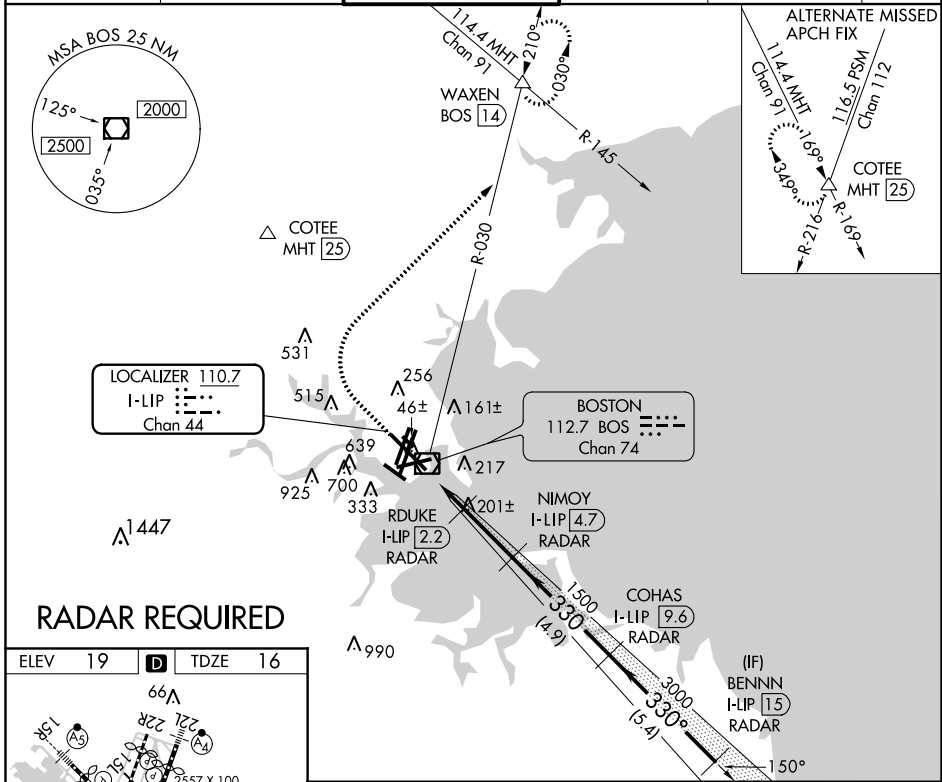


LOC/DME I-LIP	APP CRS	Rwy Idg	10083
110.7	330°	TDZE	16
Chan 44		Apt Elev	19

ILS or LOC RWY 33L

GENERAL EDWARD LAWRENCE LOGAN INTL (BOS)

<p>DME or RADAR required. Circling NA for Cats C and D west of Rwys 4L and 15R. Circling NA to Rwy 14.</p>	<p>ALSF-2</p>	<p>MISSED APPROACH: Climb to 1500 then climbing right turn to 3000 on BOS VOR/DME R-030 to WAXEN INT/BOS 1.4 DME and hold.</p>					
		D-ATIS	BOSTON APP CON	BOSTON TOWER	GND CON	CLNC DEL	CPDLC
		135.0	120.6 263.1	128.8 257.8	121.9	121.65 257.8	



RADAR REQUIRED

ELEV	19	D	TDZE	16	
<p>TDZ/CL Rwys 4R, 15R and 33L REIL Rwys 4L, 27 and 32 MIRL Rwy 15L-33R 330° 4.5 NM HIRL Rwys 4L-22R, 4R-22L, from FAF 9-27, 14-32 and 15R-33L FAF to MAP 4.5 NM</p>					
Knots	60	90	120	150	180
Min:Sec	4:30	3:00	2:15	1:48	1:30

1500	3000	WAXEN	VGSIL and ILS glidepath not coincident (VGSIL Angle 3.00/TCH 68).		BENNN		
		BOS R-030	NIMOY I-LIP 4.7 RADAR	COHAS I-LIP 9.6 RADAR	I-LIP 15 RADAR		
*LOC only.							
I-LIP 0.2	*I-LIP 1.4	RDUKE I-LIP 2.2 RADAR	1500	3000	4000		
			1.2 NM	0.8 NM	2.5 NM	4.9 NM	5.4 NM
CATEGORY							
S-ILS 33L		216/18		200 (200-½)			
S-LOC 33L		460/24 444 (500-½)		460/45 444 (500-¾)			
CIRCLING							
960-1¼		1060-1½		640-1¾		640-2	
941 (1000-1¼)		1041 (1100-1½)		621 (700-1¾)		621 (700-2)	

NE-1, 15 AUG 2019 to 12 SEP 2019

NE-1, 15 AUG 2019 to 12 SEP 2019