

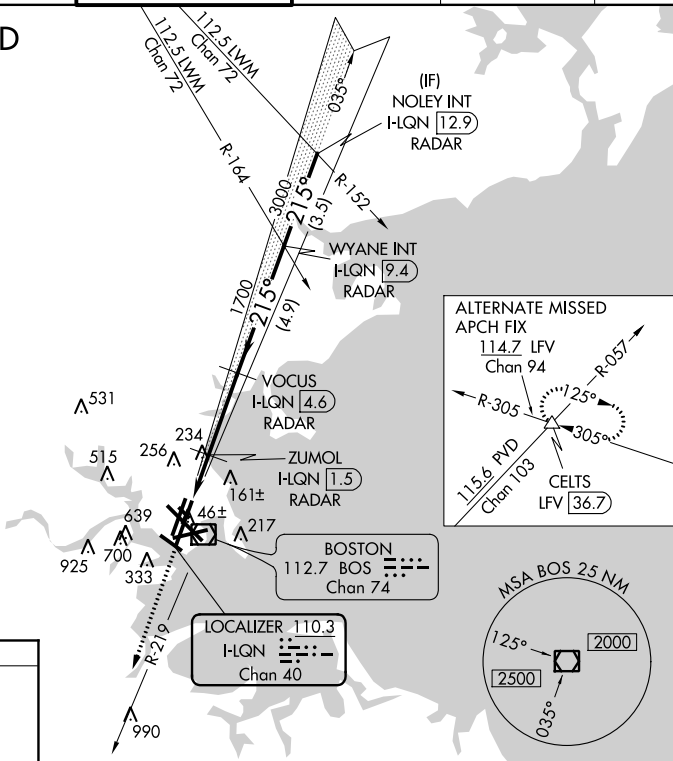
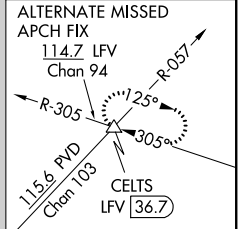
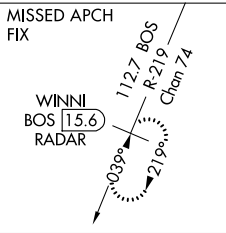
LOC/DME I-LQN <b>110.3</b> Chan 40	APP CRS <b>215°</b>	Rwy Idg <b>8806</b> TDZE <b>16</b> Apt Elev <b>19</b>
--	------------------------	---

# ILS or LOC RWY 22L

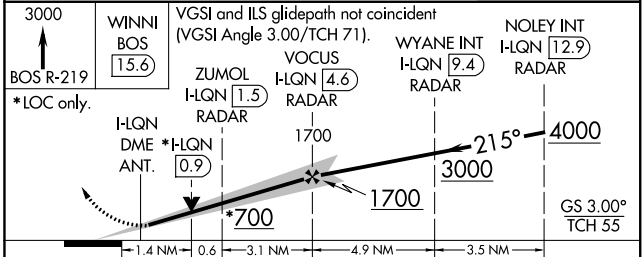
GENERAL EDWARD LAWRENCE LOGAN INTL (BOS)

<b>⚠</b> DME or RADAR required. Circling NA for Cats C and D west of Rws 4L and 15R. Circling NA to Rwy 14. For inoperative ALS, increase S-LOC 22L Cat D visibility to 1½ mile.	MALSF 	MISSED APPROACH: Climb to 3000 on BOS VOR/DME R-219 to WINNI/ BOS 15.6 DME/RADAR and hold.			
	D-ATIS <b>135.0</b>	BOSTON APP CON <b>120.6 263.1</b>	BOSTON TOWER <b>128.8 257.8</b>	GND CON <b>121.9</b>	CLNC DEL <b>121.65 257.8</b>

## RADAR REQUIRED



ELEV 19	TDZE 16
215° 5.1 NM from FAF	
TDZ/CL Rws 4R, 15R and 33L REIL Rws 4L, 27 and 32 MIRL Rwy 15L-33R HIRL Rws 4L-22R, 4R-22L, 9-27, 14-32 and 15R-33L	
FAF to MAP 5.1 NM	
Knots	60 90 120 150 180
Min:Sec	5:06 3:24 2:33 2:02 1:42



CATEGORY	A	B	C	D
S-ILS 22L	216/40 200 (200-¾)			
S-LOC 22L	540/40	524 (600-¾)	540-1¼	524 (600-1¼)
CIRCLING	960-1¼ 941 (1000-1¼)	1060-1½ 1041 (1100-1½)	640-1¾ 621 (700-1¾)	640-2 621 (700-2)

NE-1, 15 AUG 2019 to 12 SEP 2019

NE-1, 15 AUG 2019 to 12 SEP 2019