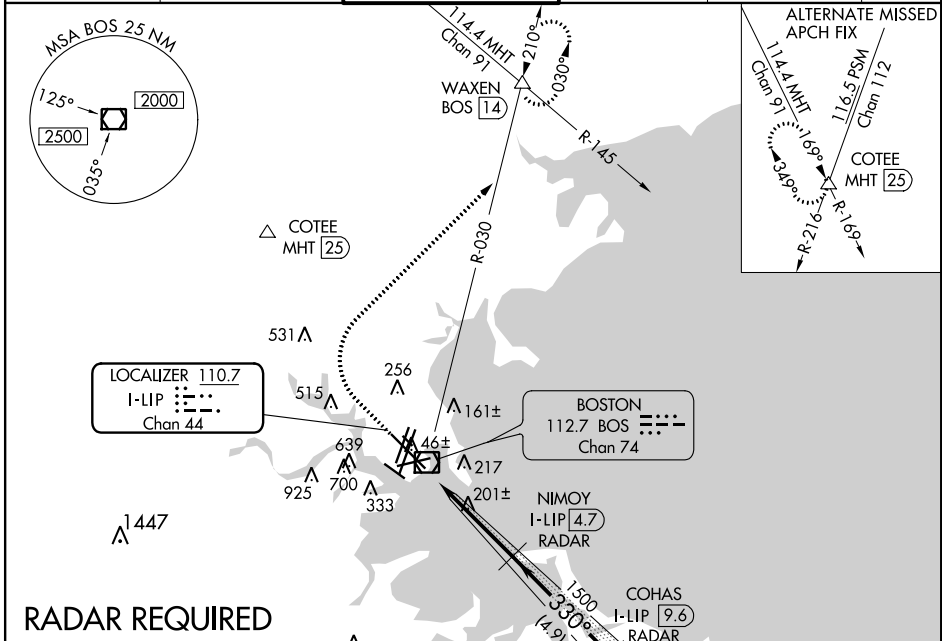


LOC/DME	I-LIP	APP CRS	Rwy Idg	<b>10083</b>
<b>110.7</b>		<b>330°</b>	TDZE	<b>16</b>
Chan <b>44</b>			Apt Elev	<b>19</b>

# ILS RWY 33L (SA CAT I)

## GENERAL EDWARD LAWRENCE LOGAN INTL (BOS)

DME or RADAR required. Requires specific OPSPEC, MSPEC, or LOA approval and use of HUD to DH.	ALSIF-2	MISSED APPROACH: Climb to 1500 then climbing right turn to 3000 on BOS VOR/DME R-030 to WAXEN INT/BOS 14 DME and hold.			
		D-ATIS	BOSTON APP CON	BOSTON TOWER	GND CON
<b>135.0</b>	<b>120.6 263.1</b>	<b>128.8 257.8</b>	<b>121.9</b>	<b>121.65 257.8</b>	

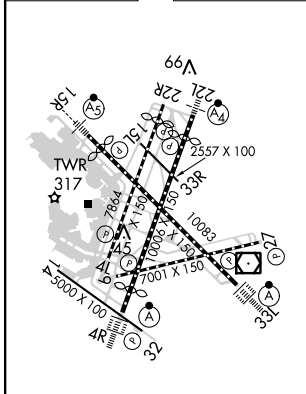


NE-1, 15 AUG 2019 to 12 SEP 2019

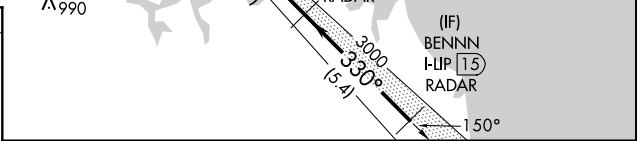
NE-1, 15 AUG 2019 to 12 SEP 2019

### RADAR REQUIRED

ELEV	<b>19</b>	<b>D</b>	TDZE	<b>16</b>
------	-----------	----------	------	-----------



TDZ/CL Rwy 4R, 15R and 33L  
 REIL Rwy 4L, 27 and 32  
 MIRL Rwy 15L-33R  
 HIRL Rwy 4L-22R, 4R-22L,  
 9-27, 14-32 and 15R-33L



1500	3000	WAXEN △	VGSI and ILS glidepath not coincident (VGSI Angle 3.00/TCH 68).	BENNN I-LIP 15 RADAR
		BOS R-030	NIMOY I-LIP 4.7 RADAR	COHAS I-LIP 9.6 RADAR
			1500	330°
			1500	3000
			4000	GS 3.00° TCH 57
			976'	4.5 NM
			4.9 NM	5.4 NM

CATEGORY	A	B	C	D
S-ILS 33L	RA 166/14 150 DA 166			

### SA CATEGORY I - SPECIAL AIRCREW & AIRCRAFT CERTIFICATION REQUIRED