

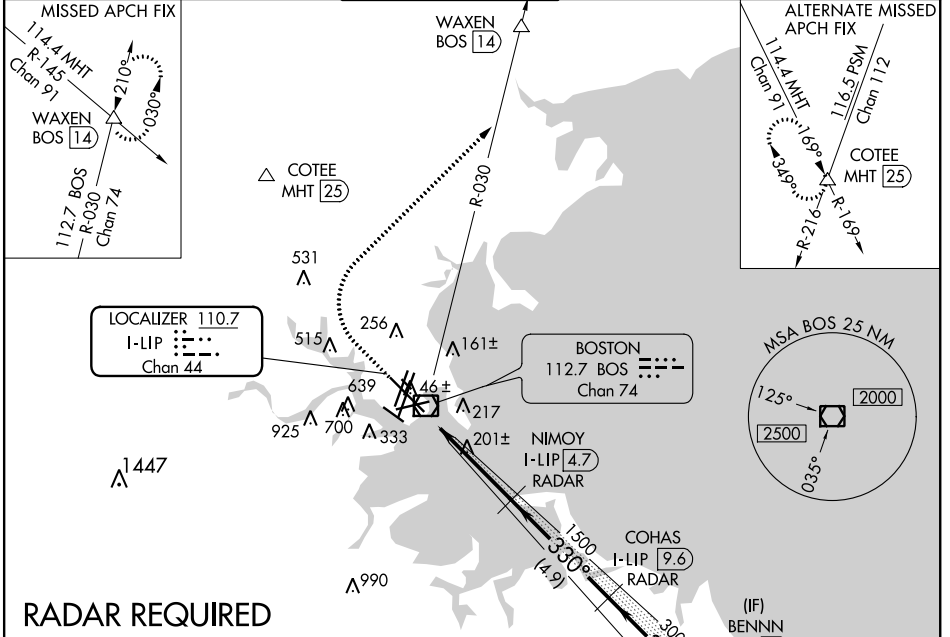
LOC/DME I-LIP <b>110.7</b> Chan <b>44</b>	APP CRS <b>330°</b>	Rwy Idg <b>10083</b> TDZE <b>16</b> Apt Elev <b>19</b>
---	------------------------	--

# ILS RWY 33L (CAT II & III)

GENERAL EDWARD LAWRENCE LOGAN INTL (BOS)

<p><b>▽</b> DME or RADAR required.</p> <p><b>▲</b> CAT II: RVR 1000 authorized with specific OPSPEC, MSPEC, or LOA approval and use of autoland or HUD to touchdown.</p>	<p>ALSF-2</p>	<p>MISSED APPROACH: Climb to 1500 then climbing right turn to 3000 on BOS VOR/DME R-030 to WAXEN INT/BOS 14 DME and hold.</p>
--	---------------	---

D-ATIS <b>135.0</b>	BOSTON APP CON <b>120.6 263.1</b>	BOSTON TOWER <b>128.8 257.8</b>	GND CON <b>121.9</b>	CLNC DEL <b>121.65 257.8</b>	CPDLC
------------------------	--------------------------------------	------------------------------------	-------------------------	---------------------------------	-------

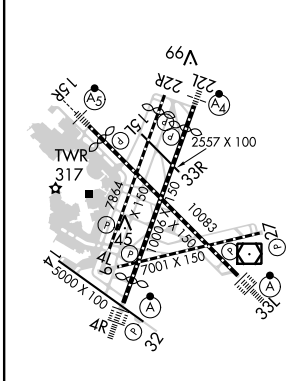


NE-1, 15 AUG 2019 to 12 SEP 2019

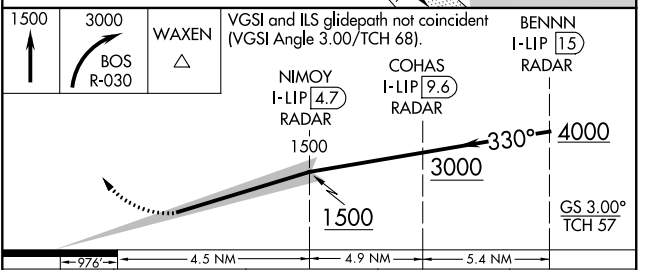
NE-1, 15 AUG 2019 to 12 SEP 2019

## RADAR REQUIRED

ELEV <b>19</b>	<b>D</b>	TDZE <b>16</b>
----------------	----------	----------------



TDZ/CL Rwy's 4R, 15R and 33L  
 REIL Rwy's 4L, 27 and 32  
 MIRL Rwy 15L-33R  
 HIRL Rwy's 4L-22R, 4R-22L,  
 9-27, 14-32 and 15R-33L



CATEGORY	A	B	C	D
S-ILS 33L	CAT II RA 116/12 100 DA 116			
S-ILS 33L	CAT III RVR 06			

## CATEGORY II & III ILS - SPECIAL AIRCREW & AIRCRAFT CERTIFICATION REQUIRED