

CELTK FIVE DEPARTURE (RNAV)

AL-58 (FAA)

BOSTON, MASSACHUSETTS

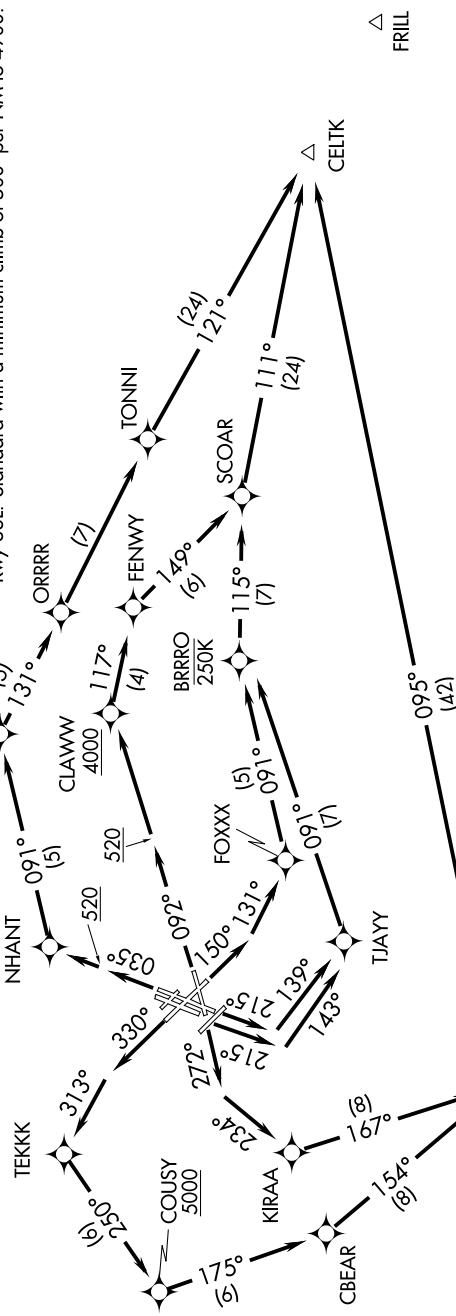
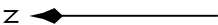
NE-1, 15 AUG 2019 to 12 SEP 2019

D-ATIS 135.0
 CLNC DEL 121.65 257.8
 CPDIC 121.9
 GND CON 121.9
 BOSTON TOWER 128.8 257.8
 BOSTON DEP CON 133.0

TOP ALTITUDE:
 5000

TAKEOFF MINIMUMS:

Rwys 4L, 14, 15L, 32, 33R: NA-ATC.
 Rwy 4R: Standard with minimum climb of 500' per NM to 3600.
 Rwy 9: Standard with minimum climb of 500' per NM to 4000.
 Rwy 15R: Standard with minimum climb of 500' per NM to 520.
 Rwy 22L: 300-1 with minimum climb of 500' per NM to 520, or standard with minimum climb of 500' per NM to 520 if lower reports no tall vessels in the departure area.
 Rwy 22R: Standard with minimum climb of 500' per NM to 1300.
 Rwy 27: Standard with a minimum climb of 500' per NM to 1300.
 Rwy 33L: Standard with a minimum climb of 500' per NM to 4900.



NOTE: Departure hdg/RNAV tracks/vectors are predicated on avoiding noise sensitive areas. Flight crew awareness and compliance is important in minimizing noise impacts on surrounding communities.
NOTE: Rwys 15R, 22L, 22R: Do not exceed 210K until 520' MSL.
NOTE: At/Below 250K until BRRRO.

NOTE: DME/DME/IRU or GPS required.
NOTE: RADAR required for non-GPS equipped aircraft.
NOTE: RNAV 1.
NOTE: For Turbojets only.

(NARRATIVE ON FOLLOWING PAGE)

NOTE: Chart not to scale.

CELTK FIVE DEPARTURE (RNAV)