

WAAS CH <b>99300</b> <b>W08B</b>	APP CRS <b>095°</b>	Rwy Idg <b>8800</b> TDZE <b>1015</b> Apt Elev <b>1026</b>
--	------------------------	---

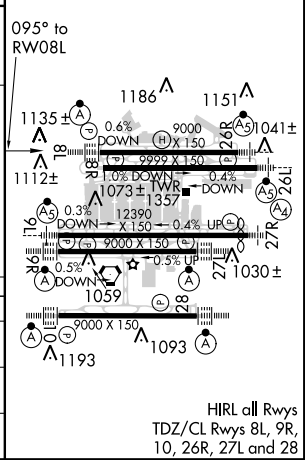
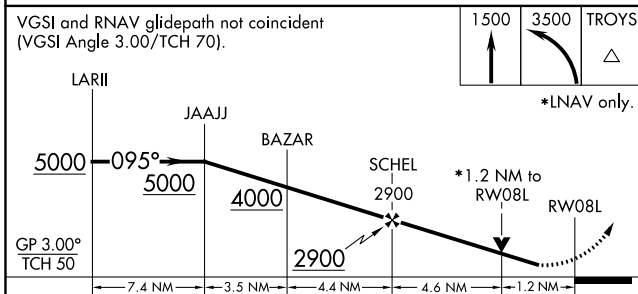
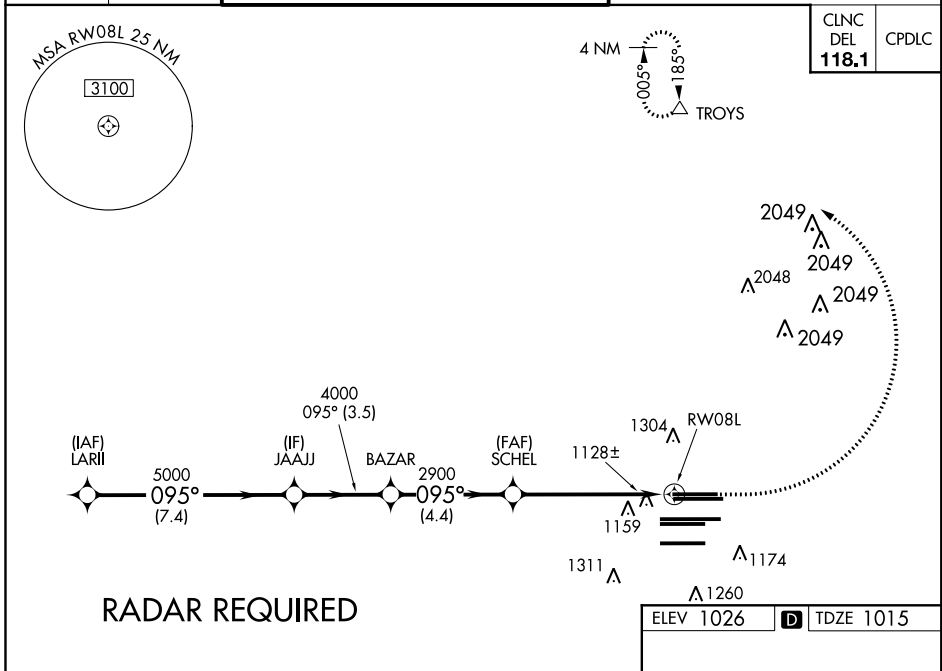
# RNAV (GPS) Y RWY 8L

HARTSFIELD-JACKSON ATLANTA INTL (ATL)

▼ For uncompensated Baro-VNAV systems, LNAV/VNAV NA below -7°C (20°F) or above 54°C (130°F). DME/DME RNP-0.3 NA. For inop ALSF-2, increase LNAV/VNAV all Cats visibility to 1¼ miles. Helicopter visibility reduction below RVR 4000 NA. LNAV procedure NA during simultaneous operations. Simultaneous approach authorized with Rwy 9L or 9R or 10, or Rwys 9L and 10. Use of FD or AP providing RNAV track guidance required during simultaneous operations.

ALSF-2 MISSED APPROACH:  
Climb to 1500 then climbing left turn to 3500 direct TROYS and hold.

D-ATIS ARR <b>119.65</b>	ATLANTA APP CON	ATLANTA TOWER					ALL RWYS	GND CON	ALL RWYS
DEP <b>125.55</b>	<b>127.9 379.9</b>	<b>119.1</b>	<b>125.325</b>	<b>123.85</b>	<b>119.3</b>	<b>119.5</b>	<b>254.4</b>	<b>121.9</b>	<b>121.75 121.65 254.4</b>



CATEGORY	A	B	C	D
LPV DA		1215/18	200 (200-½)	
LNAV/VNAV DA		1404/45	389 (400-¾)	
LNAV MDA	1460/24	445 (500-½)	1460/45	445 (500-¾)

SE-4, 15 AUG 2019 to 12 SEP 2019

SE-4, 15 AUG 2019 to 12 SEP 2019