

RNAV (GPS) PRM Y RWY 26R (SIMULTANEOUS CLOSE PARALLEL) HARTSFIELD-JACKSON ATLANTA INTL (ATL)

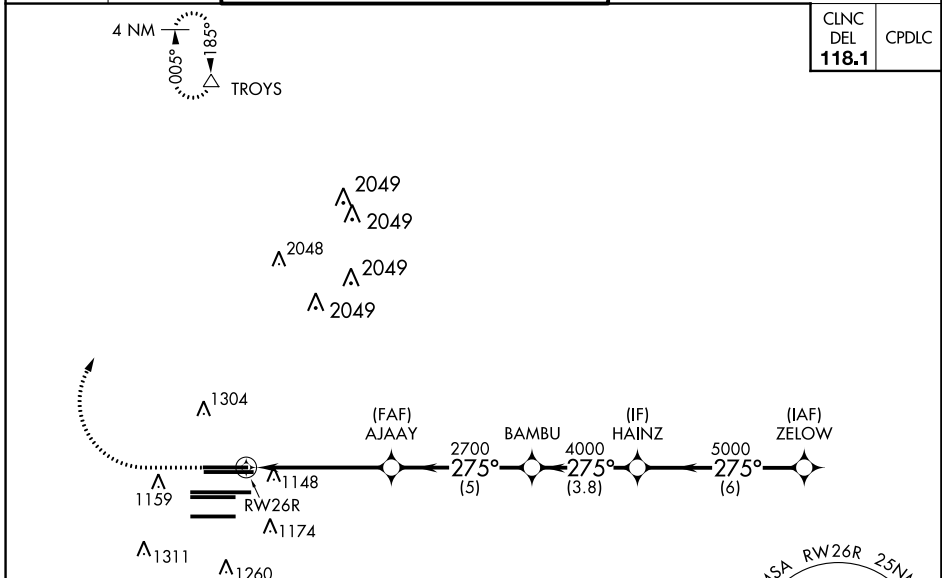
WAAS CH 61000 W26B	APP CRS 275°	Rwy Idg TDZE 990 Apt Elev 1026
--	------------------------	--

▼ For uncorrected Baro-VNAV systems, LNAV/VNAV NA below -7°C (20°F) or above 54°C (130°F). DME/DME RNP-0.3 NA. Simultaneous close parallel approach authorized with ILS PRM and RNAV PRM RWY 27R or 27L or 28, or Rwys 27R and 28, or Rwys 27L and 28. Use of FD or AP providing RNAV track guidance required during simultaneous operations. Dual VHF comm required. See additional requirements on AAUP.

MALSR

MISSED APPROACH: Climb to 1500 then climbing right turn to 3500 direct TROYS and hold.

D-ATIS ARR 119.65 DEP 125.55	ATLANTA APP CON 127.9 379.9	ATLANTA TOWER 8L-26R 8R-26L 9L-27R 9R-27L 10-28 119.1 125.325 123.85 119.3 119.5 254.4 PRM 126.9	ALL RWYS 121.9 121.75 121.65 254.4	GND CON (8L-26R,8R-26L) (9L-27R,9R-27L) 10-28 121.9 121.75 121.65 254.4	ALL RWYS
--	--	---	---	--	-------------



ELEV 1026	D	TDZE 990
-----------	----------	----------

RADAR REQUIRED

HIRL all Rwys
TDZ/CL RWYS 8L, 9R, 10, 26R,
27L and 28

1500	3500	TROYS	VGSI and RNAV glidepath not coincident (VGSI Angle 3.00/TCH 69).	HAINZ	ZELOW
AJAAY		BAMBU	HAINZ		ZELOW
2700		4000	5000		5000
RWY 26R		2700	275°		5000
5.2 NM		5 NM	3.8 NM	6 NM	
CATEGORY	A	B	C	D	
LPV DA	1190/18		200 (200-½)		
LNAV/VNAV DA	1426/50		436 (500-1)		
GP 3.00° TCH 55					

SE-4, 15 AUG 2019 to 12 SEP 2019

SE-4, 15 AUG 2019 to 12 SEP 2019