

ATLANTA, GEORGIA

AL-26 (FAA)

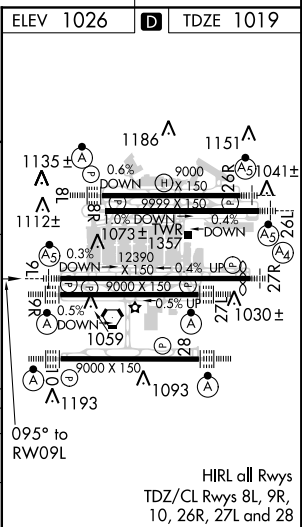
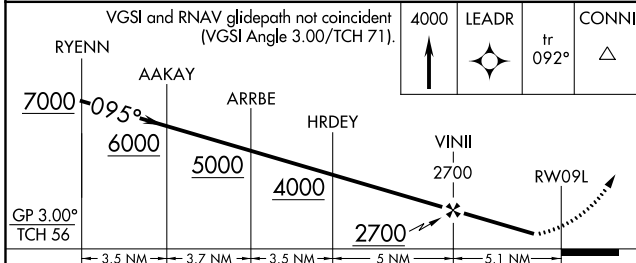
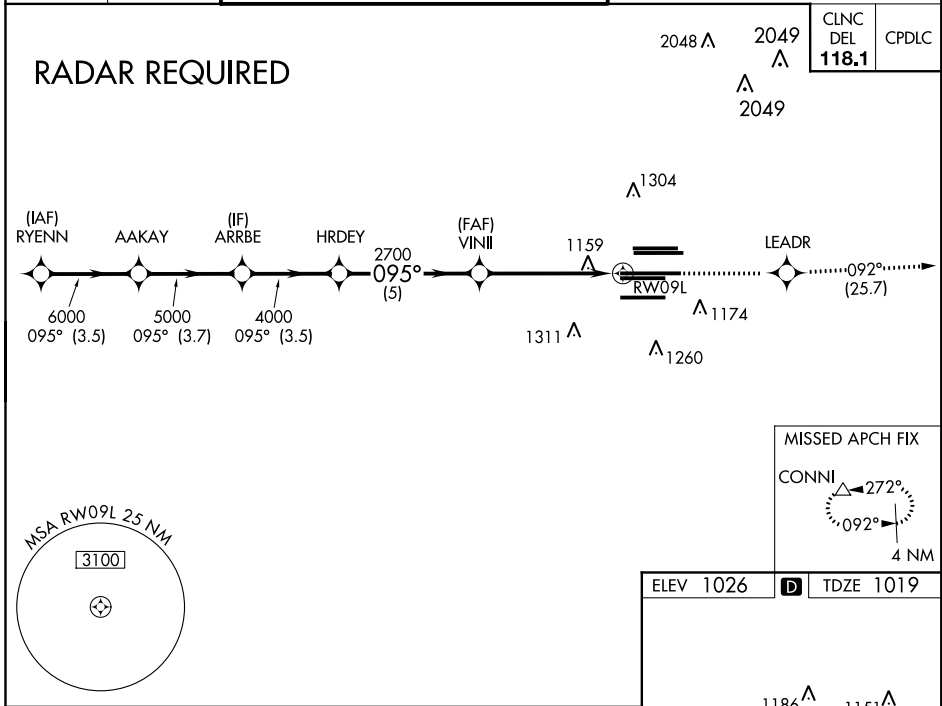
RNAV (GPS) PRM RWY 9L (SIMULTANEOUS CLOSE PARALLEL) HARTSFIELD-JACKSON ATLANTA INTL (ATL)

WAAS CH 62800 W09D	APP CRS 095°	Rwy Idg TDZE 1019 Apt Elev 1026
----------------------------------------	------------------------	-----------------------------------------------------

NA For uncompensated Baro-VNAV systems, LNAV/VNAV NA below -7°C (20°F) or above 54°C (130°F). DME/DME RNP-0.3 NA. Simultaneous Close Parallel Approach authorized with ILS PRM and RNAV PRM Rwy 8L or 8R or 10, or Rwy 8L and 10, or Rwy 8R and 10. Dual VHF Comm required. See additional requirements on AAUP. Use of FD or AP providing RNAV track guidance required during simultaneous operations. **RVR 1800 authorized with use of FD or AP or HUD to DA.

MALSR MISSED APPROACH: Climb to 4000 direct LEADR and on track 092° to CONNI and hold.

D-ATIS ARR 119.65 DEP 125.55	ATLANTA APP CON 127.9 379.9	ATLANTA TOWER ALL 8L-26R 8R-26L 9L-27R 9R-27L 10-28 RWYS 119.1 125.325 123.85 119.3 119.5 254.4 PRM 132.55	GND CON ALL (8L-26R,8R-26L) (9L-27R,9R-27L) 10-28 RWYS 121.9 121.75 121.65 254.4
--------------------------------------------------	---------------------------------------	-----------------------------------------------------------------------------------------------------------------------------------	-----------------------------------------------------------------------------------------------



CATEGORY	A	B	C	D
LPV DA **		1219/24	200 (200-1/2)	
LNAV/VNAV DA		1405/40	386 (400-3/4)	

ATLANTA, GEORGIA
Orig-B 120CT17

33°38'N-84°26'W

HARTSFIELD-JACKSON ATLANTA INTL (ATL)

RNAV (GPS) PRM RWY 9L (SIMULTANEOUS CLOSE PARALLEL)

SE-4, 15 AUG 2019 to 12 SEP 2019

SE-4, 15 AUG 2019 to 12 SEP 2019