

RNAV (GPS) PRM RWY 8R (SIMULTANEOUS CLOSE PARALLEL) HARTSFIELD-JACKSON ATLANTA INTL (ATL)

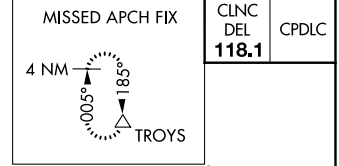
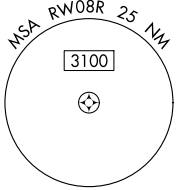
WAAS CH 48800 W08D	APP CRS 095°	Rwy Idg TDZE 1024 Apt Elev 1026	9999
--	------------------------	---	-------------

RNP APCH.

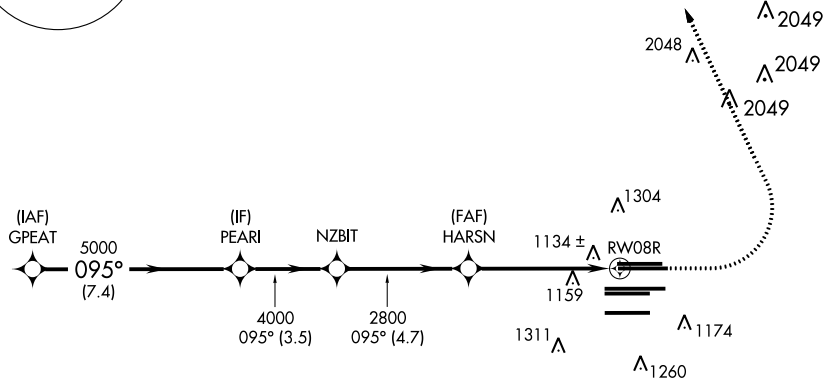
▼ For uncompensated Baro-VNAV systems, LNAV/VNAV NA below -7°C, or above 54°C.
 ▲ NA Simultaneous close parallel approach authorized with ILS PRM and RNAV PRM Rwy 9L or 9R or 10, or Rwys 9L and 10, or Rwys 9R and 10. See additional requirements on AAPP.
 Dual VHF comm required. Use of FD or AP providing RNAV track guidance required during simultaneous operations.

MISSED APPROACH: Climb to 1500 then climbing left turn to 3500 direct TROYS and hold.

D-ATIS ARR 119.65 DEP 125.55	ATLANTA APP CON 127.9 379.9	ATLANTA TOWER 8L-26R 8R-26L 9L-27R 9R-27L 10-28 RWYS 119.1 125.325 123.85 119.3 119.5 254.4 PRM 126.9	ALL RWYS (8L-26R, 8R-26L) (9L-27R, 9R-27L) 10-28 121.9 121.75 121.65 254.4	GND CON ALL RWYS
--	--	--	--	------------------------



CLNC DEL 118.1	CPDLC
-----------------------------	-------



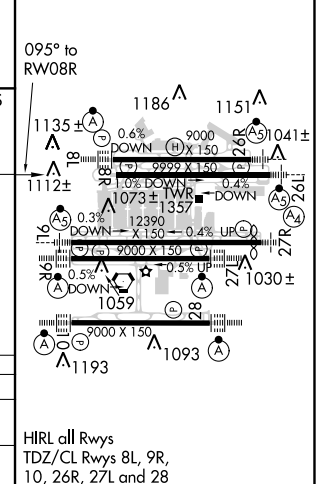
ELEV 1026	D TDZE 1024
-----------	--------------------

RADAR REQUIRED

VGSI and RNAV glidepath not coincident (VGSI Angle 3.00/TCH 67).

	1500	3500	TROYS
	↑	↙	△

GPEAT	PEARI	NZBIT	HARSN	RW08R
5000	5000	4000	2800	
7.4 NM	3.5 NM	4.7 NM	5.4 NM	
GP 3.00°	TCH 53			
CATEGORY	A	B	C	D
LPV DA	1282/40		258 (300-¾)	
LNAV/VNAV DA	1516-1⅓		492 (500-1⅓)	



RNAV (GPS) PRM RWY 8R (SIMULTANEOUS CLOSE PARALLEL)

SE-4, 15 AUG 2019 to 12 SEP 2019

SE-4, 15 AUG 2019 to 12 SEP 2019