

WAAS CH 62800 W09D	APP CRS 095°	Rwy Idg TDZE 1019 Apt Elev 1026
--	------------------------	---

RNAV (GPS) RWY 9L

HARTSFIELD-JACKSON ATLANTA INTL (ATL)

▽ For uncompensated Baro-VNAV systems, LNAV/VNAV NA below -7°C (20°F) or above 54°C (130°F). DME/DME RNP-0.3 NA. For Inop MALSR, increase LNAV Cats A and B visibility to RVR 5500. Helicopter visibility reduction below RVR 4000 NA. Simultaneous approach authorized with Rwy 8L or 8R or 10, or Rwy 8L and 10. LNAV procedure NA during simultaneous operations. Use of FD or AP providing RNAV track guidance required during simultaneous operations. **RVR 1800 authorized with use of FD or AP or HUD to DA.

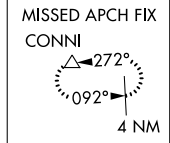
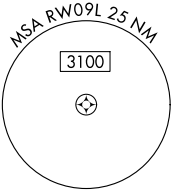
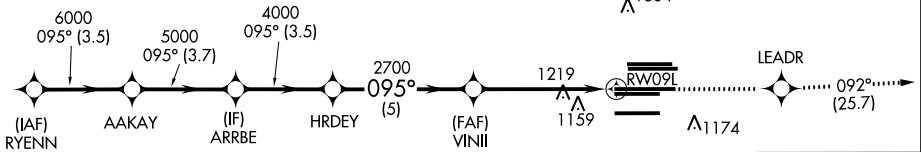


MISSED APPROACH: Climb to 4000 direct LEADR and on track 092° to CONNI and hold.

D-ATIS ARR 119.65	ATLANTA APP CON	ATLANTA TOWER					ALL RWYS	GND CON	ALL RWYS
DEP 125.55	127.9 379.9	119.1	125.325	123.85	119.3	119.5	121.9	121.75	121.65 254.4

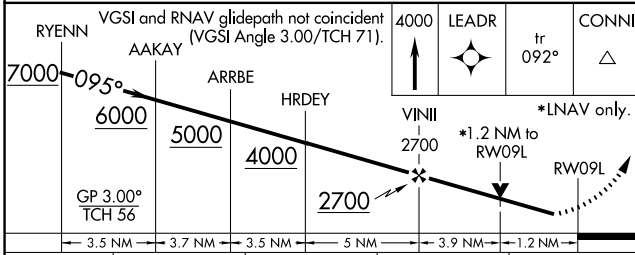
RADAR REQUIRED

2048 Δ	2049 Δ	CLNC DEL	CPDLC
	2049 Δ	118.1	

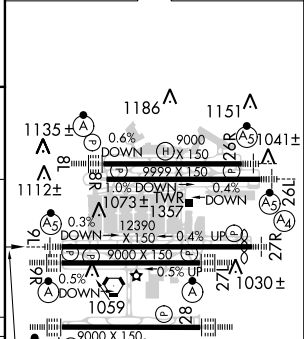


SE-4, 15 AUG 2019 to 12 SEP 2019

SE-4, 15 AUG 2019 to 12 SEP 2019



ELEV 1026	D	TDZE 1019
-----------	----------	-----------



CATEGORY	A	B	C	D
LPV DA **		1219/24	200 (200-½)	
LNAV/VNAV DA		1405/40	386 (400-¾)	
LNAV MDA	1480/40	461 (500-¾)	1480/50	461 (500-1)

095° to RWY 9L

HIRL all Rwys
TDZ/CL Rwys 8L, 9R, 10, 26R, 27L and 28