

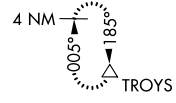
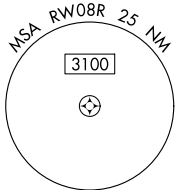
WAAS CH 48800 W08D	APP CRS 095°	Rwy Idg TDZE 1024 Apt Elev 1026	9999
--	------------------------	---	-------------

RNAV (GPS) RWY 8R

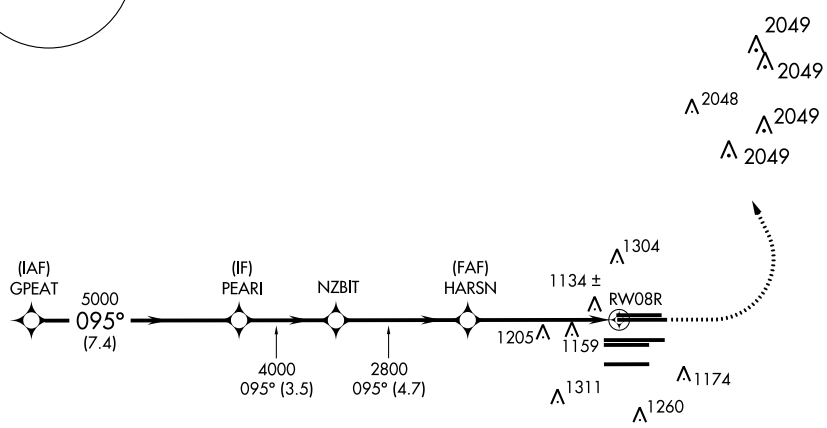
HARTSFIELD-JACKSON ATLANTA INTL (ATL)

RNP APCH.	For uncompensated Baro-VNAV systems, LNAV/VNAV NA below -7°C, or above 54°C. Simultaneous approach authorized with Rwy 9L or 9R or 10. LNAV procedure NA during simultaneous operations. Use of FD or AP providing RNAV track guidance required during simultaneous operations.	MISSED APPROACH: Climb to 1500 then climbing left turn to 3500 direct TROYS and hold.
-----------	---	---

D-ATIS ARR 119.65 DEP 125.55	ATLANTA APP CON 127.9 379.9	ATLANTA TOWER 8L-26R 8R-26L 9L-27R 9R-27L 10-28 RWYS 119.1 125.325 123.85 119.3 119.5 254.4 PRM 126.9	ALL RWYS 121.9	GND CON (8L-26R,8R-26L) (9L-27R,9R-27L) 10-28 121.75 121.65 254.4	ALL RWYS 121.9
--	--	--	-----------------------------	--	-----------------------------



CLNC DEL	CPDLC
118.1	



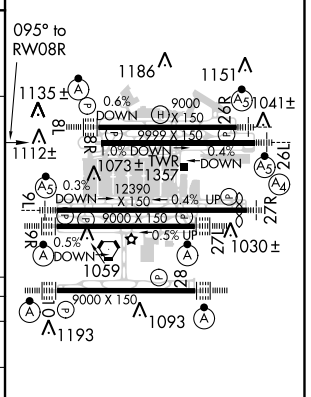
SE-4, 15 AUG 2019 to 12 SEP 2019

SE-4, 15 AUG 2019 to 12 SEP 2019

RADAR REQUIRED

ELEV	1026	TDZE	1024
------	------	------	------

VGS1 and RNAV glidepath not coincident (VGS1 Angle 3.00/TCH 67).				
GPEAT	PEAR1	NZBIT	HARSN	TROYS
5000	5000	4000	2800	1500 / 3500
GP 3.00° TCH 53		* LNAV only		
7.4 NM		3.5 NM	4.7 NM	4.2 NM
CATEGORY	A	B	C	D
LPV DA		1282/40	258 (300-¾)	
LNAV/VNAV DA		1516-1⅓	492 (500-1⅓)	
LNAV MDA	1480/55	456 (500-1)	1480-1⅓	456 (500-1⅓)



HIRL all Rwws
TDZ/CL Rwws 8L, 9R,
10, 26R, 27L and 28