


WAAS CH 65700 W27A	APP CRS 275°	Rwy Idg TDZE Apt Elev	8865 999 1026
--	------------------------	-----------------------------	--

RNAV (GPS) RWY 27L

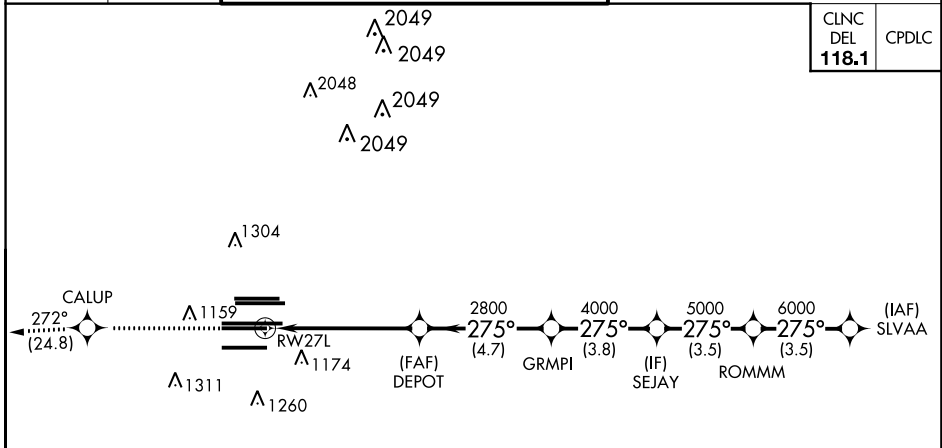
HARTSFIELD-JACKSON ATLANTA INTL (ATL)

▼ For uncompensated Baro-VNAV systems, LNAV/VNAV NA below -7°C (20°F) or above 54°C (130°F). DME/DME RNP-0.3 NA. Simultaneous approach authorized with Rwy 26R or 26L. LNAV procedure NA during simultaneous operations. Use of FD or AP providing RNAV track guidance required during simultaneous operations.

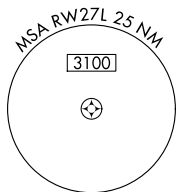
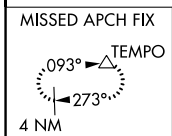
ALSF-2 

MISSED APPROACH: Climb to 4000 direct CALUP and on track 272° to TEMPO and hold.

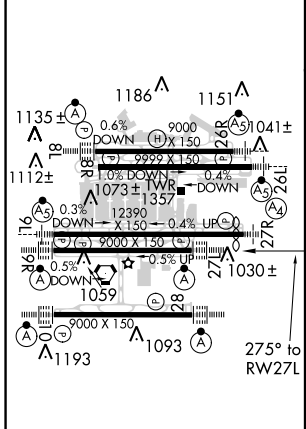
D-ATIS ARR 119.65	ATLANTA APP CON 127.9 379.9	ATLANTA TOWER				ALL RWYS	GND CON	ALL RWYS
DEP 125.55		8L-26R	8R-26L	9L-27R	9R-27L	10-28	(8L-26R,8R-26L) (9L-27R,9R-27L)	10-28
		119.1	125.325	123.85	119.3	119.5	121.9	121.75
					254.4			254.4



CLNC DEL	CPDLC
118.1	



ELEV 1026	D	TDZE 999
-----------	----------	----------



HIRL all Rwy
TDZ/CL Rwy 8L, 9R, 10, 26R,
27L and 28

RADAR REQUIRED

4000 CALUP tr 272° TEMPO

VGSI and RNAV glidepath not coincident (VGSI Angle 3.00/TCH 79).

SLVAA ROMMM SEJAY GRMPI DEPOT RWY 27L RWY 27R

*LNAV only

*1.7 NM to RWY 27L

7000 GP 3.00° TCH 58

CATEGORY	A	B	C	D
LPV DA	1199/18		200 (200-½)	
LNAV/VNAV DA	1528-1¾		529 (600-1¾)	
LNAV MDA	1620/24	621 (600-½)	1620-1¾	621 (600-1¾)

SE-4, 15 AUG 2019 to 12 SEP 2019

SE-4, 15 AUG 2019 to 12 SEP 2019