

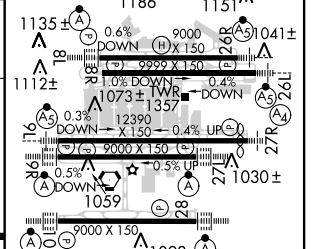
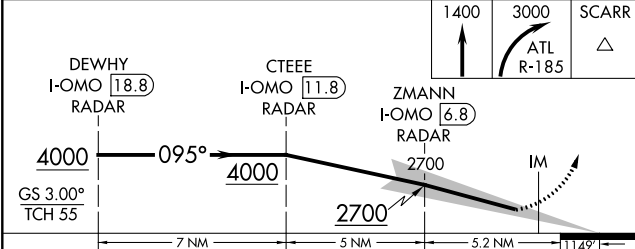
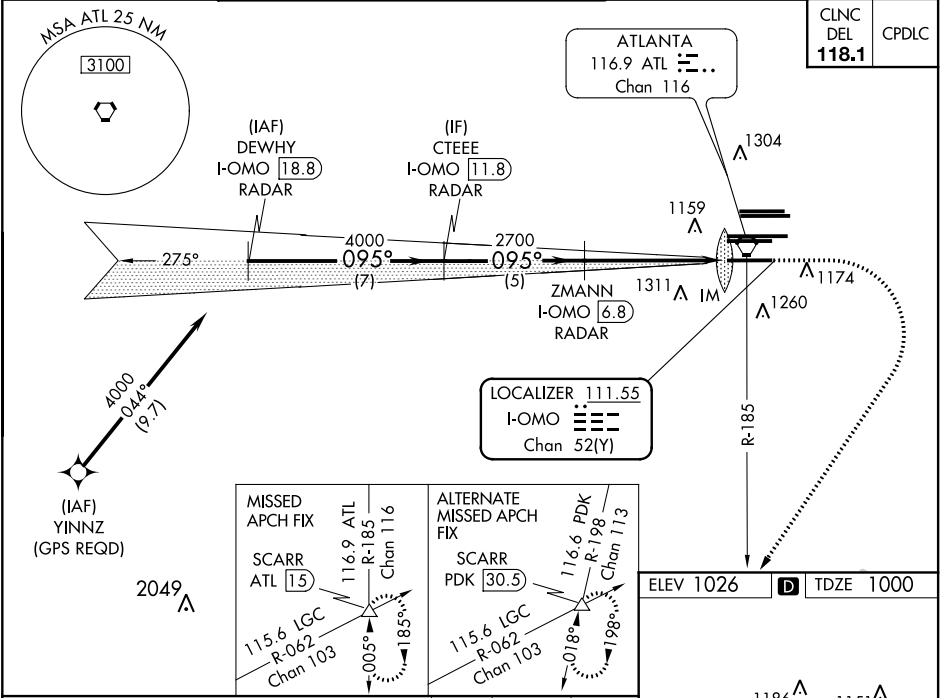
# ILS PRM RWY 10 (SA CAT I) (SIMULTANEOUS CLOSE PARALLEL) HARTSFIELD-JACKSON ATLANTA INTL (ATL)

LOC/DME I-OMO <b>111.55</b> Chan <b>52 (Y)</b>	APP CRS <b>095°</b>	Rwy Idg <b>9000</b> TDZE <b>1000</b> Apt Elev <b>1026</b>
------------------------------------------------------	------------------------	-----------------------------------------------------------------

**▼** DME or RADAR required. Simultaneous close parallel approach authorized with ILS PRM and RNAV PRM Rwy 8L or 8R or 9L or 9R, or Rwy 8L and 9L, or Rwy 8L and 9R, or Rwy 8R and 9L, or Rwy 8R and 9R. Procedure not authorized when glideslope not available. Dual VHF comm required. See additional requirements on AAUP. Localizer not suitable for electronic rollout guidance. Requires specific OPSPEC, MSPEC, or LOA approval and use of HUD to DH.

**ALSf-2**  
**(A)** MISSED APPROACH: Climb to 1400 then climbing right turn to 3000 on ATL VORTAC R-185 to SCARR INT/ATL 15 DME and hold.

D-ATIS ARR <b>119.65</b> DEP <b>125.55</b>	ATLANTA APP CON <b>127.9 379.9</b>	ATLANTA TOWER 8L-26R 8R-26L 9L-27R 9R-27L 10-28 RWYS <b>119.1 125.325 123.85 119.3 119.5 254.4</b> PRM <b>133.425</b>	ALL RWYS <b>121.9 121.75 121.65 254.4</b>
--------------------------------------------------	------------------------------------------	--------------------------------------------------------------------------------------------------------------------------------	-------------------------------------------------



CATEGORY	A	B	C	D
S-ILS 10	RA 180/14 150 DA 1150			

**SA CATEGORY I ILS - SPECIAL AIRCREW & AIRCRAFT CERTIFICATION REQUIRED**

HIRL all Rwy's  
TDZ/CL Rwy's 8L, 9R, 10, 26R, 27L and 28

SE-4, 15 AUG 2019 to 12 SEP 2019

SE-4, 15 AUG 2019 to 12 SEP 2019