

LOC/DME I-FUN 108.9 Chan 26	APP CRS 095°	Rwy Idg 9R 8925 9L 11730 TDZE 1026 1019 Apt Elev 1026 1026
---	------------------------	---

ILS RWY 9R (CAT II & III)

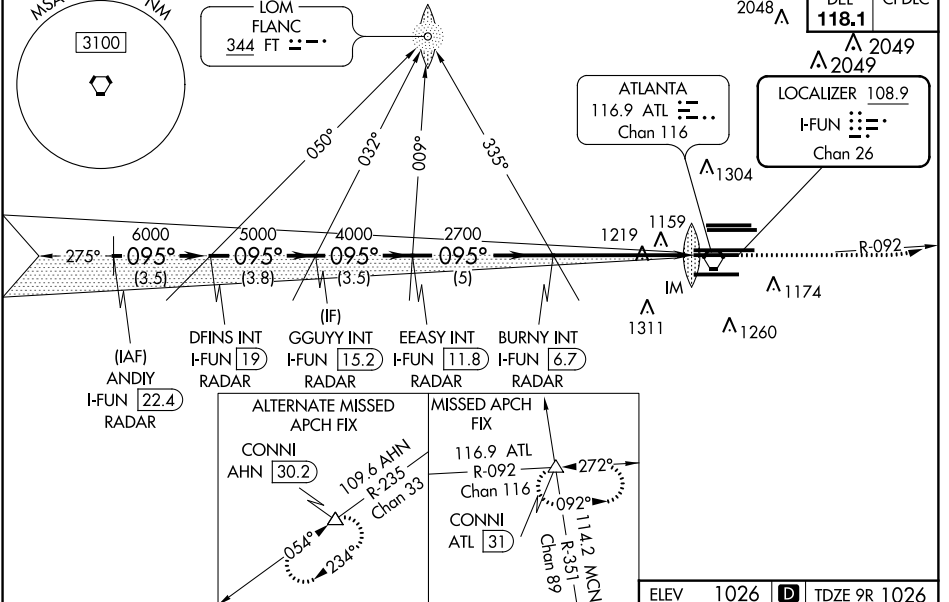
HARTSFIELD-JACKSON ATLANTA INTL (ATL)

▼ Inop table does not apply to Sidestep 9L for Cats A and B. ADF or DME or RADAR required.
Simultaneous approach authorized with Rwy 8L or 8R.

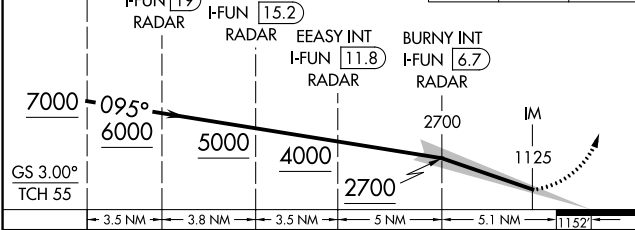
MISSED APPROACH: Climb to 1500 then climbing left turn to 4000 on ATL VORTAC R-092 to CONNI INT/ATL 31 DME and hold.

D-ATIS ARR 119.65	ATLANTA APP CON 127.9 379.9	ATLANTA TOWER 8L-26R 8R-26L 9L-27R 9R-27L 10-28 RWYS 119.1 125.325 123.85 119.3 119.5 254.4	ALL 254.4	GND CON 8L-26R,8R-26L 9L-27R,9R-27L 10-28 RWYS 121.9 121.75 121.65 254.4	ALL RWYS
-----------------------------	--	--	---------------------	---	-------------

RADAR REQUIRED



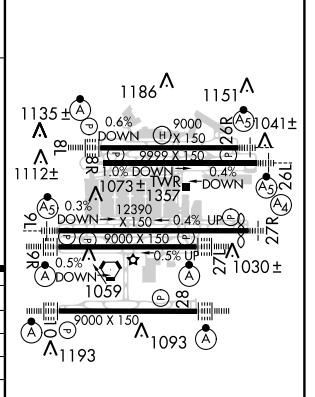
ANDY I-FUN **22.4** VGSI and ILS glidepath not coincident (VGSI Angle 3.00/TCH 70).
 1500 4000 CONNI
 ATL R-092



CATEGORY	A	B	C	D
S-ILS 9R	CAT II RA 118/12 100 DA 1126			
S-ILS 9R	CAT IIIa RVR 07			
S-ILS 9R	CAT IIIb RVR 03			
S-ILS 9R	CAT IIIc NA			

CATEGORY II & III ILS - SPECIAL AIRCREW & AIRCRAFT CERTIFICATION REQUIRED

ELEV 1026	TDZE 9R 1026	TDZE 9L 1019
-----------	--------------	--------------



HIRL all Rwys
TDZ/CL Rwys 8L,
9R, 10, 26R, 27L and 28

SE-4, 15 AUG 2019 to 12 SEP 2019

SE-4, 15 AUG 2019 to 12 SEP 2019