

LOC/DME I-OMO <b>111.55</b> Chan <b>52 (Y)</b>	APP CRS <b>095°</b>	Rwy Ldg <b>9000</b> TDZE <b>1000</b> Apt Elev <b>1026</b>
--	------------------------	---

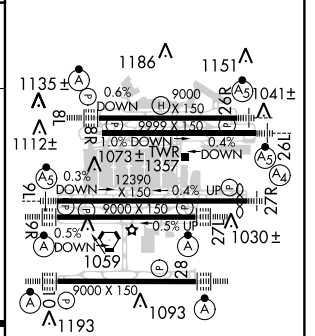
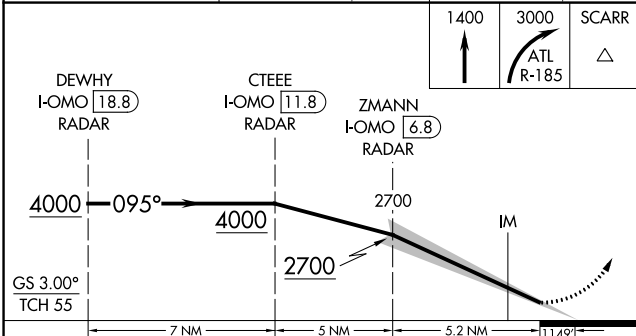
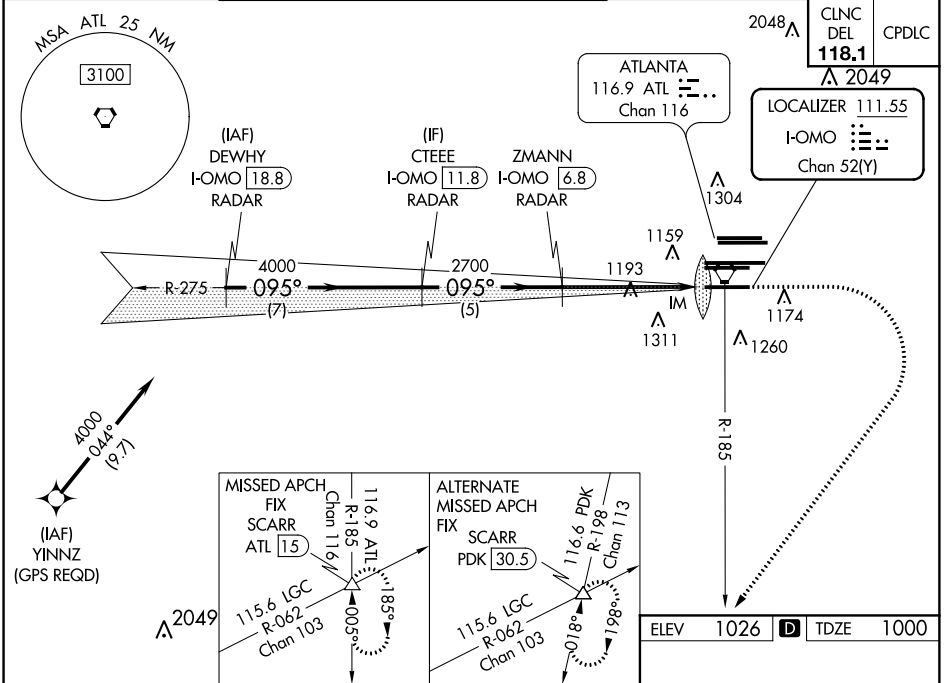
# ILS RWY 10 (SA CAT I)

HARTSFIELD-JACKSON ATLANTA INTL (ATL)

Simultaneous approach authorized with Rwy 9L or 8R or 8L, or Rwys 9L and 8L. DME or RADAR required. Requires specific OPSPEC, MSPEC, or LOA approval and use of HUD to DH.

ALSF-2 MISSED APPROACH: Climb to 1400 then climbing right turn to 3000 on ATL VORTAC R-185 to SCARR INT/ATL 15 DME and hold.

D-ATIS ARR <b>119.65</b>	ATLANTA APP CON DEP <b>127.9 379.9</b>	ATLANTA TOWER 8L-26R 8R-26L 9L-27R 9R-27L 10-28 RWYS DEP <b>119.1 125.325 123.85 119.3 119.5 254.4</b>	ALL RWYS DEP <b>121.9</b>	GND CON 8L-26R,8R-26L (9L-27R,9R-27L) 10-28 RWYS DEP <b>121.75 121.65 254.4</b>	ALL RWYS
-----------------------------	--	--	---------------------------------	---	-------------



CATEGORY	A	B	C	D
S-ILS 10	RA 180/14 150 DA 1150			
<b>SA CATEGORY I ILS - SPECIAL AIRCREW &amp; AIRCRAFT CERTIFICATION REQUIRED</b>				

HIRL all Rwys  
TDZ/CL Rwys 8L,  
9R, 10, 26R, 27L and 28

SE-4, 15 AUG 2019 to 12 SEP 2019

SE-4, 15 AUG 2019 to 12 SEP 2019