

WAAS CH <b>70439</b> <b>W17A</b>	APP CRS <b>170°</b>	Rwy Idg TDZE Apt Elev	<b>4500</b> <b>2086</b> <b>2086</b>
--	------------------------	-----------------------------	---

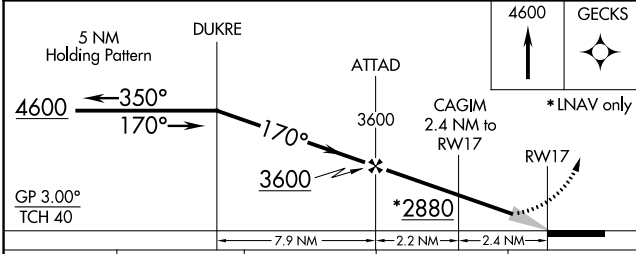
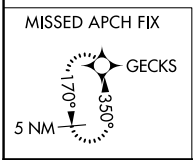
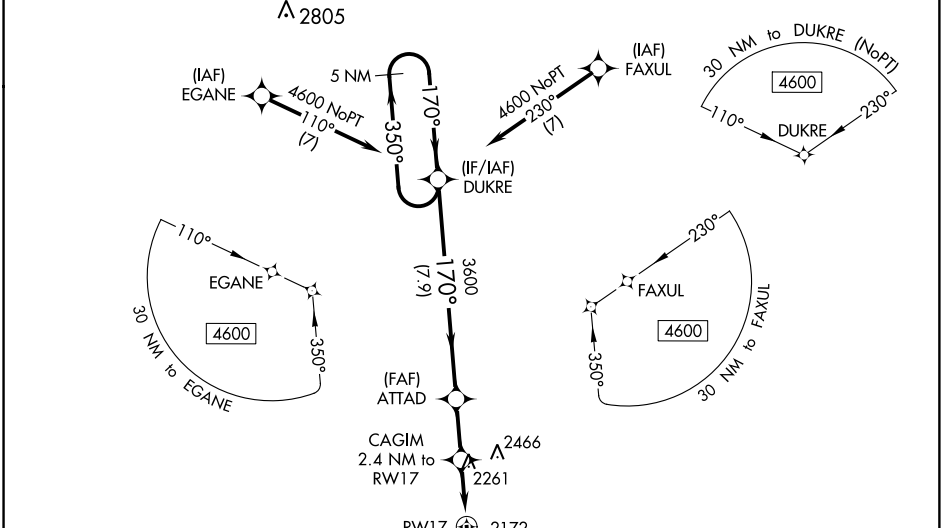
# RNAV (GPS) RWY 17

COMANCHE COUNTY (3K8)

**⚠** Baro-VNAV NA when using Pratt altimeter setting. DME/DME RNP-0.3 NA. When local altimeter setting not received, use Pratt altimeter setting and increase LPV and LNAV/VNAV DA to 2558; increase all MDA 120 feet; increase LPV and LNAV/VNAV all Cats visibility ¼ SM, increase LNAV Cat C visibility ¼ SM, and increase Circling Cat C visibility ½ SM.

MISSED APPROACH: Climb to 4600 direct GECKS and hold.

AWOS-3PT <b>118.05</b>	KANSAS CITY CENTER <b>126.95 379.2</b>	CTAF <b>122.9 0</b>
---------------------------	---	------------------------



ELEV 2086	TDZE 2086
<p>4500 X 60</p> <p>0.3% UP</p> <p>35</p>	
MIRL Rwy 17-35 0	
REIL Rws 17 and 35 0	

CATEGORY	A	B	C	D
LPV DA	2447-1 1/8 361 (400-1 1/8)			NA
LNAV/VNAV DA	2447-1 1/8 361 (400-1 1/8)			NA
LNAV MDA	2640-1	554 (600-1)	2640-1 1/8 554 (600-1 1/8)	NA
<b>C</b> CIRCLING	2640-1	554 (600-1)	2940-2 1/2 854 (900-2 1/2)	NA

NC-2, 18 JUL 2019 to 15 AUG 2019

NC-2, 18 JUL 2019 to 15 AUG 2019