

WAAS CH <b>77628</b> <b>W12A</b>	APP CRS <b>120°</b>	Rwy Idg <b>2990</b> TDZE <b>37</b> Apt Elev <b>38</b>
--	------------------------	---

# RNAV (GPS) RWY 12

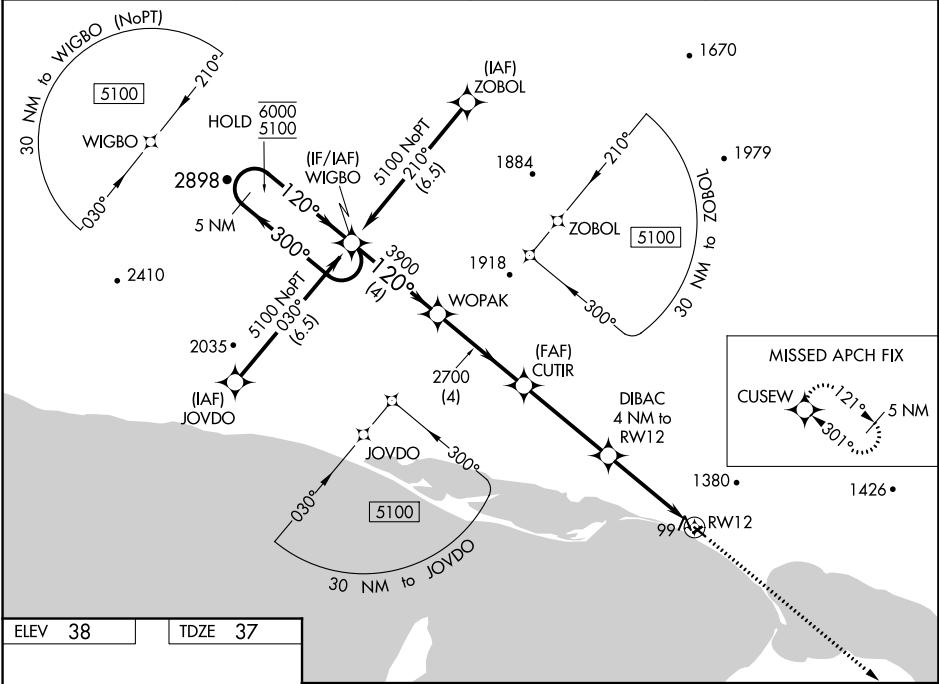
BREVIG MISSION (KTS)(P/FKT)

RNP APCH.

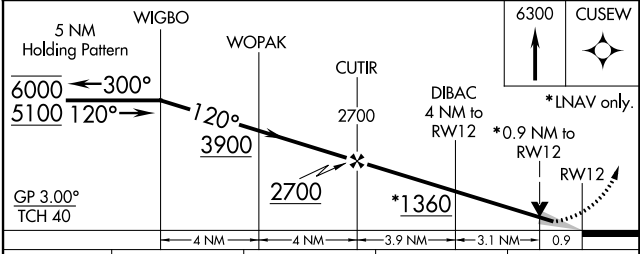
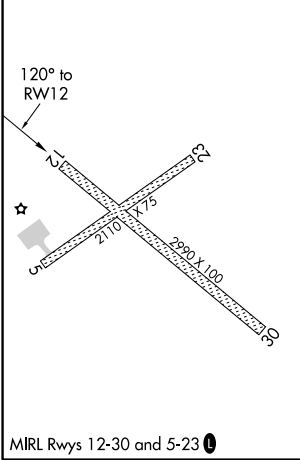
**V** Circling NA north of Rws 12 and 23. Circling Rwy 23 NA at night.  
**38** -26°C For uncompensated Baro-VNAV systems, LNAV/VNAV NA below -25° C or above 54°C.

MISSED APPROACH: Climb to 6300 direct CUSEW and hold, continue climb-in-hold to 6300.

AWOS-3 <b>121.55</b>	ANCHORAGE CENTER <b>133.3 290.4</b>	NOME RADIO <b>135.6</b>	CTAF <b>123.0</b>
-------------------------	--	----------------------------	----------------------



ELEV 38	TDZE 37
---------	---------



CATEGORY	A	B	C	D
LPV DA	287-1	250 (300-1)		NA
LNAV/VNAV DA	287-1	250 (300-1)		NA
LNAV MDA	360-1	323 (400-1)		NA
<b>C</b> CIRCLING	620-1 582 (600-1)	1460-1½ 1422 (1500-1½)		NA

AK, 20 JUN 2019 to 15 AUG 2019

AK, 20 JUN 2019 to 15 AUG 2019