

APP CRS	Rwy Idg	3220
200°	TDZE	47
	Apt Elev	47

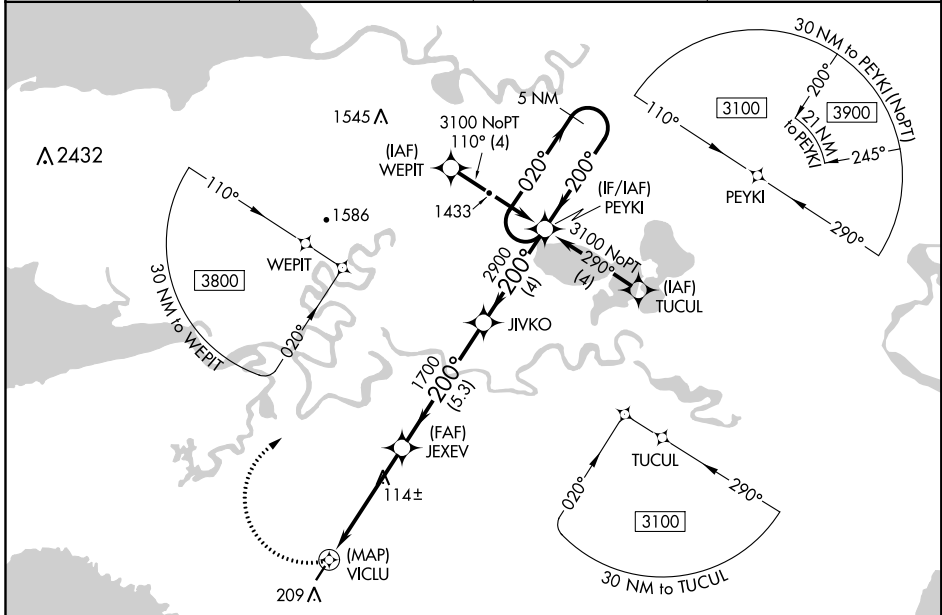
RNAV (GPS) RWY 20

CHEVAK (VAK)(PAVA)

▽ DME/DME RNP-0.3 NA.
▲ When local altimeter setting not received, use Hooper Bay altimeter setting and increase all MDA 60 feet.

MISSED APPROACH: Climbing right turn to 3100 direct PEYKI and hold.

AWOS-3 123.625	ANCHORAGE CENTER 124.5	UNICOM 122.8	CTAF 123.0
--------------------------	----------------------------------	------------------------	----------------------



AK, 20 JUN 2019 to 15 AUG 2019

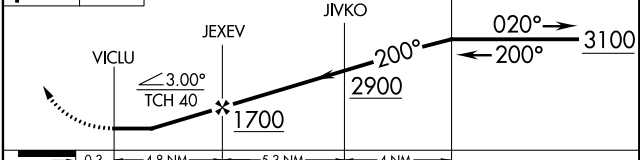
AK, 20 JUN 2019 to 15 AUG 2019

ELEV 47	TDZE 47
----------------	----------------

MRL Rwy 2-20
 REIL Rwy 2 and 20

Diagram showing runway 20 with MRL and REIL systems. The runway length is 3220/1735. The diagram also shows a 139 A marker.

3100 PEYKI VGSi and descent angles not coincident (VGSi Angle 3.00/TCH 25). 5 NM Holding Pattern



CATEGORY	A	B	C	D
LNAV MDA	460-1	413 (500-1)	NA	
CIRCLING	520-1	473 (500-1)	NA	