

| | | |
|-------------|----------|-------------|
| APP CRS | Rwy ldg | 5005 |
| 168° | TDZE | 389 |
| | Apt Elev | 389 |

RNAV (GPS) RWY 17

TURNER COUNTY (75J)

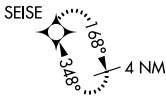
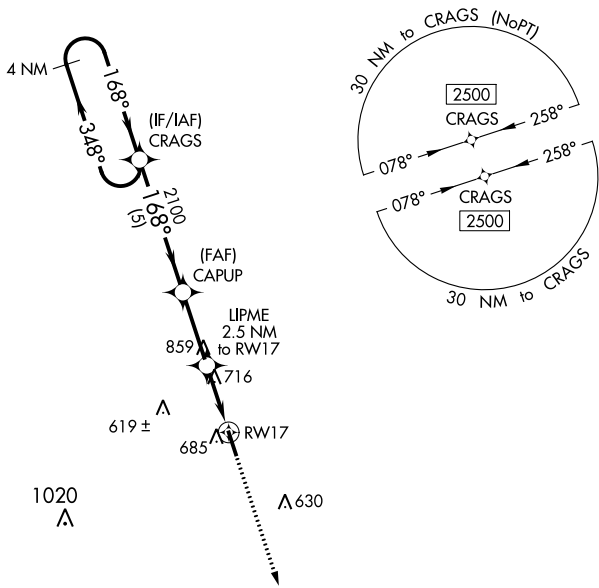
▽ Rwy 17 helicopter visibility reduction below 1 SM NA.
▲ NA DME/DME RNP-0.3 NA.
 When Fitzgerald altimeter setting not received, procedure NA.
 Procedure NA at night.

MISSED APPROACH: Climb to 2500
 direct SEISE and hold.

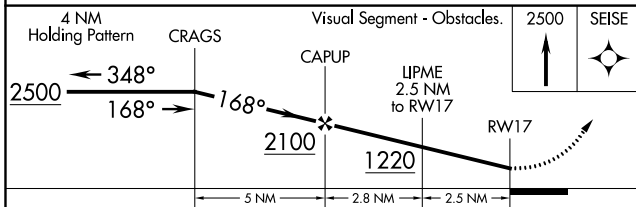
FITZGERALD MUNI AWOS-3
118.625

JACKSONVILLE CENTER
125.75 363.075

UNICOM
122.7 (CTAF) ①



| | | | |
|------------------|------------|------|------------|
| ELEV | 389 | TDZE | 389 |
| | | | |
| MIRL Rwy 17-35 ① | | | |



| | | | | |
|-------------------|--------|-------------|--|--|
| CATEGORY | A | B | C | D |
| LNAV MDA | 1080-1 | 691 (700-1) | 1080-2 | 691 (700-2) |
| C CIRCLING | 1100-1 | 711 (800-1) | 1140-2 ³ / ₄ 751 (800-2 ³ / ₄) | 1260-2 ³ / ₄ 871 (900-2 ³ / ₄) |

SE-4, 18 JUL 2019 to 15 AUG 2019

SE-4, 18 JUL 2019 to 15 AUG 2019