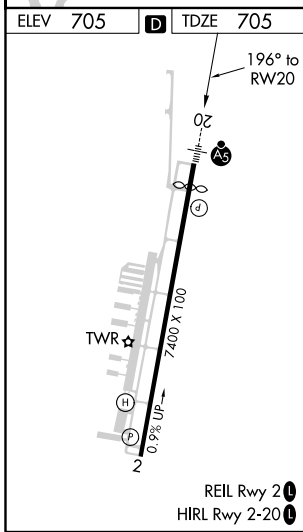
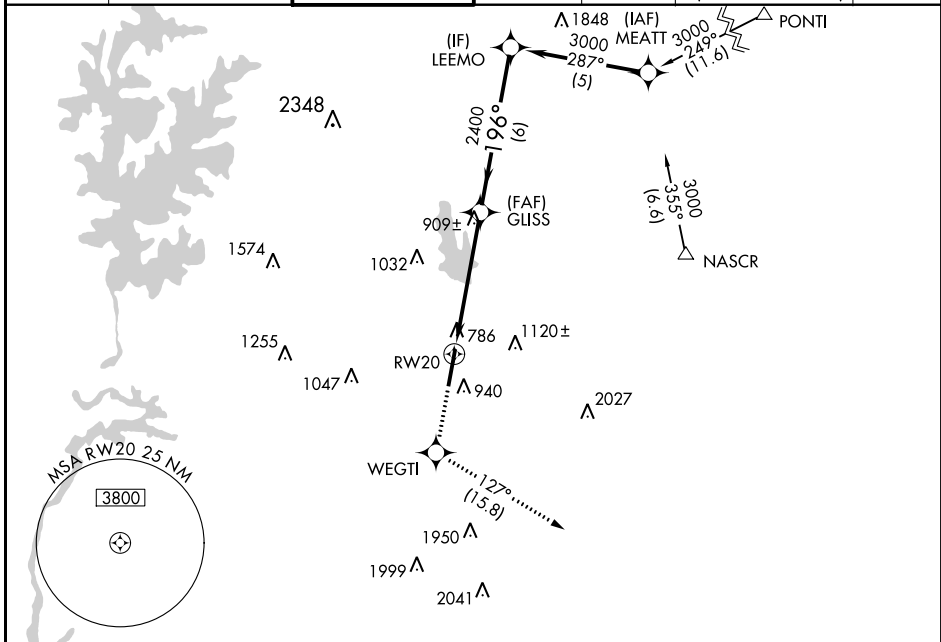


WAAS CH 56499 W20A	APP CRS 196°	Rwy Idg TDZE Apt Elev	6350 705 705
----------------------------------------	------------------------	-----------------------------	-----------------------------------------

RNAV (GPS) RWY 20

CONCORD-PADGETT RGNL (JQF)

RNP APCH.		MALSR		MISSED APPROACH: Climb to 3000 direct WEGTI and on track 127° to LOCAS and hold.		
<p>V For uncompensated Baro-VNAV systems, LNAV/VNAV NA below -16°C or above 54°C. For inop ALS, increase LNAV/VNAV visibility all Cats to 1½ SM.</p>		<p>A5</p>				
ATIS * 133.675	CHARLOTTE APP CON 128.32 307.8	CONCORD TOWER * 134.65 (CTAF)	GND CON 121.85	CLNC DEL 118.55	CHARLOTTE CLNC DEL 127.25 (when tower closed)	UNICOM 122.95



ELEV 705	D	TDZE 705				
3000	WEGTI	LOCAS	VGSI and RNAV glidepath not coincident (VGSI Angle 3.00/TCH 38). LEEMO			
	↑	↑	GLISS			
*LNAV only.			*1.8 NM to RWY 20			
			GP 3.00° TCH 44			
CATEGORY	A	B	C	D		
LPV DA	955-1½ 250 (300-1½)					
LNAV/VNAV DA	1222-1¼ 517 (600-1¼)					
LNAV MDA	1300-1½	595 (600-1½)	1300-1¼	595 (600-1¼)		
C CIRCLING	1300-1	595 (600-1)	1480-2¼ 775 (800-2¼)	1480-2 ½ 775 (800-2 ½)		

SE-2: 18 JUL 2019 to 15 AUG 2019

SE-2: 18 JUL 2019 to 15 AUG 2019