

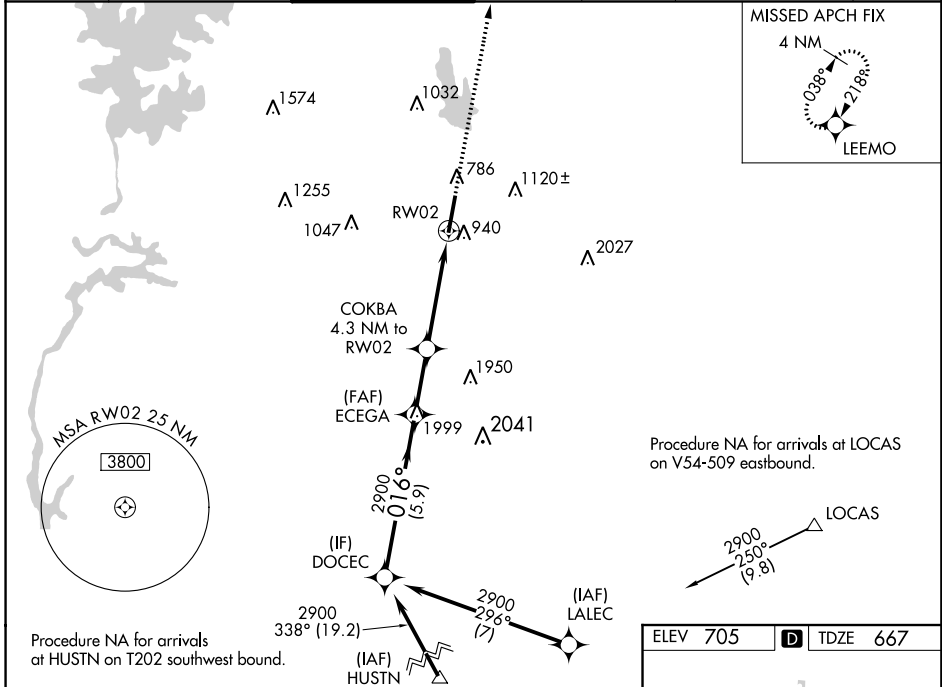
WAAS CH <b>93903</b> <b>W02A</b>	APP CRS <b>016°</b>	Rwy Idg TDZE Apt Elev	<b>7400</b> <b>667</b> <b>705</b>
--	------------------------	-----------------------------	---

# RNAV (GPS) RWY 2

CONCORD-PADGETT RGNL (JQF)

RNP APCH.		MISSED APPROACH: Climb to 4000 direct LEEMO and hold, continue climb-in-hold to 4000.	
<p><b>▽</b> Rwy 2 helicopter visibility reduction below 3/4 SM NA.</p> <p><b>▲</b> For uncompensated Baro-VNAV systems, LNAV/VNAV NA below -16°C or above 45°C.</p>			

ATIS * <b>133.675</b>	CHARLOTTE APP CON <b>128.32 307.8</b>	CONCORD TOWER * <b>134.65 (CTAF) 0</b>	GND CON <b>121.85</b>	CLNC DEL <b>118.55</b>	CHARLOTTE CLNC DEL <b>127.25</b> (when tower closed)	UNICOM <b>122.95</b>
--------------------------	--	---	--------------------------	---------------------------	--	-------------------------



SE-2. 18 JUL 2019 to 15 AUG 2019

SE-2. 18 JUL 2019 to 15 AUG 2019

VGSI and RNAV glidepath not coincident (VGSI Angle 3.50/TCH 69).

DOCEC	ECEGA	COKBA	RW02
2900	2900	4.3 NM to RW02	*1.4 NM to RW02
GP 3.10° TCH 60	*2100		
5.9 NM	2.4 NM	2.9 NM	1.4 NM

CATEGORY	A	B	C	D
LPV DA		986-1 1/8	319 (300-1 1/8)	
LNAV/VNAV DA		1220-1 1/8	553 (600-1 1/8)	
LNAV MDA	1240-1	573 (600-1)	1240-1 1/8	573 (600-1 1/8)
<b>C</b> CIRCLING	1300-1	595 (600-1)	1480-2 1/4 775 (800-2 1/4)	1480-2 1/2 775 (800-2 1/2)

4000 LEEMO  
\*LNAV only.

