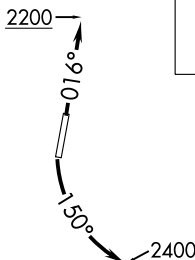


KWEEN FOUR DEPARTURE (RNAV)

ATIS ★
 133.675
 CLNC DEL
 118.55 127.25
 CHARLOTTE CLNC DEL
 127.25 (when tower closed)
 GND CON
 121.85
 CONCORD TOWER ★
 134.65 (CTAF)
 UNICOM
 122.95
 CHARLOTTE DEP CON
 128.325 307.8



**TOP ALTITUDE:
3000**

TAKEOFF MINIMUMS

Rwy 2: Standard.
 Rwy 20: Standard with minimum
 climb of 320' per NM to 2400.

- NOTE: For turbojets only.
- NOTE: DME/DME/IRU or GPS required.
- NOTE: RNAV 1.
- NOTE: RADAR required.
- NOTE: If unable to accept climb rates,
advise ATC on initial contact.
- NOTE: Upon reaching 10000 MSL, accelerate to
and maintain 280K, if unable advise ATC.
- NOTE: Transponder code will be issued via PDC
or Charlotte CLNC DEL.

NOTE: Chart not to scale.

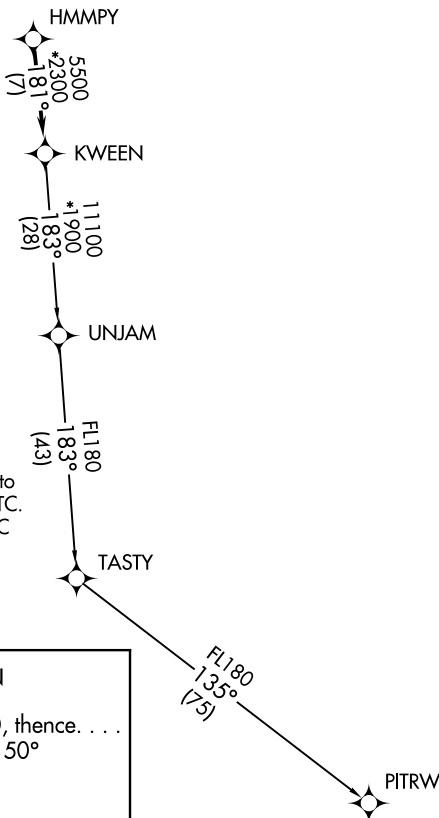
DEPARTURE ROUTE DESCRIPTION

TAKEOFF RWY 2: Climb heading 016° to 2200, thence. . . .

TAKEOFF RWY 20: Climbing left turn heading 150°
to 2400, thence. . . .

. . . .on heading assigned by ATC, expect RADAR vectors
to HMMPY, then on track 181° to KWEEN, then on
assigned transition, maintain 3000, expect filed altitude
within 10 minutes after departure.

PITRW TRANSITION (KWEEN4.PITRW)
UNJAM TRANSITION (KWEEN4.UNJAM)



SE-2: 18 JUL 2019 to 15 AUG 2019

SE-2: 18 JUL 2019 to 15 AUG 2019