

KNIGHTS TWO DEPARTURE

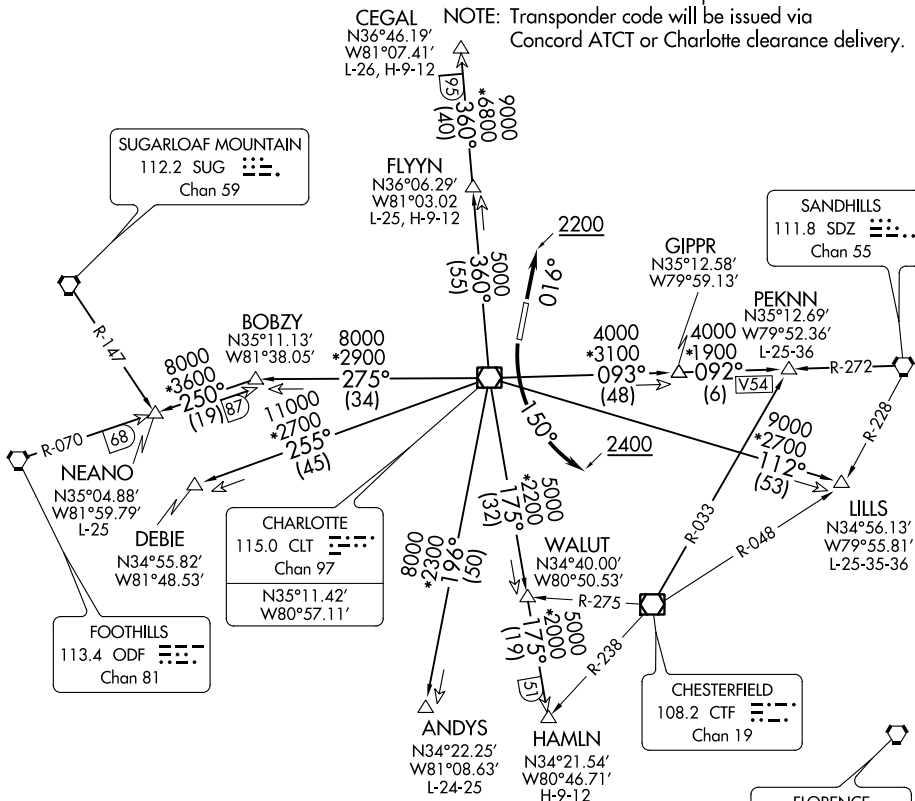
**TOP ALTITUDE:
3000**

ATIS ★
133.675
CLNC DEL
118.55
CHARLOTTE CLNC DEL
127.25 (when tower closed)
GND CON
121.85
CONCORD TOWER ★
134.65 (CTAF)
UNICOM
122.95
CHARLOTTE DEP CON
128.325 307.8

TAKEOFF MINIMUMS

Rwy 2: Standard.
Rwy 20: 300-1¼ or standard with minimum climb of 204' per NM to 1000.
Or alternatively, with standard takeoff minimums and a normal 200' per NM climb gradient, takeoff must occur no later than 1200' prior to DER.

NOTE: For propeller aircraft only.
NOTE: RADAR and DME required.
NOTE: Turboprops: Operate in a manner that will result in best forward speed and climb rate.
NOTE: Transponder code will be issued via Concord ATCT or Charlotte clearance delivery.



SE-2, 18 JUL 2019 to 15 AUG 2019

SE-2, 18 JUL 2019 to 15 AUG 2019

- ANDYS TRANSITION: Expect vectors to intercept CLT R-196 to ANDYS.
- CEGAL TRANSITION: Expect vectors to intercept CLT R-360 to CEGAL.
- DEBIE TRANSITION: Expect vectors to intercept CLT R-255 to DEBIE.
- FLYYN TRANSITION: Expect vectors to intercept CLT R-360 to FLYYN.
- HAMLIN TRANSITION: Expect vectors to intercept CLT R-175 to HAMLIN.
- LILLS TRANSITION: Expect vectors to intercept CLT R-112 to LILLS.
- NEANO TRANSITION: Expect vectors to intercept CLT R-275 to BOBZY then ODF R-070 to NEANO.
- PEKNN TRANSITION: Expect vectors to intercept CLT R-093 to GIPPR then SDZ R-272 to PEKNN.

(NARRATIVE ON FOLLOWING PAGE)

NOTE: Chart not to scale.

KNIGHTS TWO DEPARTURE