

KERMIT THREE DEPARTURE

**TOP ALTITUDE:
3000**

ATIS*
133.675
CLNC DEL
118.55
CHARLOTTE CLNC DEL
127.25 (when tower closed)
GND CON
121.85
CONCORD TOWER*
134.65 (CTAF)
UNICOM
122.95
CHARLOTTE DEP CON
128.325 307.8

PULASKI
116.8 PSK
Chan 115
N37°05.26'
W80°42.77'

NALEY
N36°21.16'
W80°48.41'

BARRETTS MOUNTAIN
110.8 BZM
Chan 45

SUGARLOAF MOUNTAIN
112.2 SUG
Chan 59

CHARLOTTE
115.0 CLT
Chan 97
N35°11.42'
W80°57.11'

RALEIGH/DURHAM
117.2 RDU
Chan 119

BOBZY
N35°11.13'
W81°38.05'
8000
2900

NEANO
N35°04.88'
W81°59.79'
L-25

DEBIE
N34°55.82'
W81°48.53'

FOOTHILLS
113.4 ODF
Chan 81

ANDYS
N34°22.25'
W81°08.63'
L-24-25

HAMLN
N34°21.54'
W80°46.71'
H-12

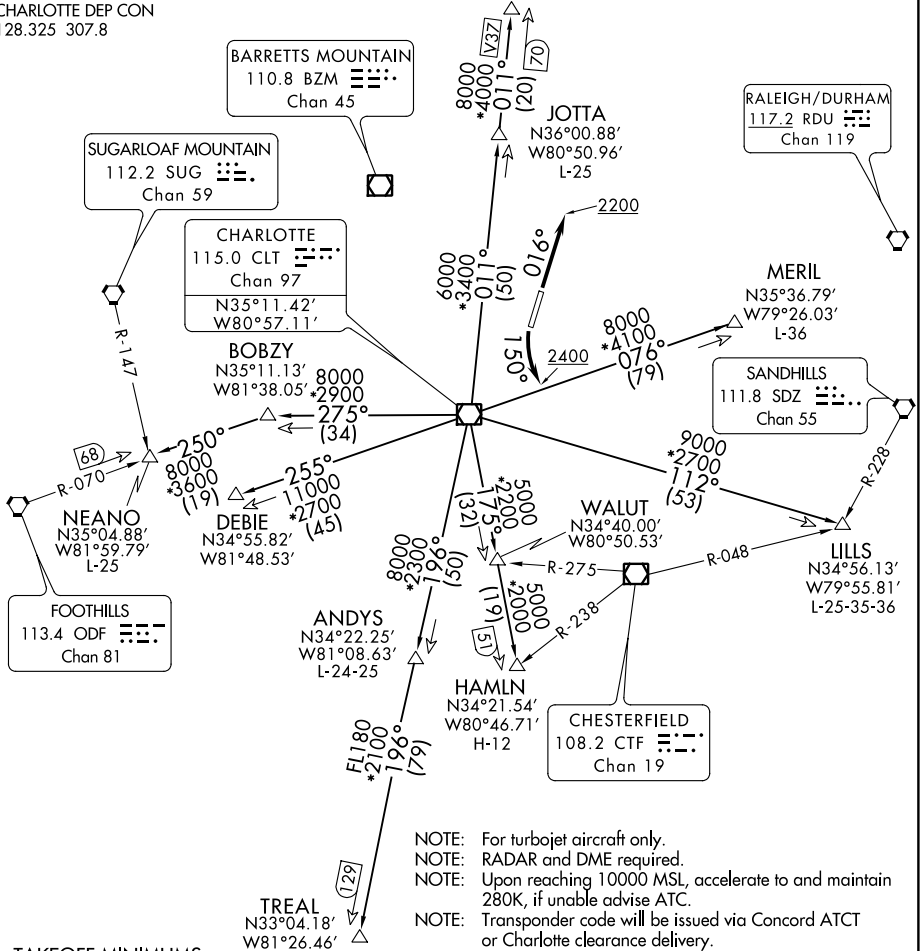
WALUT
N34°40.00'
W80°50.53'

CHESTERFIELD
108.2 CTF
Chan 19

MERIL
N35°36.79'
W79°26.03'
L-36

SANDHILLS
111.8 SDZ
Chan 55

LILLS
N34°56.13'
W79°55.81'
L-25-35-36



- NOTE: For turbojet aircraft only.
- NOTE: RADAR and DME required.
- NOTE: Upon reaching 10000 MSL, accelerate to and maintain 280K, if unable advise ATC.
- NOTE: Transponder code will be issued via Concord ATCT or Charlotte clearance delivery.

TAKEOFF MINIMUMS

Rwy 2: Standard.
Rwy 20: 300-1¾ or standard with minimum climb of 204' per NM to 1000.
Or alternatively, with standard takeoff minimums and a normal 200' per NM climb gradient, takeoff must occur no later than 1200' prior to DER.

(NARRATIVE ON FOLLOWING PAGE)

NOTE: Chart not to scale.

SE-2, 18 JUL 2019 to 15 AUG 2019

SE-2, 18 JUL 2019 to 15 AUG 2019