

WAAS CH 69303 W36A	APP CRS 360°	Rwy ldg TDZE Apt Elev	5000 1301 1314
--	------------------------	-----------------------------	---

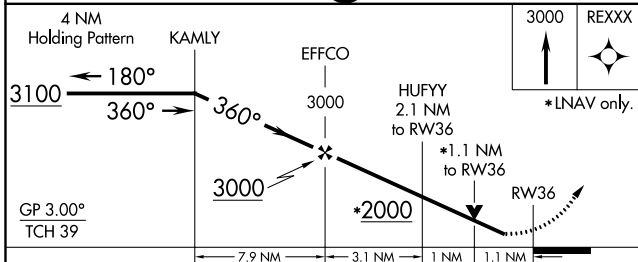
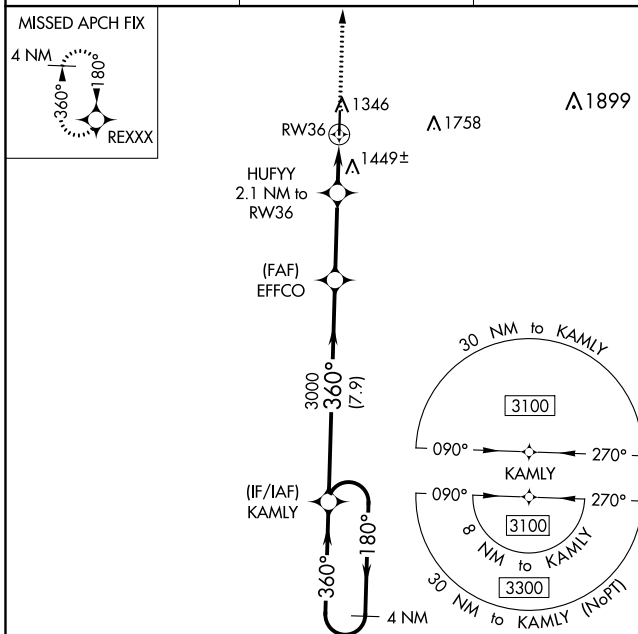
RNAV (GPS) RWY 36

MONETT RGNL (HFJ)

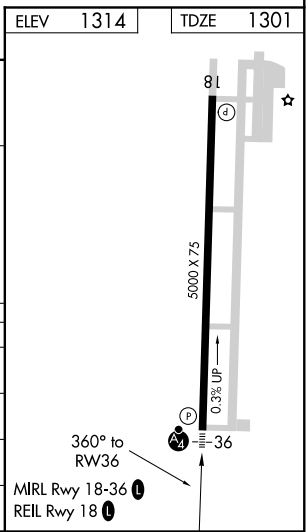
⚠ For uncompensated Baro-VNAV systems, LNAV/VNAV NA below -17°C (2°F) or above 54°C (130°F). When local altimeter setting not received, use Joplin Rgnl altimeter setting; increase all DA 111 feet and all MDA 120 feet; increase LPV and LNAV/VNAV all Cats and LNAV Cat C visibilities ¼ mile and Circling Cat C visibility ½ mile. DME/DME RNP-0.3 NA. Baro-VNAV and VDP NA when using Joplin Rgnl altimeter setting. Helicopter visibility reduction below ¾ SM NA.

MALSF ⊕	MISSED APPROACH: Climb to 3000 direct REXXX and hold.
------------	--

AWOS-3 118.275	SPRINGFIELD APP CON 124.95 318.2	CLNC DEL 121.85	UNICOM 123.075 (CTAF)
--------------------------	--	---------------------------	---------------------------------



CATEGORY	A	B	C	D
LPV DA	1551-¾	250 (300-¾)		NA
LNAV/VNAV DA	1551-¾	250 (300-¾)		NA
LNAV MDA	1700-¾	399 (400-¾)	1700-1 399 (400-1)	NA
C CIRCLING	1760-1 446 (500-1)	1900-1 586 (600-1)	1900-1½ 586 (600-1½)	NA



NC-3, 18 JUL 2019 to 15 AUG 2019

NC-3, 18 JUL 2019 to 15 AUG 2019