

WAAS CH <b>53403</b> <b>W18A</b>	APP CRS <b>180°</b>	Rwy Idg TDZE Apt Elev	<b>5000</b> <b>1314</b> <b>1314</b>
--	------------------------	-----------------------------	---

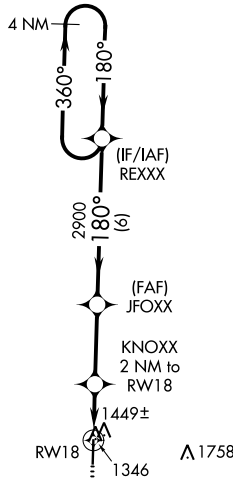
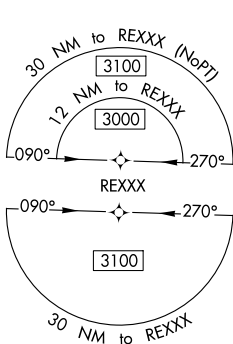
# RNAV (GPS) RWY 18

MONETT RGNL (HFJ)

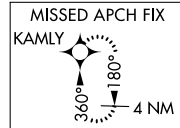
**▼** Baro-VNAV NA when using Joplin Rgnl altimeter setting. For uncompensated Baro-VNAV systems, LNAV/VNAV NA below -17°C (2°F) or above 54°C (130°F). When local altimeter setting not received, **▲** use Joplin Rgnl altimeter setting: increase all DA 111 feet and all MDA 120 feet; increase LPV visibility All Cats to 1¼; LNAV/VNAV all Cats and LNAV Cats C visibility to 1¾ and Circling Cat C visibility to 2. DME/DME RNP-0.3 NA.

**MISSED APPROACH:** Climb to 3100 direct KAMLY and hold.

AWOS-3 <b>118.275</b>	SPRINGFIELD APP CON <b>124.95 318.2</b>	CLNC DEL <b>121.85</b>	UNICOM <b>123.075 (CTAF) ①</b>
--------------------------	--	---------------------------	-----------------------------------



▲ 1899

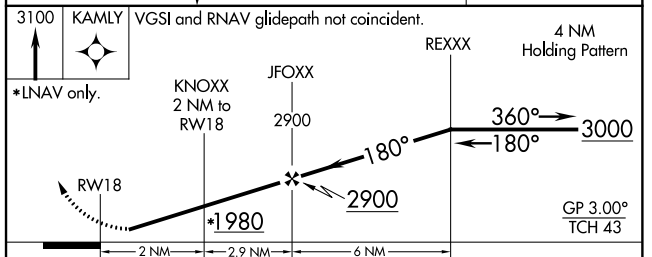


NC-3, 18 JUL 2019 to 15 AUG 2019

NC-3, 18 JUL 2019 to 15 AUG 2019

ELEV 1314	TDZE 1314
-----------	-----------

MIRL Rwy 18-36 ①  
REIL Rwy 18 ①



CATEGORY	A	B	C	D
LPV DA	1564-¾	250 (300-¾)	1564-1 250 (300-1)	NA
LNAV/VNAV DA	1619-1 305 (400-1)			NA
LNAV MDA	1700-1 386 (400-1)			NA
<b>C</b> CIRCLING	1760-1 446 (500-1)	1900-1 586 (600-1)	1900-1½ 586 (600-1½)	NA