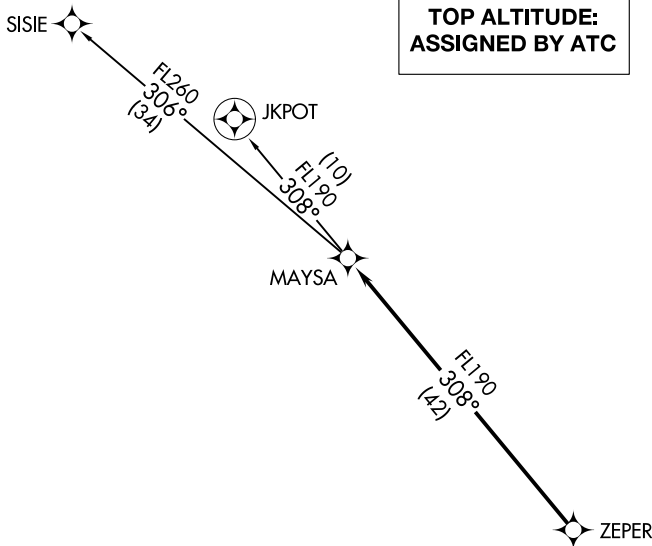


(MAYSA6.MAYSA) 18144

MAYSA SIX DEPARTURE (RNAV)

AL-6915 (FAA)

GLENDALE MUNI (G^EU)
GLENDALE, ARIZONA



**TOP ALTITUDE:
ASSIGNED BY ATC**

ATIS
 119.425
 GND CON
 118.0
 GLENDALE TOWER *
 121.0
 LUKE DEP CON *
 118.15 363.125
 PHOENIX DEP CON
 120.7 239.0

SW-4, 18 JUL 2019 to 15 AUG 2019

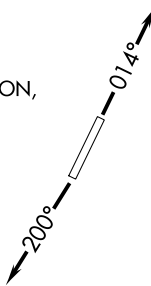
SW-4, 18 JUL 2019 to 15 AUG 2019

- NOTE: RNAV 1.
- NOTE: Turbojets and turboprops only.
- NOTE: RADAR required.
- NOTE: GPS required.
- NOTE: Aircraft filing over EED, HEC, or PMD, use JKPOT TRANSITION, all others use SISIE TRANSITION.
- NOTE: Aircraft departing KGEU and KGYR ATC assigned only.

TAKEOFF MINIMUMS

Rwys 1, 19: Standard.

NOTE: Chart not to scale.



DEPARTURE ROUTE DESCRIPTION

TAKEOFF RUNWAY 1: Climb heading 014° or as assigned by ATC, thence. . . .

TAKEOFF RUNWAY 19: Climb heading 200° or as assigned by ATC, thence. . . .

. . . .expect RADAR vectors to ZEPER, then on track 308° to MAYSA, then on (transition).
Maintain ATC assigned altitude, expect filed altitude 3 minutes after departure.

JKPOT TRANSITION (MAYSA6.JKPOT)

SISIE TRANSITION (MAYSA6.SISIE)

MAYSA SIX DEPARTURE (RNAV)

(MAYSA6.MAYSA) 24MAY18

GLENDALE, ARIZONA
GLENDALE MUNI (G^EU)