

LALUZ SIX DEPARTURE (RNAV)

AL-6915 (FAA)

GLENDALE MUNI (G^ETU)
GLENDALE, ARIZONA

SW-4, 18 JUL 2019 to 15 AUG 2019

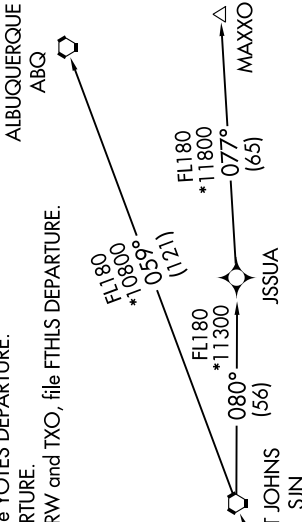
- ATIS 119.425
- GND CON 118.0
- GLENDALE TOWER * 121.0
- LUKE DEP CON * 118.15 363.125
- PHOENIX DEP CON 120.7 239.0

NOTE: RNAV 1.

- NOTE: Turbojets and turboprops only.
- NOTE: RADAR required.
- NOTE: GPS required.
- NOTE: SJN TRANSITION for ABQ terminal arrivals only.
- NOTE: MAXXO TRANSITION ATC assigned only.
- NOTE: Aircraft filing over DEN, RSK, ALS, and points north of ALS, file YOTES DEPARTURE.
- NOTE: Aircraft filing over ABQ, CIM, FTI, and GCK, file LALUZ DEPARTURE.
- NOTE: Aircraft filing over ACH, IBL, ONM, CNX, PNH, MMB, TCC, IRW, and TXO, file FTHLS DEPARTURE.
- NOTE: Aircraft departing KGEU and KGYR ATC assigned only.

TAKEOFF MINIMUMS
Rwys 1, 19: Standard.

TOP ALTITUDE: ASSIGNED BY ATC



ALBUQUERQUE
ABQ

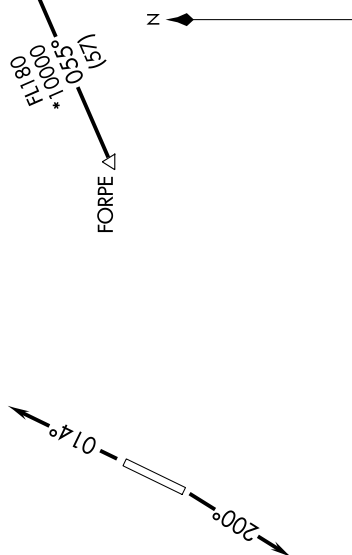
DEPARTURE ROUTE DESCRIPTION

- ▼ TAKEOFF RUNWAY 1: Climb heading 014° or as assigned by ATC, thence
- ▼ TAKEOFF RUNWAY 19: Climb heading 200° or as assigned by ATC, thence

. . . . expect RADAR vectors to FORPE, then on track 055° to LALUZ, then on (transition). Maintain ATC assigned altitude, expect filed altitude 3 minutes after departure.

- ALBUQUERQUE TRANSITION (LALUZ6.ABQ)
- MAXXO TRANSITION (LALUZ6.MAXXO)
- ST JOHNS TRANSITION (LALUZ6.SJN)

NOTE: Chart not to scale.



LALUZ SIX DEPARTURE (RNAV)

SW-4, 18 JUL 2019 to 15 AUG 2019