

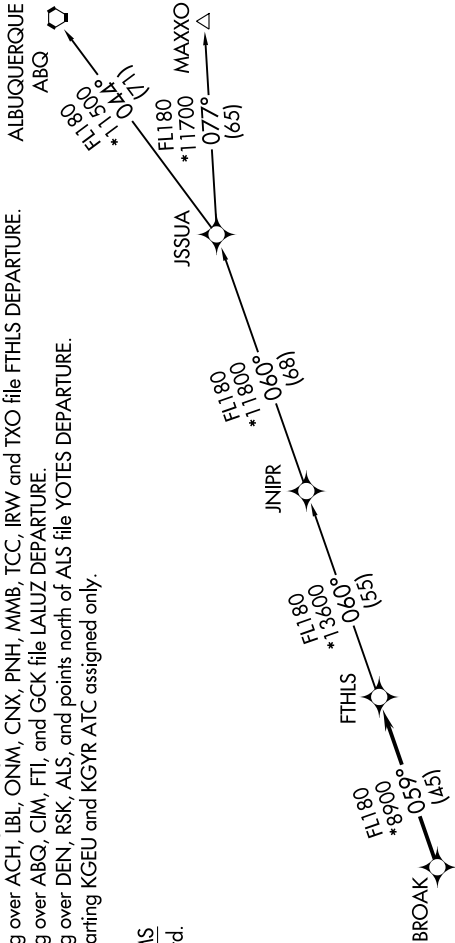
SW-4, 18 JUL 2019 to 15 AUG 2019

ATIS 119.425  
GND CON 118.0  
GLENDALE TOWER\* 121.0  
LUKE DEP CON \* 118.15 363.125  
PHOENIX DEP CON 120.7 239.0

NOTE: RNAV 1.  
NOTE: Turbojets and turboprops only.  
NOTE: RADAR required.  
NOTE: GPS required.  
NOTE: ABQ transition ATC assigned only.  
NOTE: Aircraft filing over ACH, LBL, ONM, CNX, PNH, MMB, TCC, IRW and TXO file FTHLS DEPARTURE.  
NOTE: Aircraft filing over ABQ, CIM, FTI, and GCK file LALUZ DEPARTURE.  
NOTE: Aircraft filing over DEN, RSK, ALS, and points north of ALS file YOTES DEPARTURE.  
NOTE: Aircraft departing KGEU and KGYR ATC assigned only.

TAKEOFF MINIMUMS  
Rwys 1, 19: Standard.

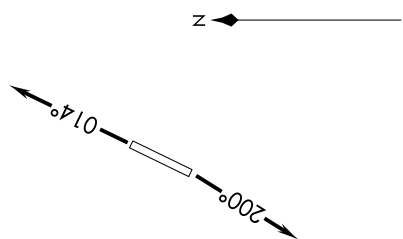
TOP ALTITUDE:  
ASSIGNED BY ATC



DEPARTURE ROUTE DESCRIPTION

TAKEOFF RUNWAY 1: Climb heading 014° or as assigned by ATC, thence. . . .  
 TAKEOFF RUNWAY 19: Climb heading 200° or as assigned by ATC, thence. . . .  
 . . . expect RADAR vectors to BROAK, then on track 059° to FTHLS, then on (transition).  
 Maintain ATC assigned altitude, expect filed altitude 3 minutes after departure.

ALBUQUERQUE TRANSITION (FTHLS6.ABQ)  
 JNIPR TRANSITION (FTHLS6.JNIPR)  
 MAXXO TRANSITION (FTHLS6.MAXXO)



NOTE: Chart not to scale.

SW-4, 18 JUL 2019 to 15 AUG 2019