

APP CRS	Rwy Idg	<b>8600</b>
<b>078°</b>	TDZE	<b>243</b>
	Apt Elev	<b>271</b>

# RNAV (GPS) RWY 8

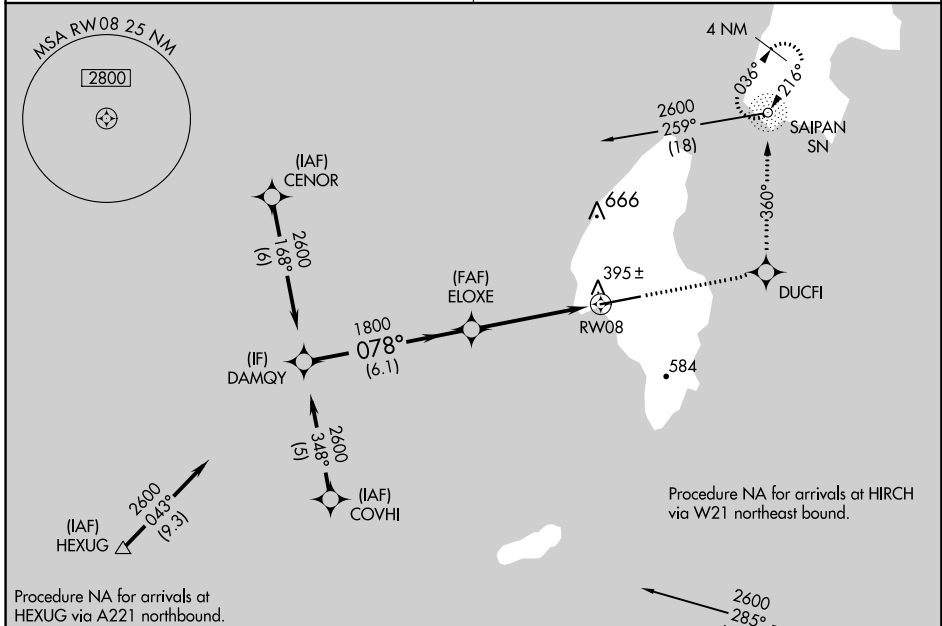
TINIAN INTL (TNI)(PGWT)

**▼** DME/DME RNP-0.3 NA. Obtain local altimeter setting on CTAF;  
**▲** when not received, use Saipan altimeter setting.  
 VDP NA when using Saipan altimeter setting.

**MISSED APPROACH:** Climb to 2800 direct DUCFI and via 360° track to SN NDB and hold, continue climb-in-hold to 2800.

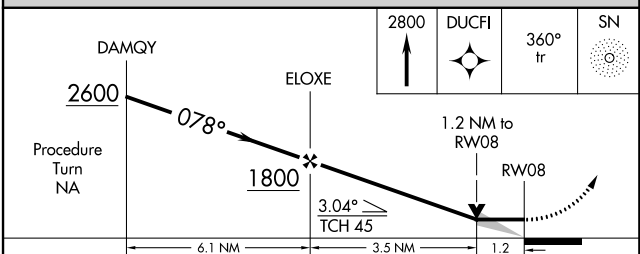
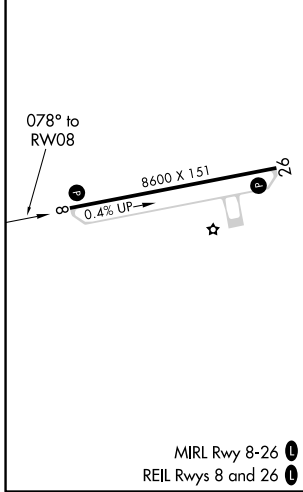
GUAM APP CON  
**118.4 290.5**

SAIPAN RADIO  
**123.6 (CTAF) 0**



Procedure NA for arrivals at HEXUG via A221 northbound.

ELEV 271	<b>D</b>	TDZE 243
----------	----------	----------



CATEGORY	A	B	C	D
LNAV MDA	660-1	417 (400-1)	660-1½	417 (400-1½)
CIRCLING	760-1	489 (500-1)	800-1½	960-2½
			529 (600-1½)	689 (700-2½)
<b>SAIPAN ALTIMETER SETTING MINIMUMS</b>				
LNAV MDA	680-1	437 (500-1)	680-1½	680-1½
			437 (500-1½)	437 (500-1½)
CIRCLING	800-1	529 (600-1)	840-1½	1000-2½
			569 (600-1½)	729 (800-2½)

PAC, 20 JUN 2019 to 15 AUG 2019

PAC, 20 JUN 2019 to 15 AUG 2019