

VORTAC MGM <b>112.1</b> Chan <b>58</b>	APP CRS <b>140°</b>	Rwy Idg TDZE Apt Elev	<b>N/A</b> <b>N/A</b> <b>225</b>
--	------------------------	-----------------------------	--

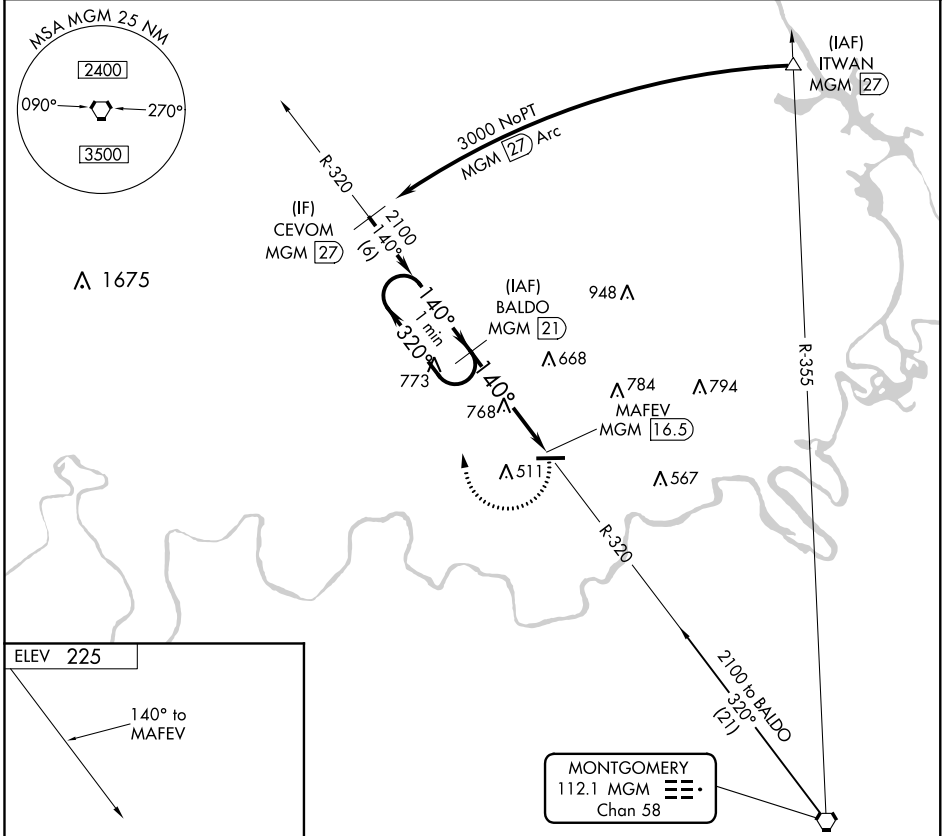
# VOR/DME-A

PRATTVILLE-GROUBY FIELD (1A9)

**⚠** Use Montgomery altimeter setting; if not received, use Alexander City altimeter setting and increase all MDAs 140 feet. Night landing: **NA** Rwy 9 NA. Helicopter visibility reduction below 1 SM NA.

**MISSED APPROACH:** Climbing right turn to 2100 via MGM VORTAC R-320 to BALDO/21 DME and hold.

AWOS-3P <b>118.025</b>	MONTGOMERY APP CON ★ <b>121.2 269.05</b>	GCO <b>121.725</b>	UNICOM <b>122.8 (CTAF) ①</b>
---------------------------	---	-----------------------	---------------------------------



ELEV 225

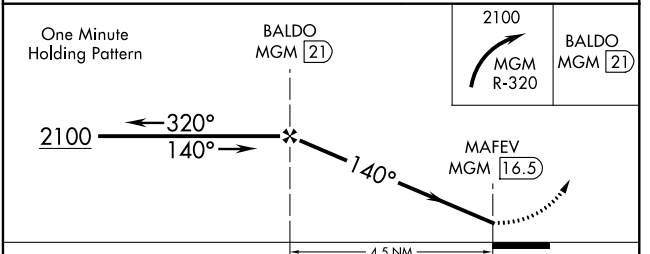
140° to MAFEV

5400 X 100

0.5% UP

MIRL Rwy 9-27 ①

REIL Rws 9 and 27 ①



CATEGORY	A	B	C	D
CIRCLING	1060-1 835 (900-1)	1060-1¼ 835 (900-1¼)	1060-2½ 835 (900-2½)	NA

SE-4, 18 JUL 2019 to 15 AUG 2019

SE-4, 18 JUL 2019 to 15 AUG 2019