

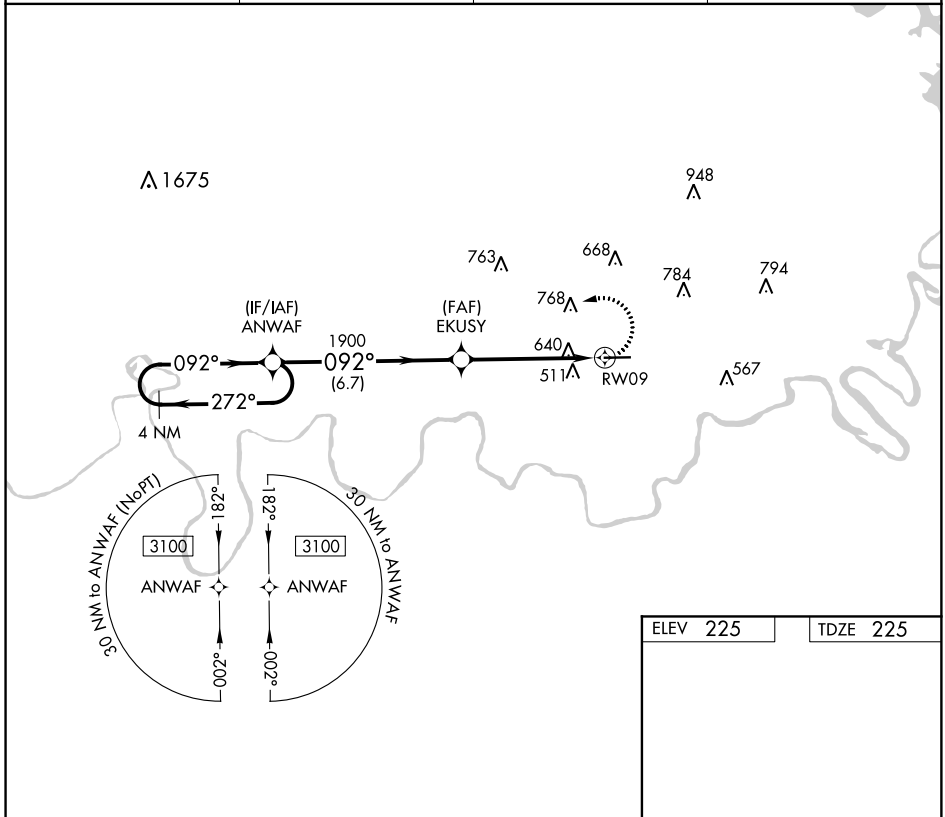
APP CRS	Rwy ldg	5400
092°	TDZE	225
	Apt Elev	225

RNAV (GPS) RWY 9

PRATTVILLE-GROUBY FIELD (1A9)

RNP APCH.		MISSED APPROACH: Climbing left turn to 3100 direct ANWAF and hold.
▽ Rwy 9 helicopter visibility reduction below 1 SM NA. When local altimeter setting not received, use Montgomery Rgnl (Dannelly Field) altimeter setting and increase all MDA 40 feet; increase LNAV Cats C/D visibility ½ SM. Straight-in Rwy 9 NA at night.		

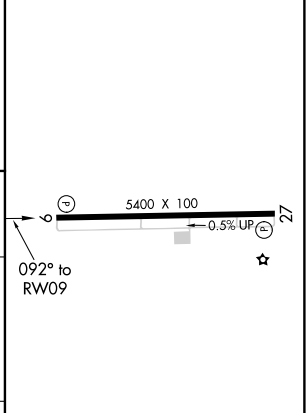
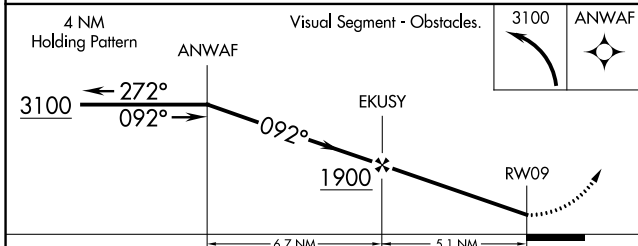
AWOS-3P 118.025	MONTGOMERY APP CON ★ 121.2 269.05	GCO 121.725	UNICOM 122.8 (CTAF) ①
---------------------------	---	-----------------------	---------------------------------



SE-4, 18 JUL 2019 to 15 AUG 2019

SE-4, 18 JUL 2019 to 15 AUG 2019

ELEV	225	TDZE	225
------	------------	------	------------



CATEGORY	A	B	C	D
LNAV MDA	980-1 755 (800-1)	980-1¼ 755 (800-1¼)	980-2	755 (800-2)

MIRL Rwy 9-27 ①
REIL Rwys 9 and 27 ①